

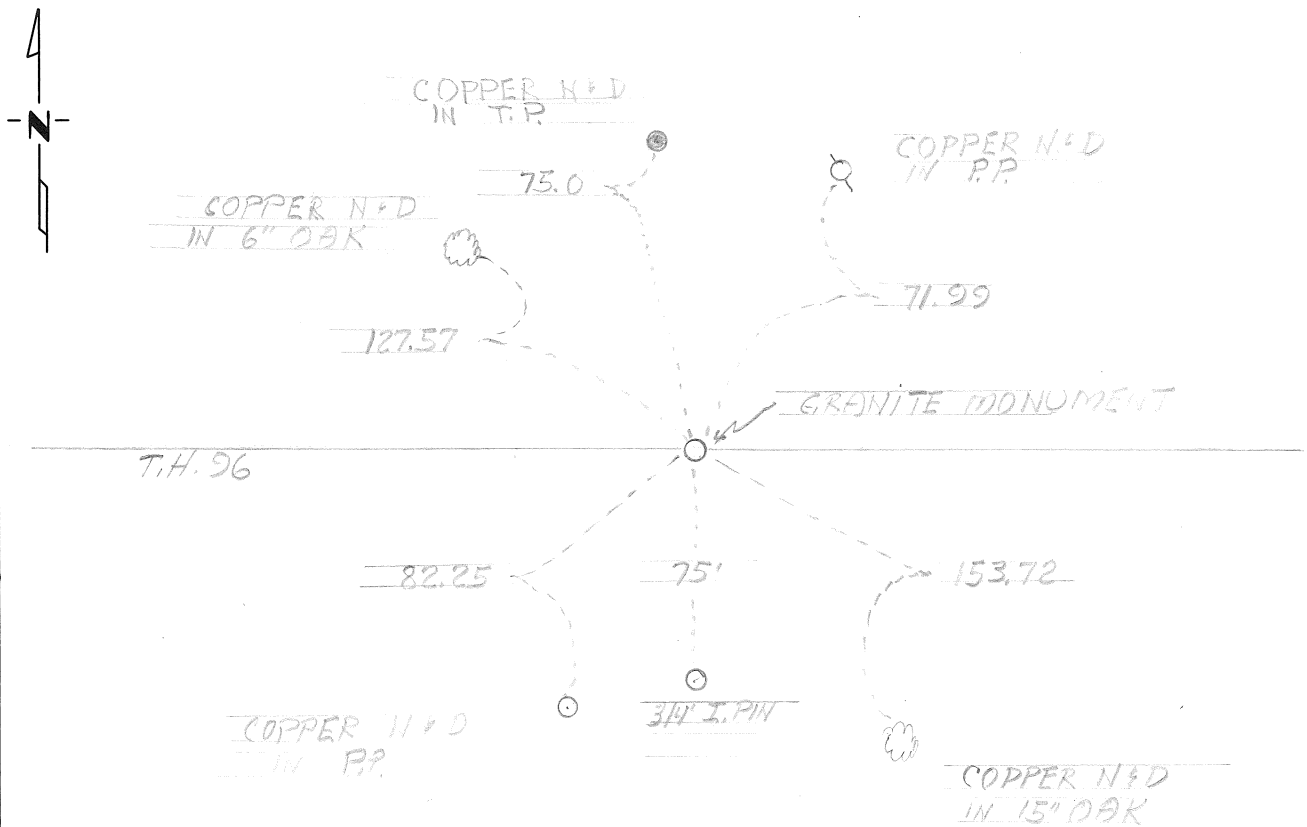
CERTIFICATE OF LOCATION OF GOVERNMENT CORNER

NORTH EAST Corner of Section 20, Township 30, Range 22, _____ P.M.
STATE OF MINNESOTA, County of RAMSEY

At the corner location shown on the sketch:

- On FEB 1967 found a GRANITE MONUMENT
DATE
- left monument as found, lowered monument, removed monument (explain)
- On _____ placed a _____
DATE

SKETCH OF REFERENCE TIES



Statement of evidence relative to this corner location is on back of page.

I hereby certify that this document and the data contained herein was prepared by me or under my direct supervision.

SIGNATURE DATE

Registration No. _____

- Land Surveyor, Professional Engineer
- County Surveyor, County Engineer

OFFICE OF THE REGISTER OF DEEDS

County of _____

I hereby certify that this document was filed in the Reg. of Deeds office at _____ .M. on the _____ day of _____ A.D., 19 _____

Register of Deeds _____

By _____, Deputy

DOCUMENT NO. _____

Statement of Evidence:

FEB 1967 T.H. 96 S.P. 6224-17 NOTES BY SHELDON FOX
FOUND A GRANITE MONUMENT 6" TO 8" BELOW BIT SURFACE.
THIS MONUMENT IS FLUSH WITH OLD CONCRETE PAVEMENT