

CERTIFICATE OF LOCATION OF GOVERNMENT CORNER

SW Corner to Section 18 Township 30 N. Range 22 W. No. 3

STATE OF MINNESOTA,

County of Ramsey S.S.

I hereby certify that on the 31st day of May 1962,

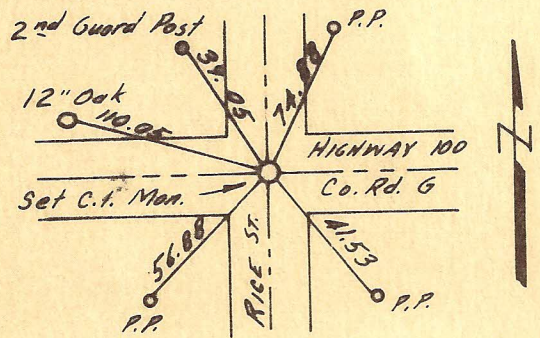
that I, Charles O. Georgi, a Registered Land Surveyor, ~~County Surveyor,~~
~~County Highway Engineer,~~ found the S.W. corner of Section 18, T30N, R22W.

which was evidenced by iron pipe set by old ties to Granite Monument
(5 to 6 feet deep by Carley Engig.) and I further certify that to perpetuate the

location of such corner I did, at the exact location thereof, place a permanent marker
 consisting of cast iron monument.

I further certify that I established 5 references or witness monuments consist-
 ing of ties to a tree, 3 power poles and a guard post which reference or witness monuments are

located in the manner following.



- NW 39.05 2nd Guard Post
- WNW 110.05 12" Oak Tree
- SW 56.88 Power Pole
- SE 41.53 Power Pole
- NNE 74.88 Power Pole

(C.I.M. flush with blacktop pave in center of intersection)

Dated at St. Paul, Minnesota, this 2nd day of August, 1962.

Charles O. Georgi
~~County Surveyor, County Highway Engineer,~~
 Registered Land Surveyor No. 3960

OFFICE OF THE REGISTER OF DEEDS

County of _____

I hereby certify that the within instrument was filed in this office for record on the
 _____ day of _____ A.D., 19____.

Register of Deeds
 By _____, Deputy