

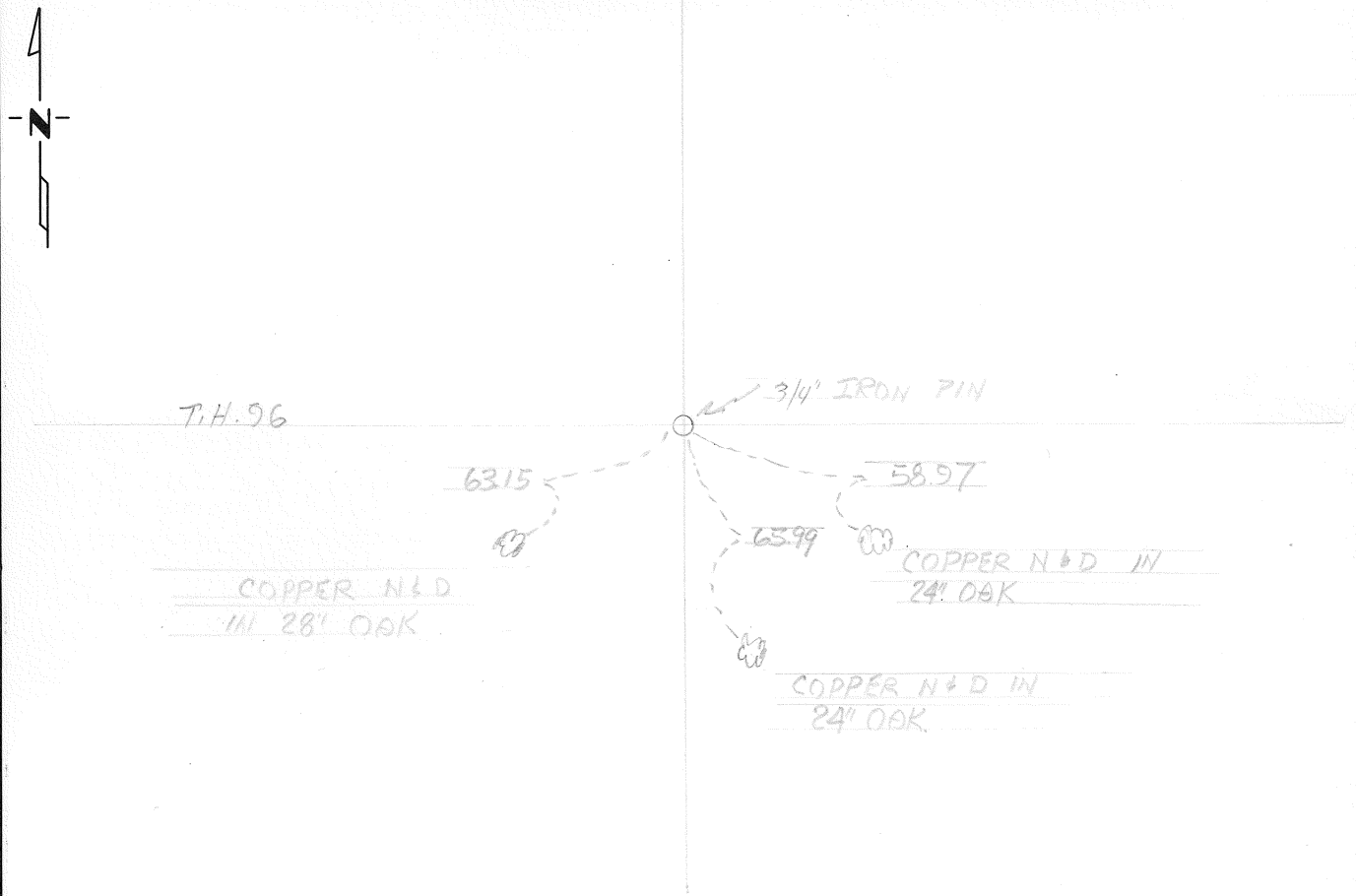
CERTIFICATE OF LOCATION OF GOVERNMENT CORNER

NORTH 1/4 Corner of Section 24, Township 30, Range 23, _____ P.M.
STATE OF MINNESOTA, County of RAMSEY

At the corner location shown on the sketch:

- On FEB 1967 found a 3/4" IRON PIN IN
DATE
- left monument as found, lowered monument, removed monument (explain)
- On _____ placed a _____
DATE

SKETCH OF REFERENCE TIES



Statement of evidence relative to this corner location is on back of page.

I hereby certify that this document and the data contained herein was prepared by me or under my direct supervision.

SIGNATURE DATE

Registration No. _____

- Land Surveyor, Professional Engineer
- County Surveyor, County Engineer

OFFICE OF THE REGISTER OF DEEDS

County of _____

I hereby certify that this document was filed in the Reg. of Deeds office at _____ .M. on the _____ day of _____ A.D., 19 _____

Register of Deeds _____

By _____, Deputy

DOCUMENT NO. _____

Statement of Evidence:

S.P. 6224-17 T.H. 96 NOTES BY SHELDON FOX FEB 1967
MONUMENT HAS BEEN REMOVED FOUND 3/4" PIN IN? ALSO ONE
33' SOUTH CHECKED OUT O.K.