

CERTIFICATE OF LOCATION OF GOVERNMENT CORNER

NORTH EAST Corner of Section 23, Township 30, Range 23, _____ P.M.

STATE OF MINNESOTA, County of RAMSEY

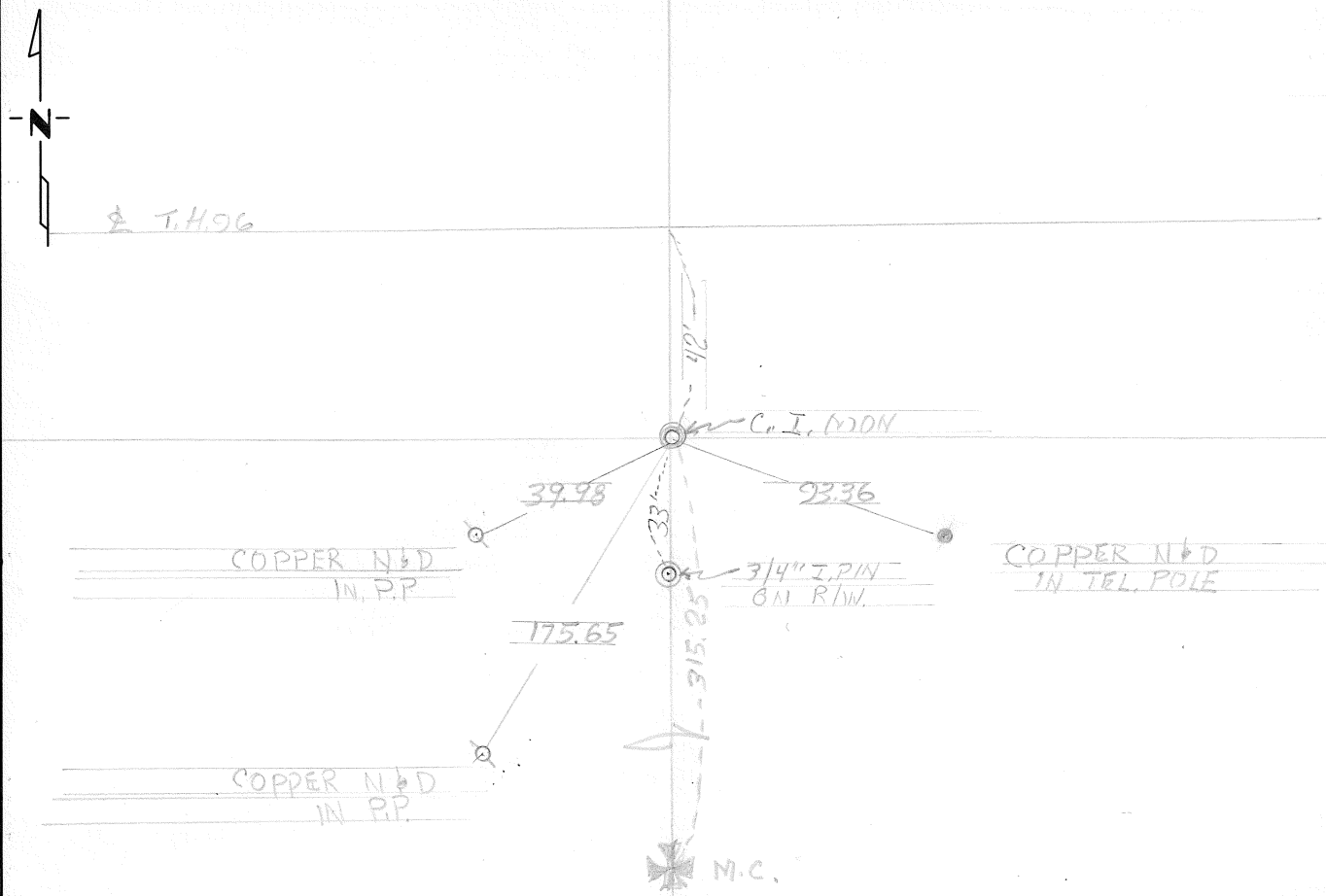
At the corner location shown on the sketch:

On 8-15-68 found a CAST IRON MON.
DATE

left monument as found, lowered monument, removed monument (explain)

On _____ placed a _____
DATE

SKETCH OF REFERENCE TIES



Statement of evidence relative to this corner location is on back of page.

I hereby certify that this document and the data contained herein was prepared by me or under my direct supervision.

SIGNATURE DATE

Registration No. _____

Land Surveyor, Professional Engineer

County Surveyor, County Engineer

OFFICE OF THE REGISTER OF DEEDS

County of _____

I hereby certify that this document was filed in the Reg. of Deeds office at _____ .M. on the _____ day of _____ A.D., 19 _____

Register of Deeds _____

By _____, Deputy

DOCUMENT NO. _____

Statement of Evidence:

FEB 1967 S.P 6224-17 T.H. 96 S, FOX & CREW FOUND GRANITE
PION INPLACE & ON AUG 15-1968 WE FOUND THAT THIS HAD BEEN
REPLACED WITH A RAMSKY CO. CAST IRON PION.