

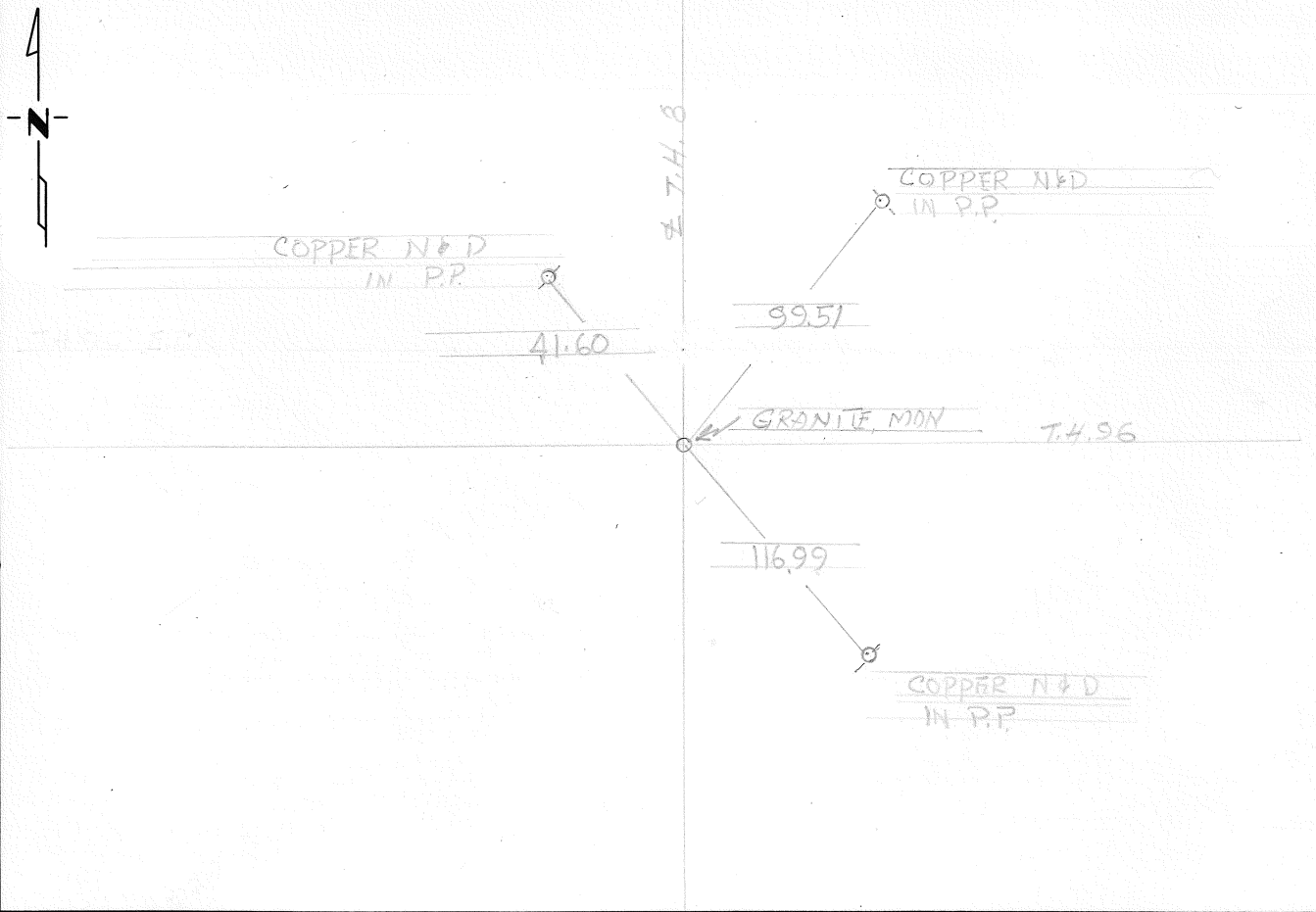
CERTIFICATE OF LOCATION OF GOVERNMENT CORNER

NORTH EAST Corner of Section 20, Township 30, Range 23, _____ P.M.
STATE OF MINNESOTA, County of RAMSEY

At the corner location shown on the sketch:

- On FEB 1967 found a GRANITE MON.
DATE
- left monument as found, lowered monument, removed monument (explain)
- On _____ placed a _____
DATE

SKETCH OF REFERENCE TIES



Statement of evidence relative to this corner location is on back of page.

I hereby certify that this document and the data contained herein was prepared by me or under my direct supervision.

SIGNATURE DATE

Registration No. _____

- Land Surveyor, Professional Engineer
- County Surveyor, County Engineer

OFFICE OF THE REGISTER OF DEEDS
County of _____

I hereby certify that this document was filed in the Reg. of Deeds office at _____ .M. on the _____ day of _____ A.D., 19 ____

Register of Deeds _____

By _____, Deputy

DOCUMENT NO. _____

1. To 2' below 87
2/18/67

Statement of Evidence:

FEB 1967 S.P. 6224-17 T.H. 96 S. FOX & CREW FOUND GRANITE ON
FLUSH WITH OLD CONC. PAVEMENT ON T.H. 8. THIS IS OVERLAIN WITH
APPROX 2" OF BIT. T.H. 3 P.L. 212+84.6 = 212+86.0 = T.H. 96 10+00