

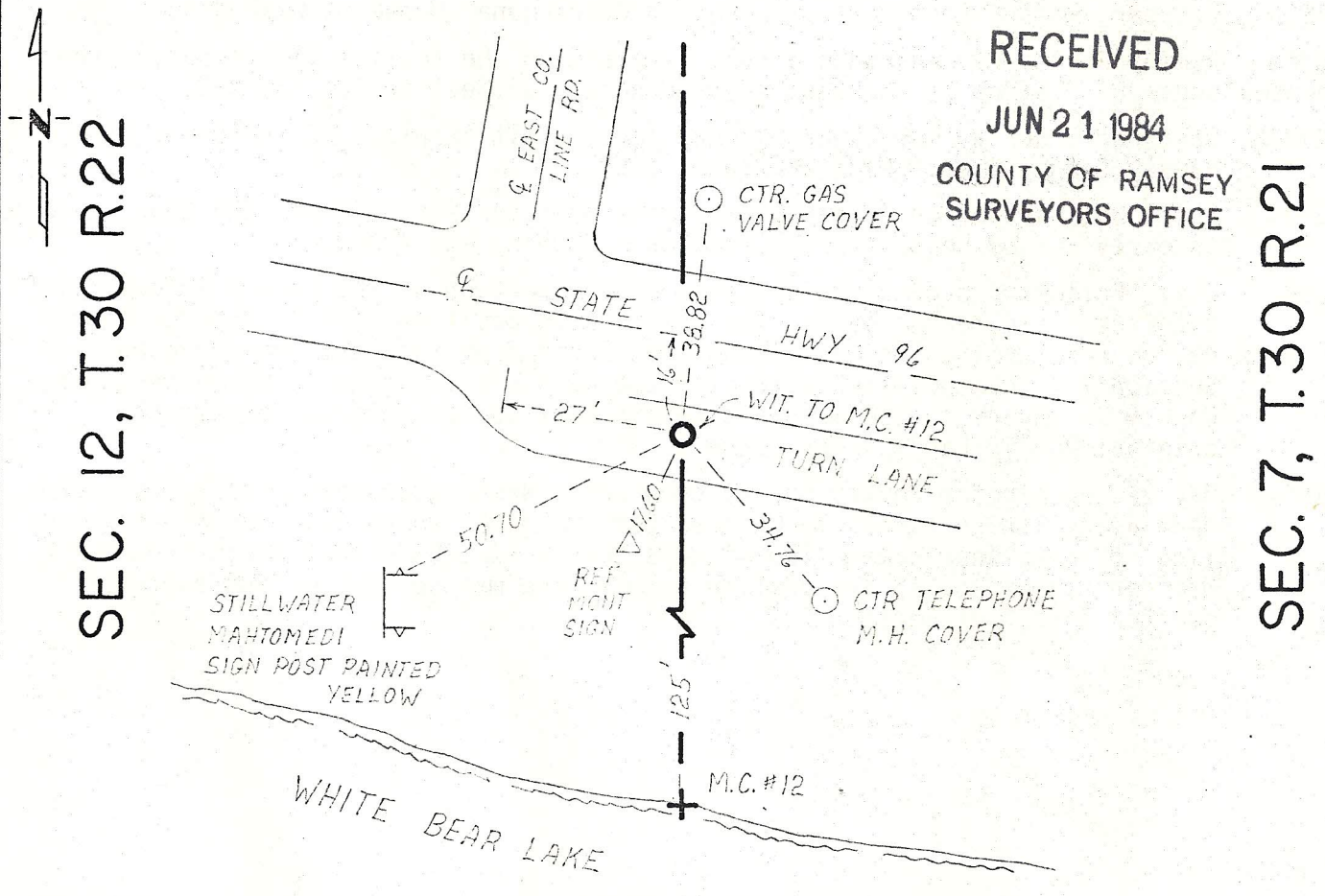
CERTIFICATE OF LOCATION OF GOVERNMENT CORNER

Meander Corner No. 12 ~~XXXX~~ of Section 7, Township 30, Range 21, 4th P.M.
STATE OF MINNESOTA, County of Washington

At the corner location shown on the sketch:

- On _____ found a _____
DATE
- left monument as found, lowered monument, removed monument (explain)
- On May 31, 1984 placed a Washington County cast iron monument as a WITNESS
DATE corner to Meander Corner No. 12, top flush with bituminous surface.

SKETCH OF REFERENCE TIES



RECEIVED
JUN 21 1984
COUNTY OF RAMSEY
SURVEYORS OFFICE

SEC. 12, T.30 R.22

SEC. 7, T.30 R.21

Statement of evidence relative to this corner location is on back of page.

I hereby certify that this document and the data contained herein was prepared by me or under my direct supervision.

Lawrence A. Nybeck 6-12-84
SIGNATURE DATE

Registration No. 12279
 Land Surveyor, Professional Engineer
 County Surveyor, County Engineer

OFFICE OF THE REGISTER OF DEEDS
County of _____

I hereby certify that this document was filed in the Reg. of Deeds office at _____ .M. on the _____ day of _____ A.D., 19 _____

Register of Deeds _____
By _____, Deputy
DOCUMENT NO. _____

Statement of Evidence: Meander Corner No. 12, common to Section 7, T30 R21 and Section 12, T30 R22.

- 1847 October 19, James M. Marsh, Deputy Surveyor for original U.S. Public Land Survey, set meander post and recorded a White Oak, 15 inches in diameter, for the meander post. One bearing tree:
White Oak 12" N 21° W 55 links
- 1882 September 24, plat of Dellwood, surveyed by Simar & Morton, Civil Engineers, was filed for record. West line of this plat is the section line between Sections 7 & 12 but the meander corner is not shown.
- 1897 October 7, Ramsey County Records state: "Meander Corner No. 1" (identified as Meander Corner No. 12 in Washington County) "was fixed from one Government stump. Set Monument."
- 1925 Ramsey County Engineer Road Project No. 25-51 plans show the road centerline (Sta 268+32.38) crosses the section line at a point 1393.1 feet south of the east quarter corner of Section 12. Meander corner is not shown.
- 1939 October, Ramsey County records note M.C. #1 gone; Monument washed out.
date Ramsey County records show a bolt in place on the section line 1,339.91 feet
unknown south of a stone at the east quarter corner of Section 12, T30 R22.
- 1973 Washington County survey crew found 1 inch bolt in place as indicated from Ramsey County ties. Made reference ties.
- 1984 April 25, Washington County survey crew searched for M.C. #12 and ties as noted on early Ramsey County survey records. Nothing was found.
- 1984 May, Following a complete analysis and comparison of the record information with the field measurements, the obliterated position of this meander corner has been determined to be 1539.98 feet south from the west quarter corner of Section 7. This position maintains the corner's location as found by Ramsey County Surveyors to the monument set in 1897 to mark and perpetuate the original Public Land Survey Corner.
- 1984 May 31, Washington County survey crew set a Washington County cast iron monument as a witness corner to Meander Corner No. 12 which falls on the shoreline of White Bear Lake. The witness corner is 125.00 feet north from Meander Corner No. 12 and on line between the meander corner and the west quarter corner of Section 7.