

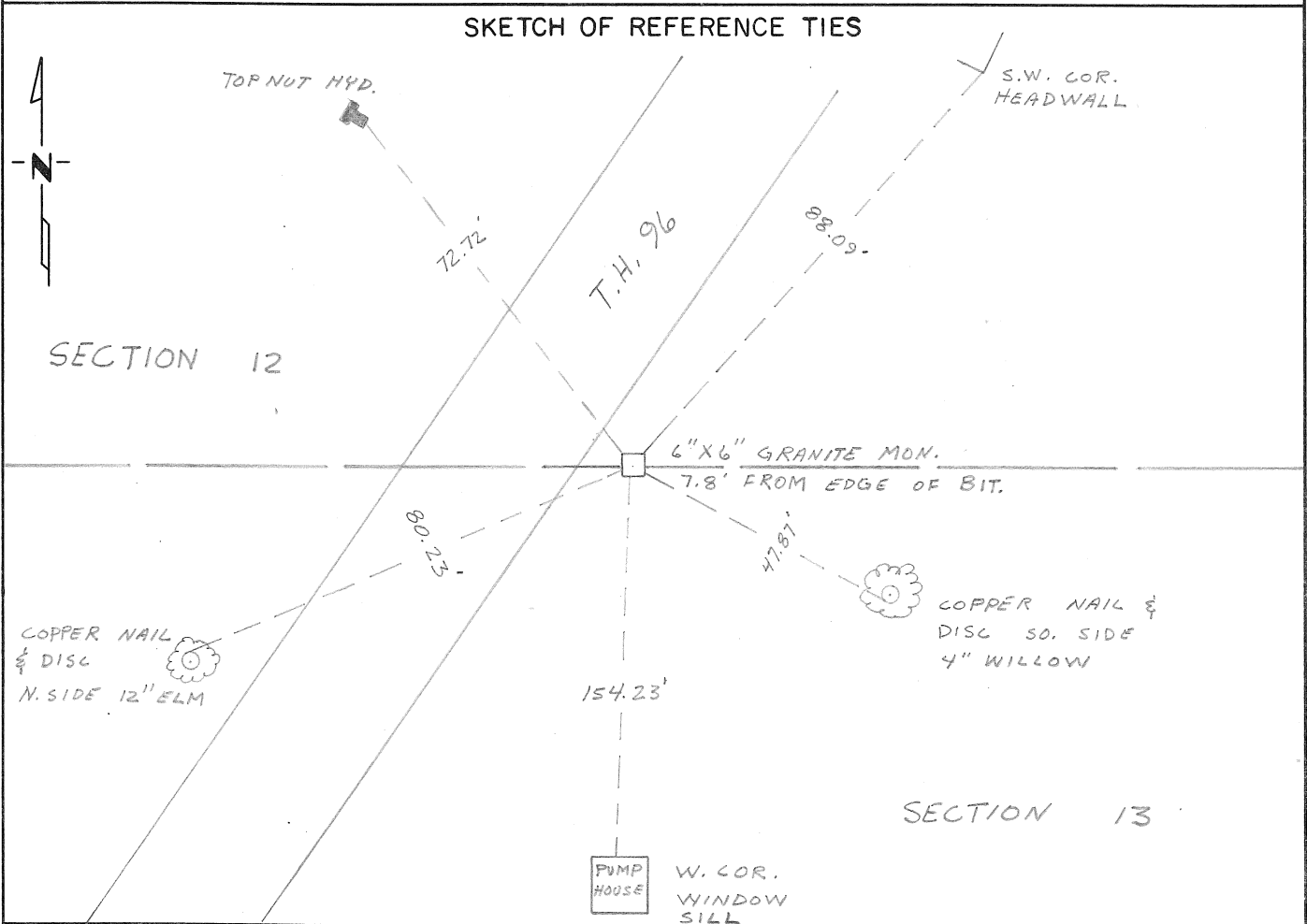
CERTIFICATE OF LOCATION OF GOVERNMENT CORNER

North Line Meander Corner of Section 13, Township 30 N, Range 22 W, _____ P.M.

STATE OF MINNESOTA, County of Ramsey

At the corner location shown on the sketch:

- On 9-26-75 found a 6"x6" Granite Mon
DATE
- left monument as found, lowered monument, removed monument (explain)
- On _____ placed a _____
DATE



Statement of evidence relative to this corner location is on back of page.

I hereby certify that this document and the data contained herein was prepared by me or under my direct supervision.

SIGNATURE DATE

Registration No. _____

- Land Surveyor, Professional Engineer
- County Surveyor, County Engineer

OFFICE OF THE REGISTER OF DEEDS

County of _____

I hereby certify that this document was filed in the Reg. of Deeds office at _____ .M. on the _____ day of _____ A.D., 19 _____

Register of Deeds _____

By _____, Deputy

DOCUMENT NO. _____

Statement of Evidence: S.P. 6225 T.H. 96 WHITE BEAR LAKE

RECEIVED REFERENCE TIES FROM RON MEYER, RAMSEY CO.

⁷⁵
9-26-78

BERNIE LANG, MINNESOTA HIWAY DEPT, FOUND MONUMENT
AND CHECKED TIES AS O.K. PROJECT COORDINATES WERE
ESTABLISHED AND ARE ON FILE IN DISTRICT 9 SURVEYS
OFFICE, MINNESOTA HIWAY DEPT.