

W 1/4 Corner Sec. 6-30-23

539.05 Notes
538.62 M

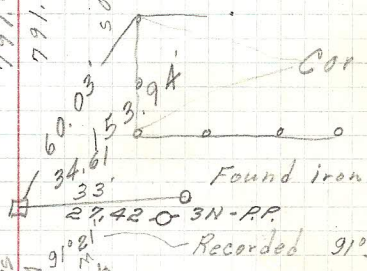
791.93 Notes
791.58 M

50.43

3N ♀
PP ♀

57.26
57.21

P. K. Nail



1698.67 Notes
1697.73 Notes

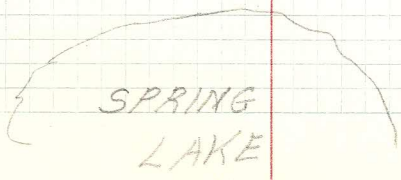
1323.56 M

374.94 Notes
374.81 M
50.13

91°35'
7.81
Long 0.95
Short 0.17

Short 0.30

MC



SPRING LAKE

X