

CERTIFICATE OF LOCATION OF GOVERNMENT CORNER

MON. NO. _____
old index 15218

East prop. line Raymond & West prop. line Long Ave.

Corner of Section _____ Township _____ Range _____ P.M.

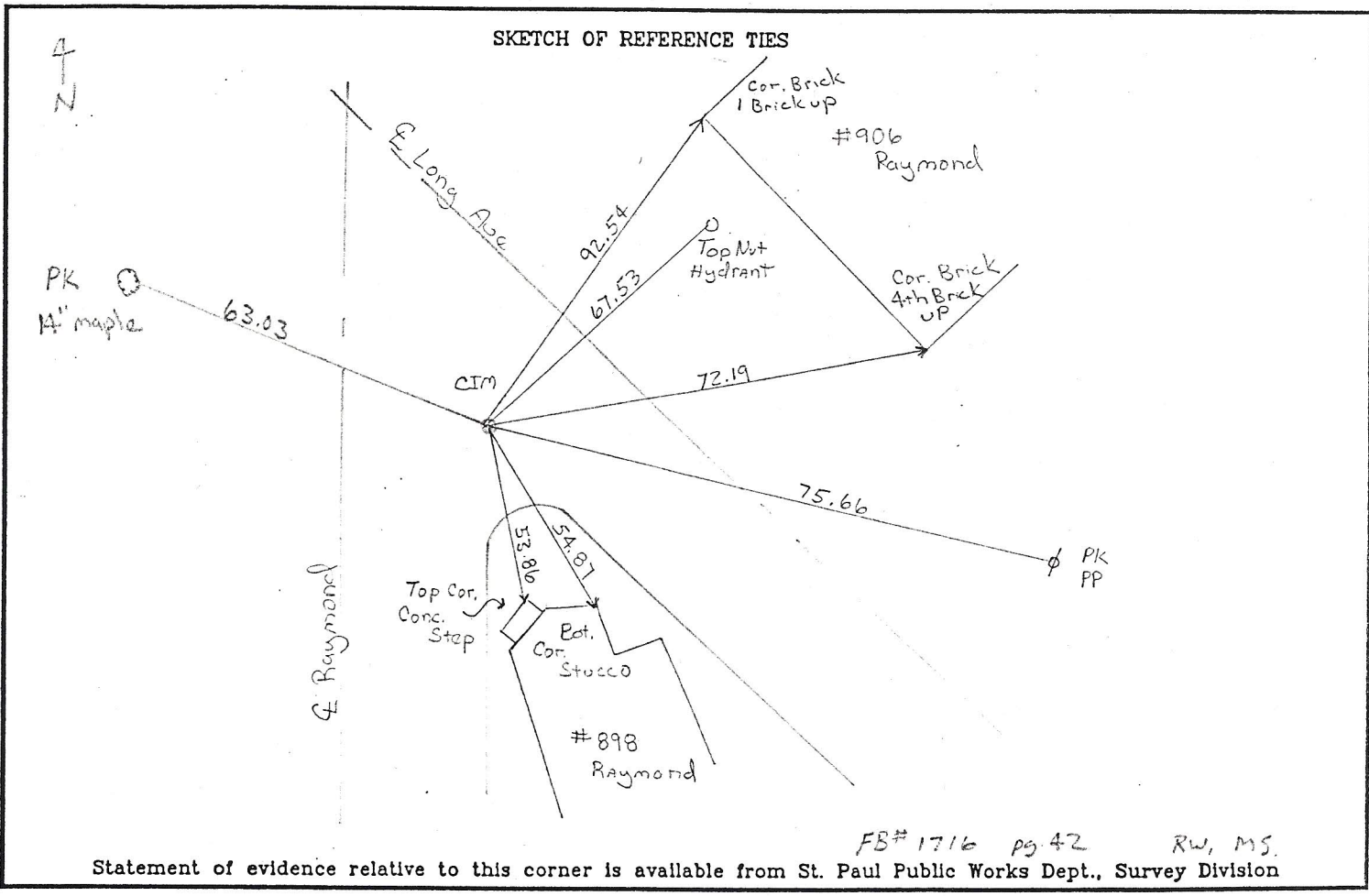
STATE OF MINNESOTA, County of Ramsey

At the corner location shown on the sketch:

On 6-18-97 found a granite monument - removed for
storm sewer construction

- left monument as found lowered monument removed monument (explain)

On 6-30-97 placed a cim in concrete base



FB# 1716 pg 42 RW, MS.

Statement of evidence relative to this corner is available from St. Paul Public Works Dept., Survey Division

I hereby certify that this document and the data contained herein was prepared by me or under my direct supervision.

[Signature] 06/10/97
SIGNATURE DATE

Registration No. 13298

Land Surveyor County Surveyor

Professional Engineer

Chief Surveyor, City of St. Paul

Office of The County Recorder, County of Ramsey

I hereby certify that this document was filed in the county

Recorders office at _____ m. on the _____ day of _____

County Recorder _____

By _____, Deputy

DOCUMENT NUMBER _____