

CERTIFICATE OF LOCATION OF GOVERNMENT CORNER

MON. NO. _____

old INDEX 1998

@ Ottawa - between Baker & King
 _____ Corner of Section _____ Township _____ Range _____ P.M.

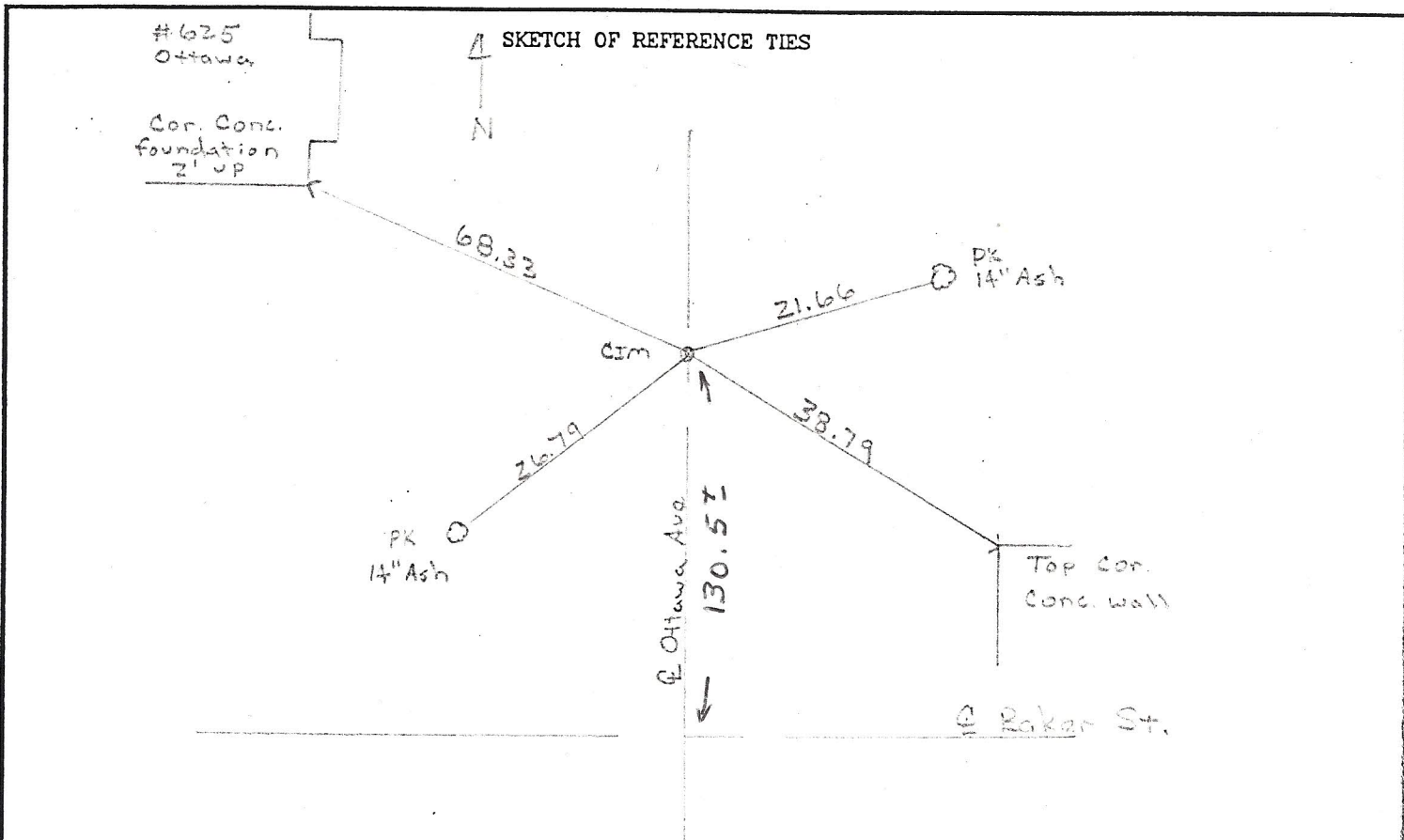
STATE OF MINNESOTA, County of Ramsey

At the corner location shown on the sketch:

On 5-2-97 found a Granite Monument @ Grade - removed
date
for street construction

- left monument as found
 lowered monument
 removed monument (explain)

On 9-11-97 placed a CIM in concrete @ finish grade
date



Statement of evidence relative to this corner is available from St. Paul Public Works Dept., Survey Division FS # 1716 pg 37 RW MS

I hereby certify that this document and the data contained herein was prepared by me or under my direct supervision.

OCT 10, 1997
SIGNATURE DATE

- Registration No. 13298
- Land Surveyor
 County Surveyor
 Professional Engineer
 Chief Surveyor, City of St. Paul

Office of The County Recorder, County of Ramsey

I hereby certify that this document was filed in the county

Recorders office at _____ m. on the _____ day of _____

County Recorder _____

By _____, Deputy

DOCUMENT NUMBER _____