

CERTIFICATE OF LOCATION OF GOVERNMENT CORNER

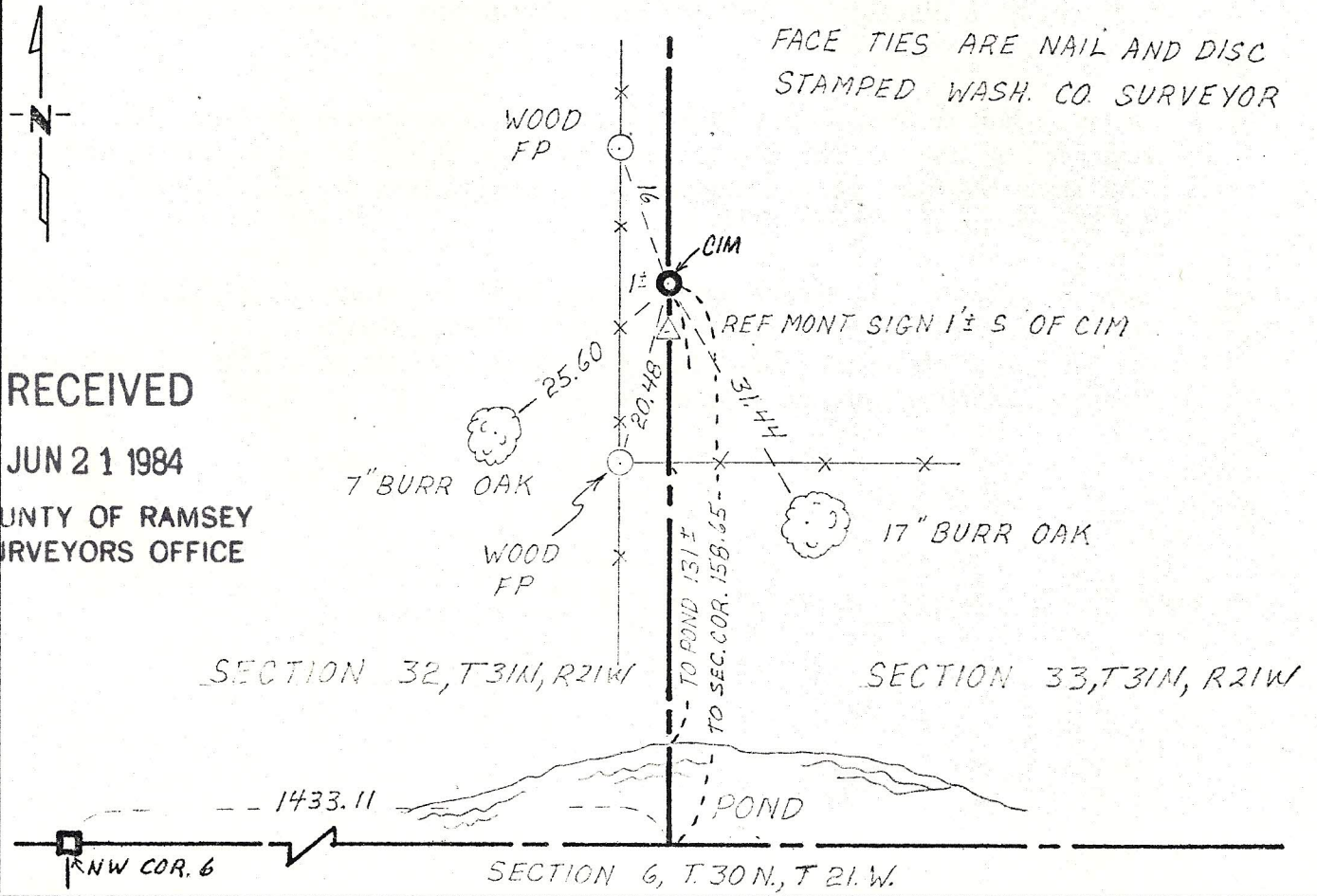
Witness to SE _____ Corner of Section 32, Township 31, Range 21, 4th P.M.

STATE OF MINNESOTA, County of Washington

At the corner location shown on the sketch:

- On 6-14-1978 found a 3/4" iron pipe RLS 6617
DATE
- left monument as found, lowered monument, removed monument (explain)
- On 6-14-1978 placed a Wash. Co. cast iron monument over 3/4" iron pipe.
DATE

SKETCH OF REFERENCE TIES



RECEIVED
JUN 21 1984

COUNTY OF RAMSEY
SURVEYORS OFFICE

Statement of evidence relative to this corner location is on back of page.

I hereby certify that this document and the data contained herein was prepared by me or under my direct supervision.

Paul A. Johnson 8/28/78
SIGNATURE DATE

Registration No. 10938

Land Surveyor, Professional Engineer
 County Surveyor, County Engineer

OFFICE OF THE REGISTER OF DEEDS
County of _____

I hereby certify that this document was filed in the Reg. of Deeds office at _____ .M. on the _____ day of _____ A.D., 19 _____

Register of Deeds _____
By _____, Deputy

DOCUMENT NO. _____

Statement of Evidence:

Section corner common to Sections 32 & 33, T31 R21.

- 1847 Original government surveyors set a post at Sec. cor. and recorded one bearing tree:
W. Oak 18" N 89° E 8.10 ch.
- 1883 October 1 & 2, Myron Shepard in Survey No. 25, Book 1, page 52, states:
"Stump of U.S. Wit. tree standing. Set a stake 1.00 north of true corner.
Cor. in Lake."
- 1968 January, J.R. Hoffman, RLS 1979, Cert. of Survey of the E½ of the SW¼
Sec. 33, for Bald Eagle Sportsman's Assn. shows symbol ° (iron) in place on
section line a distance of 286.93 feet north of the SW corner which is in a
pond.
- 1973 January, Hult & Associates, RLS 6617, survey worksheet for Sec. 32,
T31 R21, states: "SE Corner. Sec. 32, set on line of occupation to north
(Old fence line) and on line between S¼ corner of Section 32, T31 R21 and
the N¼ corner of Sec. 6, T30 R21."
- 1978 June 14, Wash. Co. survey crew lowered 3/4" iron pipe (RLS 6617) and set
Wash. Co. cast iron monument over it as a Witness Corner to
the SE corner of Section 32. SE corner falls in small pond 158.65 feet south
along section line from the CIM witness cor.