

CERTIFICATE OF LOCATION OF GOVERNMENT CORNER

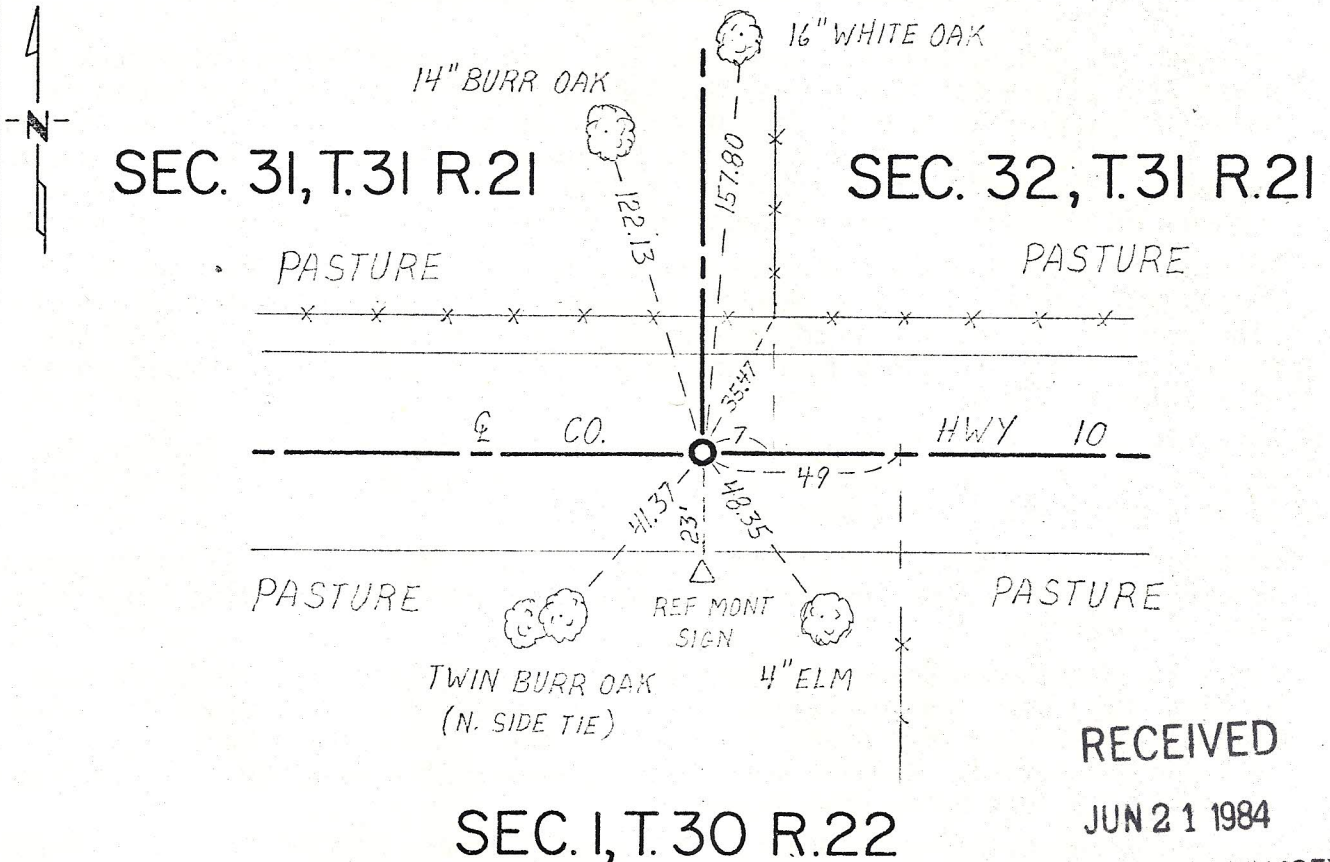
Southeast Corner of Section 31, Township 31, Range 21, 4th P.M.

STATE OF MINNESOTA, County of Washington

At the corner location shown on the sketch:

- On Apr. 21, 1971 found a Stone.
DATE
- left monument as found, lowered monument, removed monument (explain)
- On Apr. 21, 1971 placed a Washington County cast iron monument in exact
DATE place of stone removed this date.

SKETCH OF REFERENCE TIES



RECEIVED

JUN 21 1984

COUNTY OF RAMSEY
SURVEYORS OFFICE

SEC. 1, T. 30 R. 22

FACE TIES HAVE NAIL AND DISC STAMPED RLS 5333

Statement of evidence relative to this corner location is on back of page.

I hereby certify that this document and the data contained herein was prepared by me or under my direct supervision.

Laurence A. Nybeck 5-31-84
SIGNATURE DATE

Registration No. 12279

- Land Surveyor, Professional Engineer
- County Surveyor, County Engineer

OFFICE OF THE REGISTER OF DEEDS

County of _____

I hereby certify that this document was filed in the Reg. of Deeds office at _____ .M. on the _____ day of _____ A.D., 19 _____

Register of Deeds _____

By _____, Deputy

DOCUMENT NO. _____

Statement of Evidence: Section corner common to Sections 31 & 32, T31 R21.

- 1847 August 10-16, H.A. Wiltse, Deputy Surveyor, original U.S. Public Land Survey, ran the Third Correction Line. Set a post at this section corner and recorded two bearing trees:
Aspen 12" N 38° E 178 links
Burr Oak 8" N 33° W 235 links
- 1874 Northern Pacific Railway Co. R/W map shows the railroad centerline crosses the south line of Section 31 at a point 1035.7 feet west of the southeast corner.
- 1883 October 1 & 2, Myron Shepard in Survey No. 25, Book 1, page 52, records U.S. Burr Oak N 33° W 235 standing with marks very dim. Aspen gone. His sketch shows symbol ◦ at this corner.
- 1894 December 14-18, County Surveyor J.M. Oldham in Survey No. 160, Book 1, page 118, and fieldbook 1, page 102, states: "At this point I find stump of Br. Oak N 33° W 235 which Frank Hauble being duly sworn identifies as the stump on which Myron Shepard (Co. Surveyor) found letters and figures and accepted as the U.S. B.T." His sketch shows symbol • at this corner.
- 1906 December 20, J.M. Oldham in Survey No. 279, Book 1, page 163 and fieldbook 1, pages 71 & 72 states: "See survey No. 160; Mr. Hauble assisted in finding remains of stump of Govt. Burr Oak N 33° W 2.35 (ch.); I accept this as the true B.T. it having been shown to me by Mr. Hauble Dec. 14, 1894 and to Mr. Shepard in 1883." His sketch shows symbol ■ at the corner. He crossed railroad at a point 15.60½ chains (1029.93 feet) west of the southeast corner of Section 31.
- 1909 November, County Surveyor Lewis W. Clarke, in his survey of State Road No. 5 (now Hwy 61) shows Co. Stone Mon. at this corner and notes the highway centerline crosses the south line of Section 31 at a point 1118.5 feet west of the southeast corner and 286.8 feet east of a Granite Mon. at the northeast corner of Section 2, T30 R22.
- 1914 July, Minnesota State Highway Engineer's cross-section worksheet for Hwy. No. 15 (now Hwy. 61) shows the highway centerline crosses the south line of Section 31 at a point 1131.6 feet west of this corner.
- 1956 Minnesota State Highway Department R/W map for S.P. 8207 (T.H. 61) shows granite monument in place. (Hwy. centerline crosses section line at a point 945.7 feet west of corner)
- 1971 April 21, Washington County Surveyor Donn E. Pepper-RLS 5333 (with D. Mattson of Minn. Hwy. Dept. and employees of Hult Surveying, Inc. observing) excavated an area 4 x 10 x 1½ feet deep. Found limestone. Straightened to upright position and retied. Removed stone and replaced with a Wash. County cast iron monument, 0.5 foot below road grade.
- 1974- Washington County Surveyor, Paul A. Johnson-RLS 10938, stamped "VERIFIED CORNER"
1980 on the tie sheet for the position (cast iron monument).
- 1983 July 26, Hult & Assoc. Land Surveyors (RLS 6617) in Certificate of Survey for Charles Shubat property in the Southwest Quarter of Section 32, show cast iron monument in place (Washington County Surveys Record No. 02633).
- 1984 An analysis of the record data compared to the field evidence indicates that the position of the cast iron monument provides a continuous chain of perpetuation of the original Public Land Survey corner.