

CERTIFICATE OF LOCATION OF GOVERNMENT CORNER

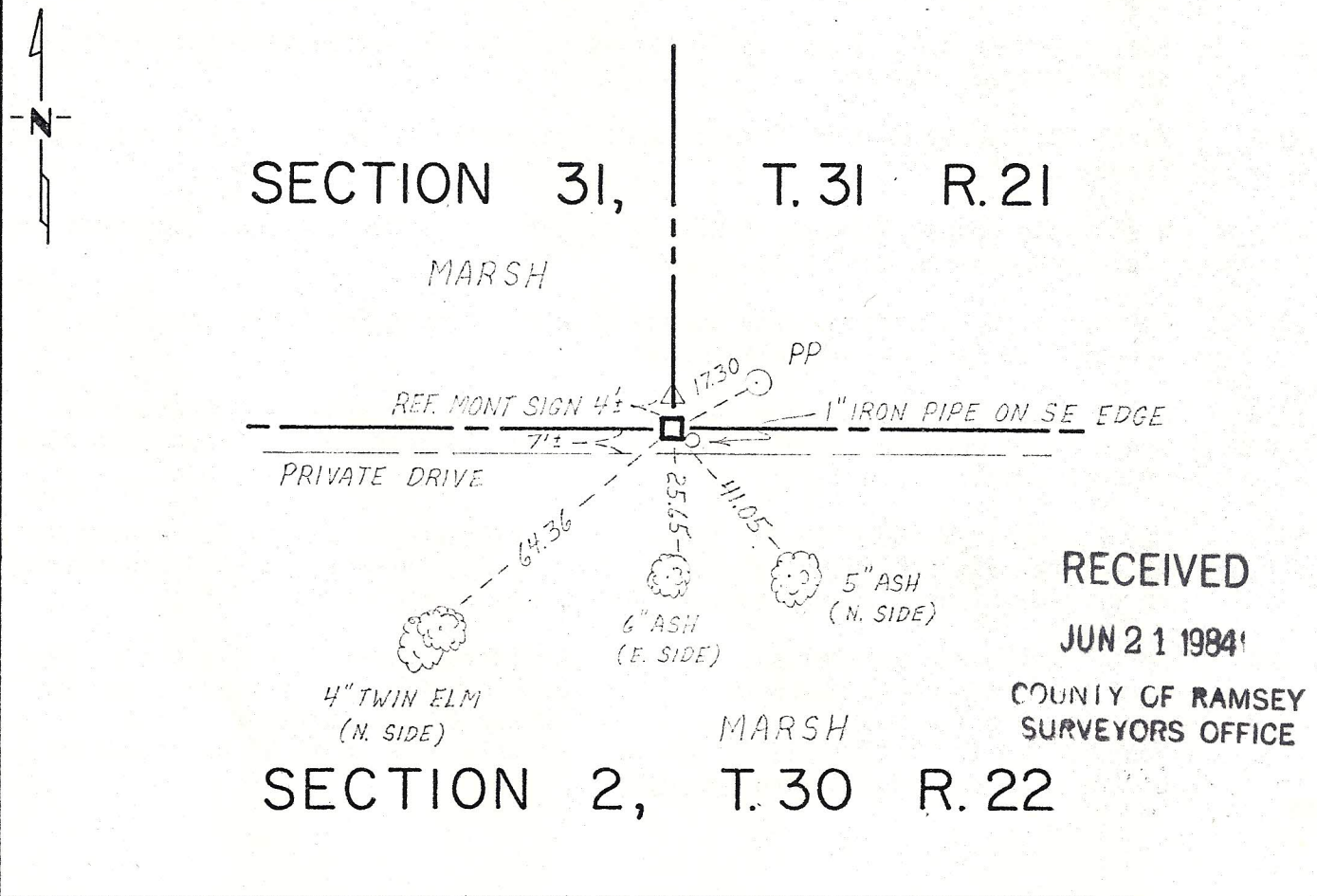
South Quarter _____ Corner of Section 31, Township 31, Range 21, 4th P.M.

STATE OF MINNESOTA, County of Washington

At the corner location shown on the sketch:

- On Oct. 4, 1973 found a 12 inch by 6 inch Limestone monument with drillhole
DATE
in center.
 - left monument as found, lowered monument, removed monument (explain)
- On _____ placed a _____
DATE

SKETCH OF REFERENCE TIES



RECEIVED
JUN 21 1984

COUNTY OF RAMSEY
SURVEYORS OFFICE

Statement of evidence relative to this corner location is on back of page.

I hereby certify that this document and the data contained herein was prepared by me or under my direct supervision.

Lawrence A. Nybeck 5-30-84
SIGNATURE DATE

Registration No. 12279

Land Surveyor, Professional Engineer
 County Surveyor, County Engineer

OFFICE OF THE REGISTER OF DEEDS
 County of _____

I hereby certify that this document was filed in the Reg. of Deeds office at _____ .M. on the _____ day of _____ A.D., 19 _____

Register of Deeds _____
 By _____, Deputy

DOCUMENT NO. _____

Statement of Evidence: South Quarter corner of Section 31, T31 R21.

- 1847 August 10-16, H.A. Wiltse, Deputy Surveyor, original U.S. Public Land Survey, ran the Third Correction Line. Set a post at quarter section corner and recorded two bearing trees:
Elm 6" N 52° E 43 links
Tamarack 12" N 89° W
- 1886 September 23, Plat of Shadyside No. 4 Bald Eagle, surveyed by Brinkenhoff & Phillips, was filed for record. Plat covers Government Lot 4 and the Southwest Quarter of the Southeast Quarter but this quarter corner is not identified on the plat map, and no monumentation is shown.
- 1906 December 20, County Surveyor J.M. Oldham in Survey No. 279, Book 1, page 163 and fieldbook 5, pages 71 & 72 states: "I find Govt Elm N 52° E .43 and Tamarack N 89° W .43". His sketch shows symbol ■ at the south quarter corner of Section 31.
1914. September 16, J.M. Oldham in fieldbook 9, page 45, notes monument in place at the quarter corner.
- 1946 March 13, Ramsey County Surveyor's Office records note a monument was found; tipped north.
- date unknown Washington County Surveyor's Office corner ties show sandstone monument; one inch iron pipe on east edge.
- 1973 October 4, Washington County survey crew traversing for Correction Line survey tied in stone at this corner.
- 1976 (approx) Don C. Hult-RLS 6617, on his section subdivision worksheet for Section 31 shows stone monument in place, down 0.1 foot in road, with 1 inch iron pipe on east edge.
- 1979 May 2, Donald W. Schmidt-RLS 10459, in Certificate of Survey for Robert J. Olsen property in Government Lot 4, Section 31, shows stone at south quarter corner (Washington County Surveys Record No. 01388 and No. 01261).
- 1984 April, Following an analysis of the record data compared to field measurements, the sandstone monument at this south quarter corner as verified in the Township Tie Book, page 168 by Washington County Surveyor Paul A. Johnson-RLS 10938 (1974-1980) provides a continuous chain of perpetuation of the original Public Land Survey.