

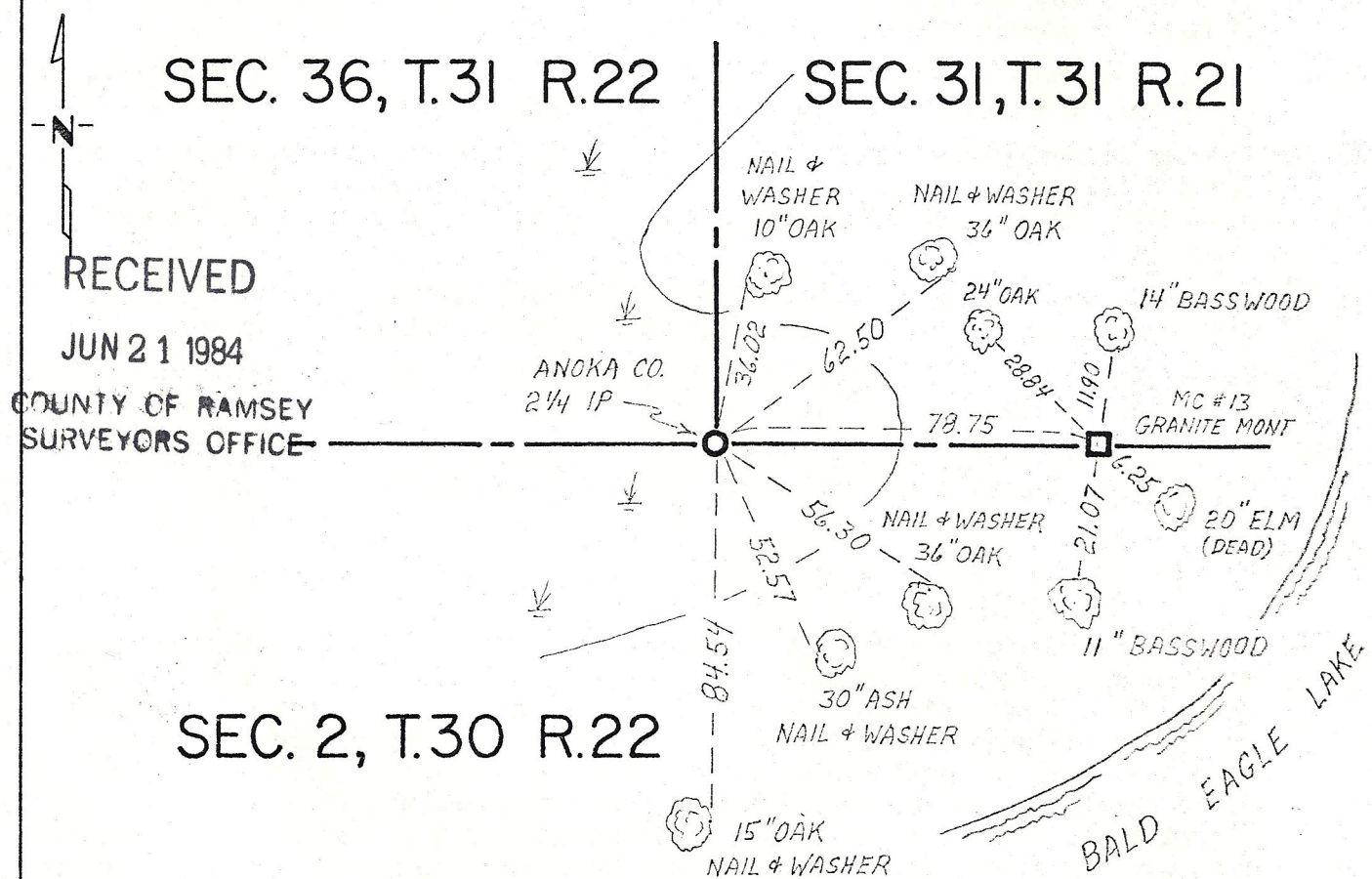
CERTIFICATE OF LOCATION OF GOVERNMENT CORNER

Southwest Corner of Section 31, Township 31, Range 21, 4th P.M.
STATE OF MINNESOTA, County of Washington

At the corner location shown on the sketch:

- On Oct. 4, 1973 found a 1/2 inch clinched iron pipe.
DATE
- left monument as found, lowered monument, removed monument (explain)
- On Mar. 19, 1984 found ~~XXXX~~ a 2 1/4 inch iron pipe set by Anoka County Surveyor in
DATE place of 1/2 inch clinched iron pipe.

SKETCH OF REFERENCE TIES



Statement of evidence relative to this corner location is on back of page.

I hereby certify that this document and the data contained herein was prepared by me or under my direct supervision.

Lawrence A. Nybeck 5-31-84
SIGNATURE DATE

Registration No. 12279

- Land Surveyor, Professional Engineer
- County Surveyor, County Engineer

OFFICE OF THE REGISTER OF DEEDS
County of _____

I hereby certify that this document was filed in the Reg. of Deeds office at _____ .M. on the _____ day of _____ A.D., 19 _____

Register of Deeds _____
By _____, Deputy

DOCUMENT NO. _____

Statement of Evidence: Township corner common to Sections 31, T31 R21 and Section 36, T31 R22.

- 1847 August 10-16, H.A. Wiltze, Deputy Surveyor, original U.S. Public Land Survey, ran the Third Correction Line. Set a post at township corner between Ranges 21 & 22 in a mound of earth and sod. Two pits, 10 links, north and south.
- 1906 December 20, Washington County Surveyor J.M. Oldham in Survey No. 279, Book 1, page 163 and fieldbook 5, pages 71 & 72, records his survey and subdivision of Section 31. For the southwest corner he notes section corner lost and shows a distance of 1.60 chains (105.6 feet) between the section corner and Meander Corner No. 13.
- 1917 December, County Surveyor Lewis W. Clarke in Survey No. 311, Book 1, page 186 shows the corner position 105.6 feet west of a granite monument at Meander Corner No. 13.
- 1960 July 15, James F. Simonet-RLS 705 in Certificate of Survey for Lorraine Silk property in Government Lot 5, Section 31, T31 R21 and the Southeast Quarter of Section 36, T31 R22 shows iron pipe in place, a distance of 79.2 feet west of meander corner (stone).
- 1964 August 13, Anoka County survey crew found 1/2 inch iron pipe, up 0.4 foot, in place per J. Simonet prior survey. Made reference ties.
- 1973 October 4, Washington County survey crew traversing for the Correction Line found a 1/2 inch clinched iron pipe set by J. Simonet and a 3/4 inch iron pipe with cap stamped RLS 6740 a distance of 3.84 feet east of J. Simonet's iron.
- 1977 Ernest G. Rud-RLS 9808, in Certificate of Survey for part of the Southeast Quarter, Section 36, T31 R22 shows symbol \circ at the southeast corner.
- 1977 May 4, Anoka County Surveyor's Office records note, "set and tied red and white iron pipe in place of 1/2" iron rod."
- 1984 March 19, Washington County survey crew traversing in Section 31, T31 R21 found Anoka County 2 1/4 inch iron pipe in place at this corner.
- 1984 April, Following analysis and comparison of the record data with the field measurements, it was found that J.M. Oldham's positioning of the southwest corner in a lost position west of Meander Corner No. 13 is not conclusive in procedures he used for its placement. Examination of possible situations used by Oldham for determining lost methods were tested. Solutions which would result in similar possibilities that would compare to Oldham's or Clarke's determination for a lost position could not be found. The 2 1/4 inch iron pipe as placed by the Anoka County Surveyor is accepted to be the correct location for this corner.