

CERTIFICATE OF LOCATION OF GOVERNMENT CORNER

County of Anoka

State of Minnesota

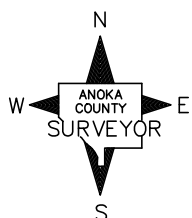
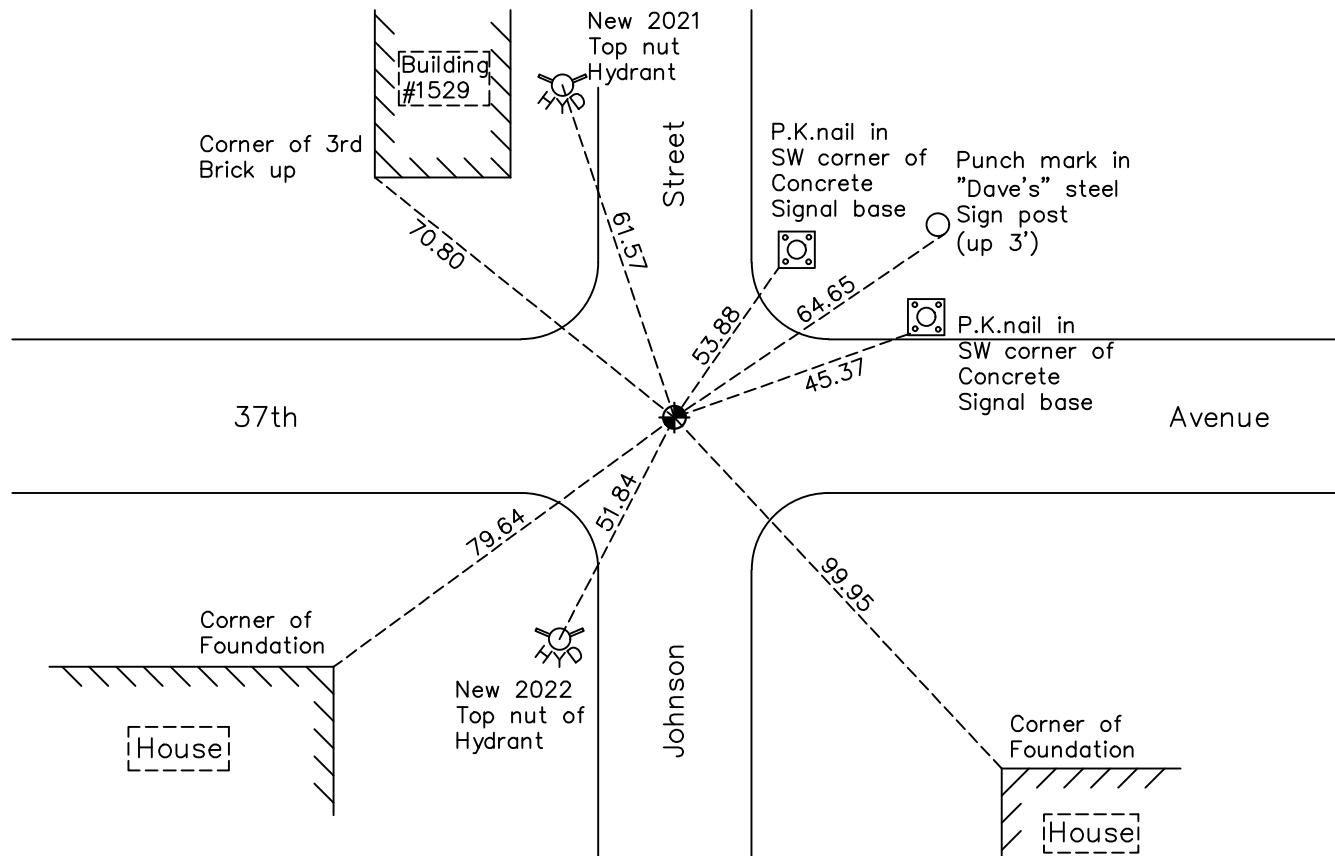
South $\frac{1}{4}$ Corner of Sec. 36 Township 30 Range 24

On the 19th day of August, 2022, the described corner was evidenced by a concrete monument with brass disc in covered tube prior to road construction

and to perpetuate the location of said corner, at the exact location thereof, a permanent marker was placed consisting of a new 8" cast iron monument in concrete

AND on the 30th day of September, 2024, said permanent marker was reset flush using historical ties. Verified position by RTK GPS method. Updated ties.

Updated reference ties are as shown below.



Revision Date

10/31/2024

N.A.D. 1983 Coordinates
(1996 Adjustment)

County Project Coordinates

Northing 100123.9263Easting 507639.4979Date 7/13/04

I hereby certify that this United States public land survey monument record is correct and complete to the best of my knowledge and belief.

David Zieglmeier Date 1/14/25

David Zieglmeier Anoka County Surveyor

Minnesota License Number 46179

HISTORY OF GOVERNMENT CORNER

Page No. 77

County of Anoka

State of Minnesota

South 1/4 Corner of Sec. 36 Township 30 Range 24

CORNER HISTORY:

October 1847 - This corner was established by James M. Marsh, Deputy Surveyor. Marsh marked this position by "set post at quarter section corner" with two bearing trees marked as accessories.

5/25/78, 7/21/80 - Found concrete monument with a brass disc set down 0.5'± in a covered tube. Updated ties.

May 23, 1986 - Found concrete monument with a brass disc prior to road construction set down 0.5'± in a covered tube. Added additional ties.

October 21, 1986 - Reset concrete monument with brass disc down 0.5'± in a covered tube after construction. Updated ties.

8/1/89, 7/25/94 - Found concrete monument with a brass disc set down 0.5'± in a covered tube. Updated ties.

July 13, 2004 - Established NAD 1983 (1996 adj.) Anoka County project coordinates by static GPS methods.
N = 100123.9263 E = 507639.4979

October 1, 2008 - Found concrete monument with a brass disc set down 0.5'± in a covered tube. Updated ties.

11/3/14, 12/20/19 - Found concrete monument with a brass disc set down 0.5'±. Covered tube disturbed and leaning over monument. Unable to update ties.

August 19, 2022 - Found concrete monument with a brass disc down 1'±. Covered tube disturbed and leaning over monument. Unable to update ties. Verified position by VRS GPS methods.

September 30, 2024 - Set 8" cast iron monument in concrete after road construction using historical ties. Verified position by RTK GPS method. Updated ties.