

CERTIFICATE OF LOCATION OF GOVERNMENT CORNER

MON. NO. 3140
old Index 1979

Section Line Delaware & E Page

Corner of Section _____ Township _____ Range _____ P.M.

STATE OF MINNESOTA, County of Ramsey

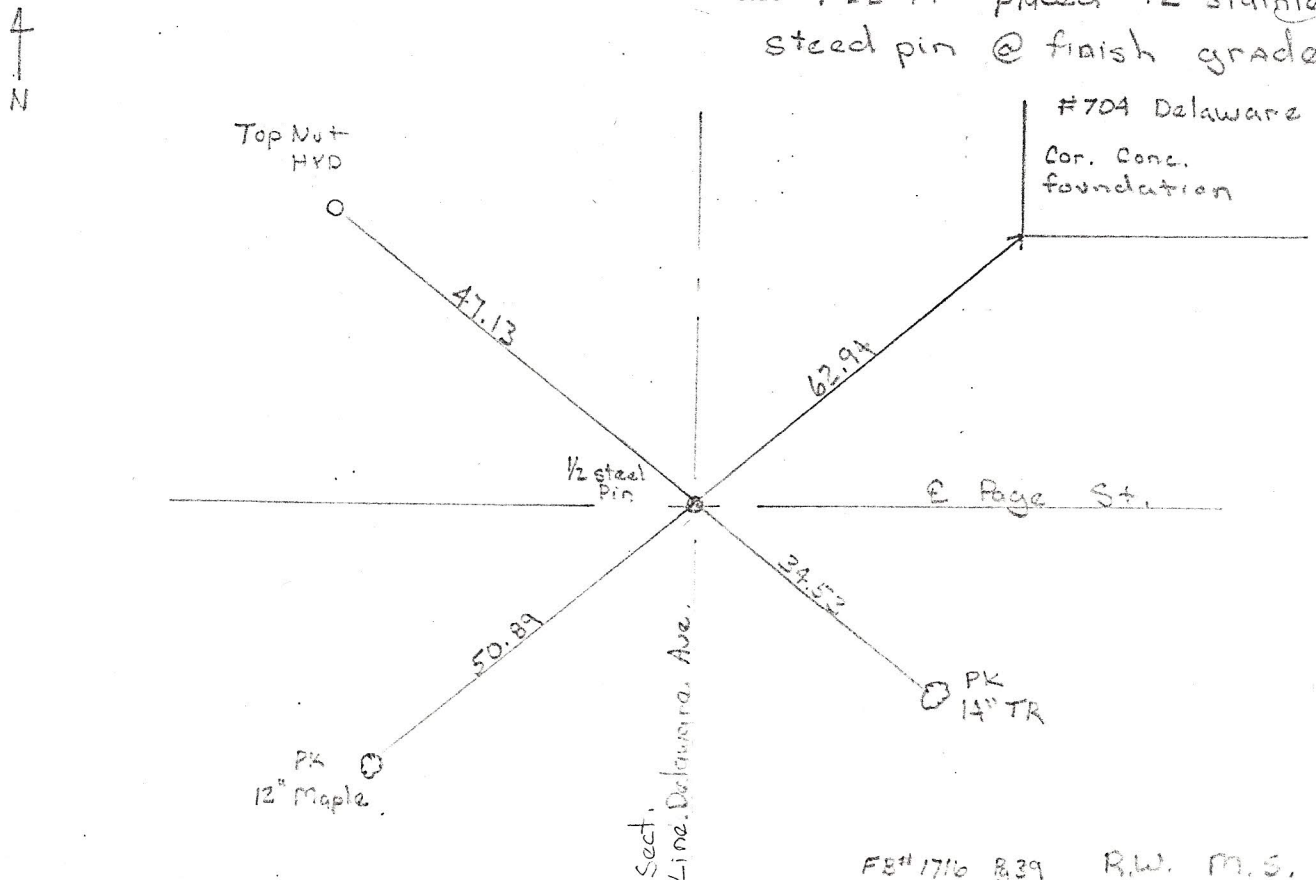
At the corner location shown on the sketch:

On 5-27-97 found a Granite monument 0.75' below
asphalt surface - removed for street construction

- left monument as found lowered monument removed monument (explain)

On 9-11-97 placed a GIM in concrete - NOTE: Top Broke
by paving Contractor - base of monument remains.

SKETCH OF REFERENCE TIES 9-23-97 placed 1/2 stainless
steel pin @ finish grade



Statement of evidence relative to this corner is available from St. Paul Public Works Dept., Survey Division

I hereby certify that this document and the data contained herein was prepared by me or under my direct supervision.

Rand O. Chappell oct 10, 97
SIGNATURE DATE

Registration No. 13298

- Land Surveyor County Surveyor
 Professional Engineer
 Chief Surveyor, City of St. Paul

Office of The County Recorder, County of Ramsey

I hereby certify that this document was filed in the county

Recorders office at _____ m. on the _____ day of _____

County Recorder _____

By _____, Deputy

DOCUMENT NUMBER _____