

CERTIFICATE OF LOCATION OF GOVERNMENT CORNER

MON. NO. 3141
OLD INDEX 1976

Section Line Delaware & Winona St

Corner of Section _____ Township _____ Range _____ P.M.

STATE OF MINNESOTA, County of Ramsey

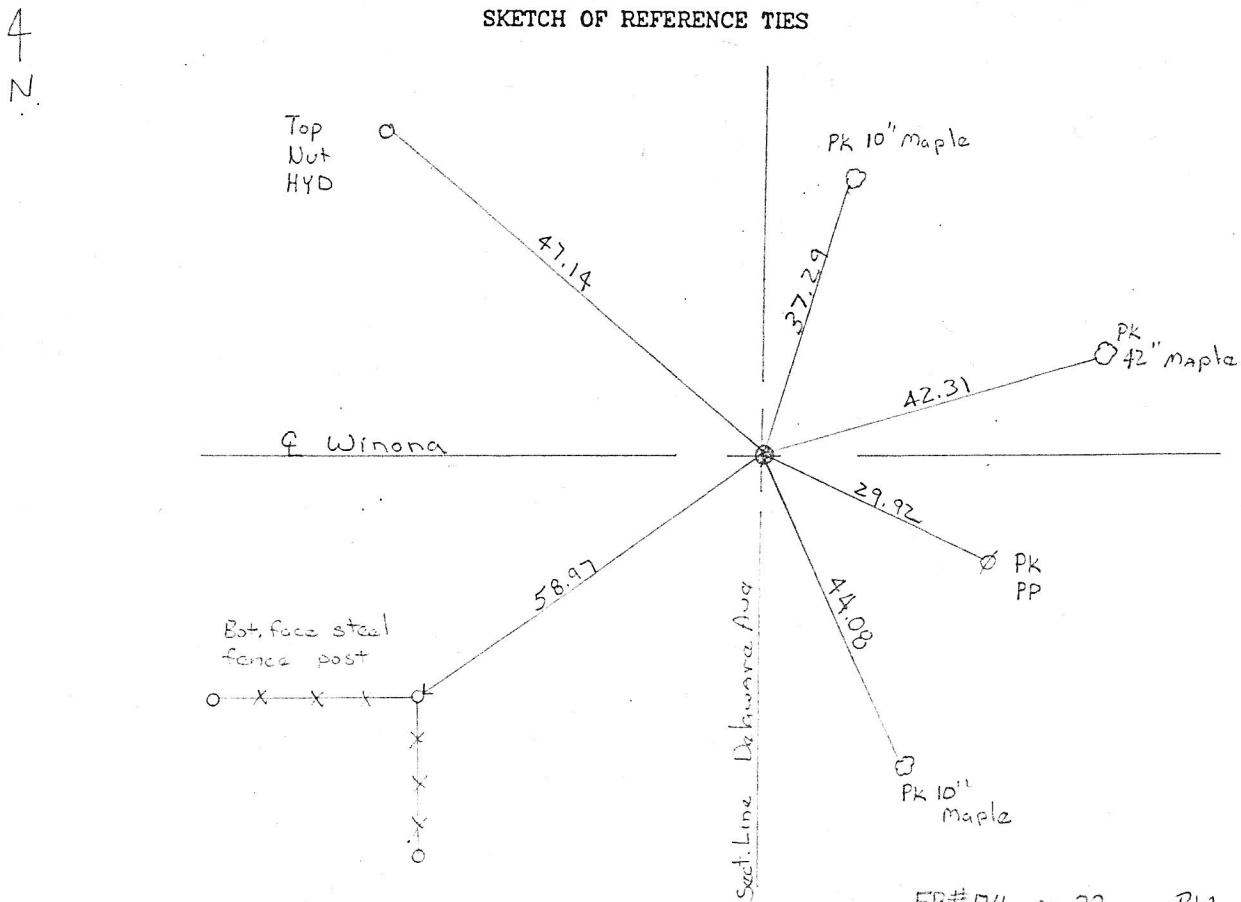
At the corner location shown on the sketch:

On 5-8-97 found a granite monument 1.5' below oiled surface
date
removed for street construction

- left monument as found lowered monument removed monument (explain)

On 9-11-97 placed a CI M in concrete to finish grade
date

SKETCH OF REFERENCE TIES



FR# 716 pg 38 RW, MS

Statement of evidence relative to this corner is available from St. Paul Public Works Dept., Survey Division

I hereby certify that this document and the data contained herein was prepared by me or under my direct supervision.

David D. Chrysler oct 10, 97
SIGNATURE DATE

Registration No. 13298

- Land Surveyor County Surveyor
 Professional Engineer
 Chief Surveyor, City of St. Paul

Office of The County Recorder, County of Ramsey

I hereby certify that this document was filed in the county

Recorders office at _____ m. on the _____ day of _____

County Recorder _____

By _____, Deputy

DOCUMENT NUMBER _____