

# CERTIFICATE OF LOCATION OF GOVERNMENT CORNER

MON. NO. 645 N

E 1/4 SE 1/4 Corner of Section 2 Township 28 Range 22, 4 P.M.

STATE OF MINNESOTA, County of Ramsey

At the corner location shown on the sketch:

On July 13, 1998 found a granite (down 6"±) by milling machine

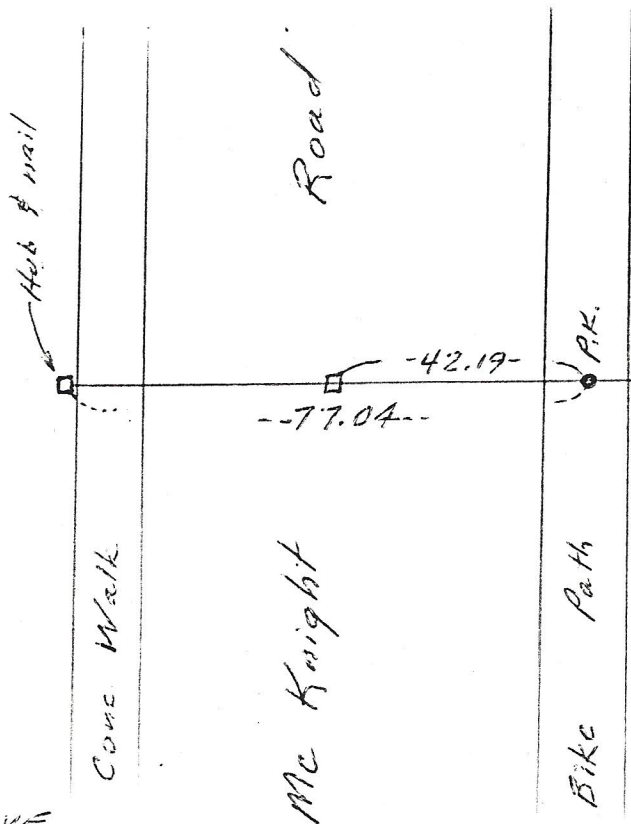
Top appears to be chipped, not flat).

left monument as found       lowered monument       removed monument (explain)

On Sept 14, 1998 placed a 12" MH casting over granite.

SKETCH OF REFERENCE TIES

EDGE BROOK AVE



FALCON AVE

Statement of evidence relative to this corner is available from St. Paul Public Works Dept., Survey Division

I hereby certify that this document and the data contained herein was prepared by me or under my direct supervision.

Ronald Meyer      11-18-98  
SIGNATURE      DATE

Registration No. 9051

- Land Surveyor       County Surveyor  
 Professional Engineer  
 Chief Surveyor, City of St. Paul

Office of The County Recorder, County of Ramsey

I hereby certify that this document was filed in the county

Recorders office at \_\_\_\_\_ m. on the \_\_\_\_\_ day of \_\_\_\_\_

County Recorder \_\_\_\_\_

By \_\_\_\_\_, Deputy

DOCUMENT NUMBER \_\_\_\_\_