

CERTIFICATE OF LOCATION OF GOVERNMENT CORNER

MON. NO. 621

Center - Corner of Section 2 Township 28 Range 22, 4 P.M.

STATE OF MINNESOTA, County of Ramsey

At the corner location shown on the sketch:

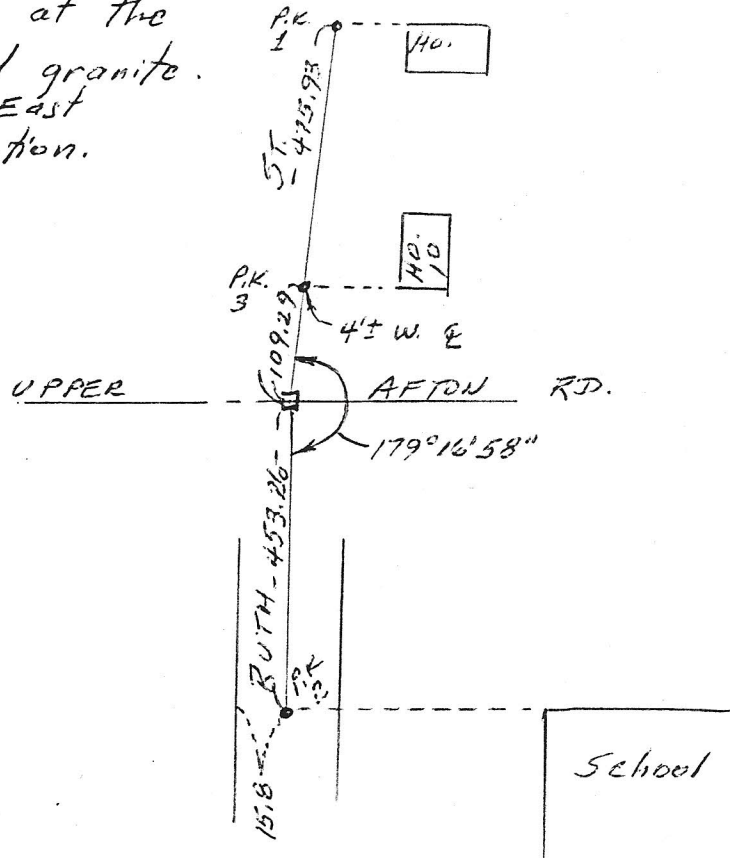
On May 18, 1998 found a short C.I. over a granite monu,
date
down 8"±.

- left monument as found
 lowered monument
 removed monument (explain)
short C.I. only

On Sept. 23, 1998 placed a 12" manhole casting over granite.
date

SKETCH OF REFERENCE TIES

This is location at the surface; found granite below, 0.02-0.03 East of surface location.



Statement of evidence relative to this corner is available from St. Paul Public Works Dept., Survey Division

I hereby certify that this document and the data contained herein was prepared by me or under my direct supervision.

Ronald Meyer 9-24-98
SIGNATURE DATE

- Registration No. 9051
- Land Surveyor
 County Surveyor
 Professional Engineer
 Chief Surveyor, City of St. Paul

Office of The County Recorder, County of Ramsey

I hereby certify that this document was filed in the county

Recorders office at _____ m. on the _____ day of _____

County Recorder _____

By _____, Deputy

DOCUMENT NUMBER _____