

116

CERTIFICATE OF LOCATION OF GOVERNMENT CORNER

East 1/4 Corner of Section 36, Township 29, Range 23, 4th P.M.

STATE OF MINNESOTA, County of Ramsey

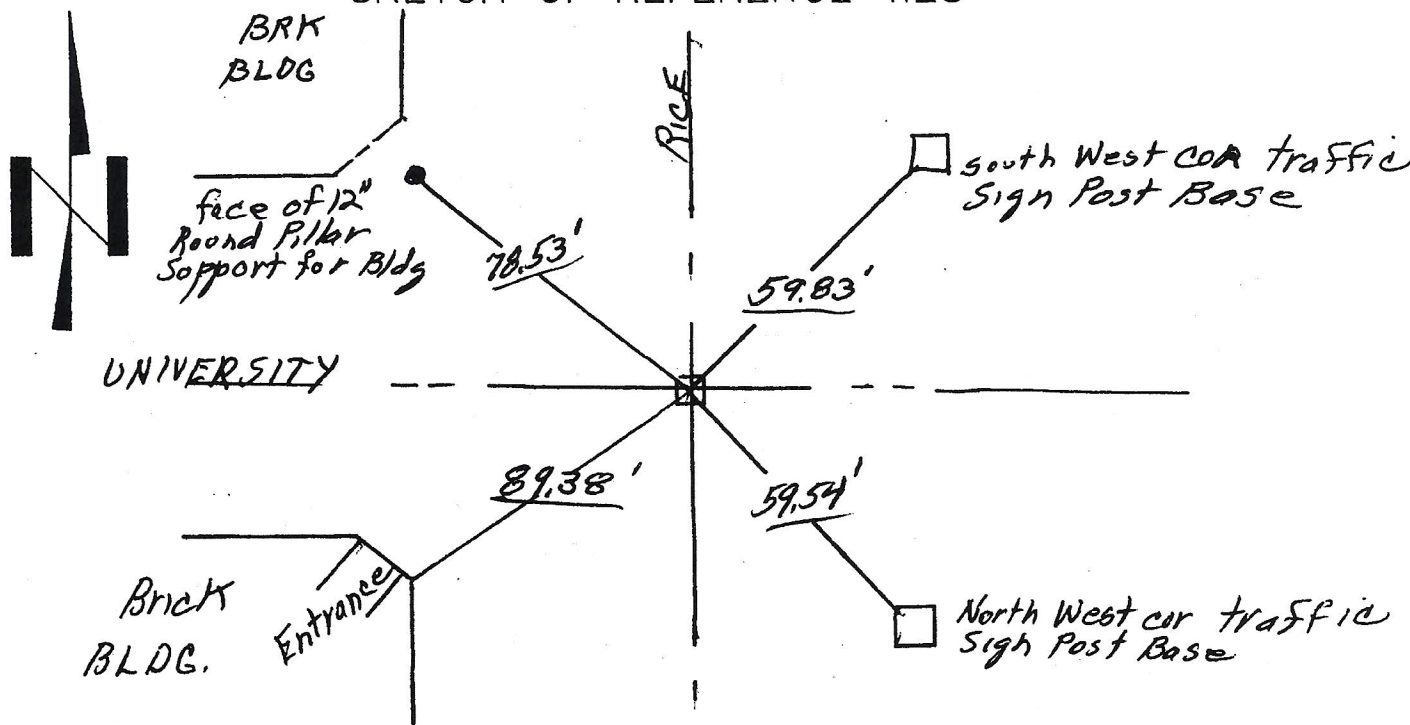
At the corner location shown on the sketch:

On March 13, 1991 found a Granite Monument 0.5'
below Present Asph Street Grade

left mon. as found lowered mon. removed mon. (explain)

On _____ placed a _____

SKETCH OF REFERENCE TIES



Statement of evidence relative to this corner location is on back of page

I hereby certify that this document and the date contained herein was prepared by me or under my supervision.

Office of the Register of Deeds
County of _____

I hereby certify that this document was filed in the Reg. of Deeds office at _____ M.

on the _____ day of _____ A.D., 19____
Register of Deeds _____ By _____

DOCUMENT NO. _____

Signature _____

March 13, 1991
date

Registration No. _____

Land Surveyor Professional Engineer

County Surveyor County Engineer

