

CERTIFICATE OF LOCATION OF GOVERNMENT CORNER

CITY MON. NO. 8

OLD INDEX NO. 1046

N. 1/4 Corner of Section 23 Township 29 Range 23, 4th P.M.

STATE OF MINNESOTA, County of Ramsey

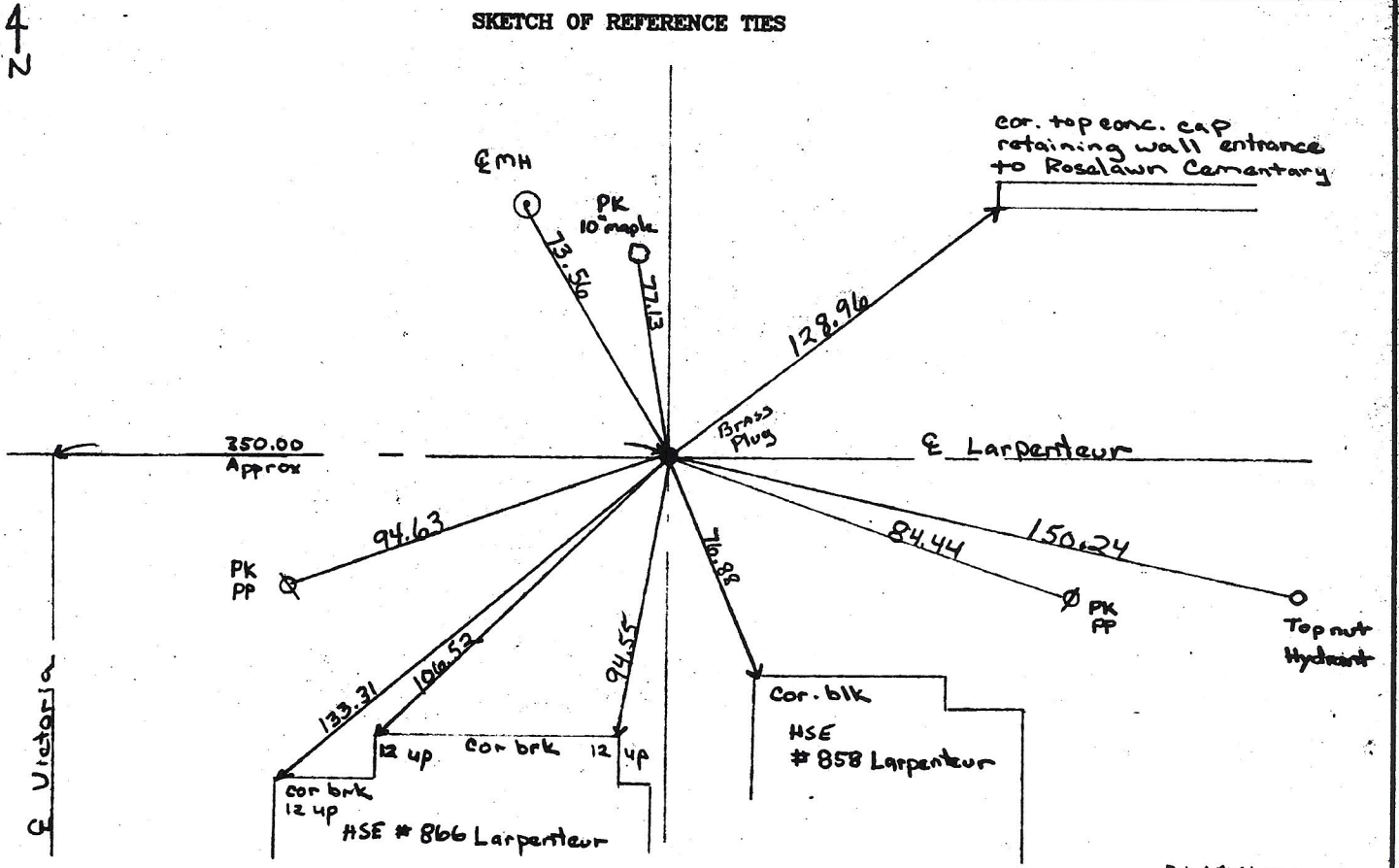
At the corner location shown on the sketch:

On March 20, 2001 found a Brass Plug at grade in eastbound Lane
date

left monument as found lowered monument removed monument (explain)

On _____ placed a _____
date

SKETCH OF REFERENCE TIES



Statement of evidence relative to this corner is available from the St. Paul Public Works Dept., Survey Division RWMSLCYA

I hereby certify that this document and the data contained herein was prepared by me or under my direct supervision.

[Signature] 4/4/01
DATE

Registration No. 13144

- Land Surveyor County Surveyor
- Professional Engineer
- Chief Surveyor, City of St. Paul

Office of The County Recorder, County of Ramsey

I hereby certify that this document was filed in the county
Recorders office at _____ M. on the _____ day of _____

County Recorder _____

By _____, Deputy

DOCUMENT NUMBER _____