

CERTIFICATE OF LOCATION OF GOVERNMENT CORNER

$\frac{1}{4}$ Corner to Section 17 Township 29N Range 22W No. _____

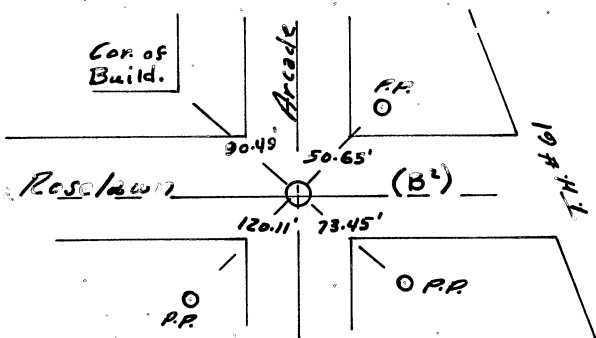
STATE OF MINNESOTA,

County of Ramsey S.S.

I hereby certify that on the 16 day of October 1962,
 that I, Warren I. Forsberg, a Registered Land Surveyor, ~~County Surveyor,~~
~~County Highway Engineer,~~ ^{reset} found the East 1/4 corner of Section 17-T 29N-R 22W
 which was evidenced by ties from Maplewood tie book and iron pipe
in place and I further certify that to perpetuate the

location of such corner I did, at the exact location thereof, place a permanent marker
 consisting of cast iron monument.

I further certify that I established Four references or witness monuments consist-
 ing of one building and 3 power poles which reference or witness monuments are
 located in the manner following.



- N.W. Corner of Building 90.49'
- N.E. Power Pole 50.65'
- S.E. Power Pole 73.45'
- S.W. Power Pole 120.11'

Cast iron Mon. set flush with road surface

Dated at St. Paul, Minnesota, this 27 day of December, 1962.

Warren I. Forsberg
~~County Surveyor, County Highway Engineer,~~
 Registered Land Surveyor No. 4840

OFFICE OF THE REGISTER OF DEEDS

County of _____

I hereby certify that the within instrument was filed in this office for record on the
 _____ day of _____ A.D., 19____.

Register of Deeds

By _____, Deputy