

CERTIFICATE OF LOCATION OF GOVERNMENT CORNER

Center Corner to Section 17 Township 29 N. Range 23 W. No. 4

STATE OF MINNESOTA,

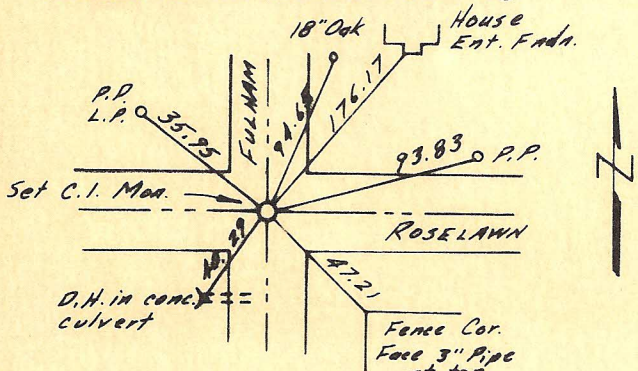
County of Ramsey S.S.

I hereby certify that on the 7th day of June 1962,
 that I, Charles O. Georgi, a Registered Land Surveyor, ~~County Surveyor,~~
~~County Highway Engineer,~~ ^{reset} found the Center corner of Section 17, T29N, R23W.
 which was evidenced by old ties

and I further certify that to perpetuate the location of such corner I did, at the exact location thereof, place a permanent marker consisting of cast iron monument.

I further certify that I established 6 references or witness monuments consisting of Drill Hole in concrete culvert, Fence corner Post, House Foundation, 2 Power Poles, Oak Tree which reference or witness monuments are

located in the manner following.



- NW 35.95 Power Pole, Light Pole
 - SW 40.29 Drill Hole in conc. culvert
 - SE 47.21 Fence Corner, top 3" pipe
 - ENE 93.83 Power Pole
 - NE 176.17 House Entrance Foundation
 - NNE 94.65 18" Oak Tree
- (C.I.M. flush with blacktop pave in center of Roselawn and Fulham intersection)

Dated at St. Paul, Minnesota, this 2nd day of August, 1962.

Charles O. Georgi
~~County Surveyor, County Highway Engineer,~~
 Registered Land Surveyor No. 3960

OFFICE OF THE REGISTER OF DEEDS

County of

I hereby certify that the within instrument was filed in this office for record on the