

CERTIFICATE OF LOCATION OF GOVERNMENT CORNER

Center Corner to Section 17 Township 29 N. Range 23 W. No. _____

STATE OF MINNESOTA,

County of Ramsey S.S.

I hereby certify that on the 7th day of June 1962,

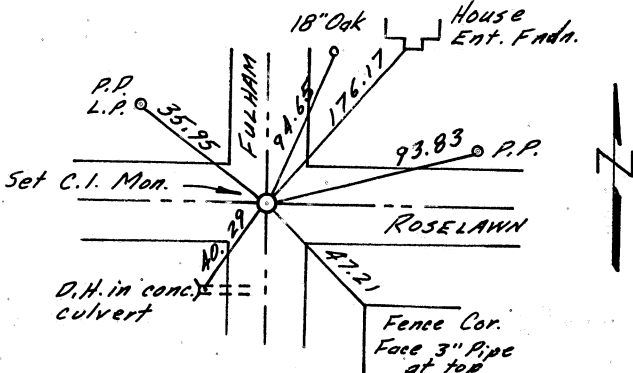
that I, Charles O. Georgi, a Registered Land Surveyor, ~~County Surveyor,~~
~~County Highway Engineer,~~ ^{reset} found the Center corner of Section 17, T29N, R23W.

which was evidenced by old ties

and I further certify that to perpetuate the location of such corner I did, at the exact location thereof, place a permanent marker consisting of cast iron monument.

I further certify that I established 6 references or witness monuments consisting of Drill Hole in concrete culvert, Fence corner Post, House Foundation, 2 Power Poles, Oak Tree which reference or witness monuments are

located in the manner following.



- NW 35.95 Power Pole, Light Pole
- SW 40.29 Drill Hole in conc. culvert
- SE 47.21 Fence Corner, top 3" pipe
- ENE 93.83 Power Pole
- NE 176.17 House Entrance Foundation
- NNE 94.65 18" Oak Tree

(C.I.M. flush with blacktop pave in center of Roselawn and Fulham intersection)

Dated at St. Paul, Minnesota, this 2nd day of August, 1962.

Charles O. Georgi
~~County Surveyor, County Highway Engineer,~~
 Registered Land Surveyor No. 3960

OFFICE OF THE REGISTER OF DEEDS

County of _____

I hereby certify that the within instrument was filed in this office for record on the _____ day of _____ A.D., 19____.

Register of Deeds

By _____, Deputy