

# CERTIFICATE OF LOCATION OF GOVERNMENT CORNER

N.W. Corner to Section 15 Township 29N Range 22W

No. \_\_\_\_\_

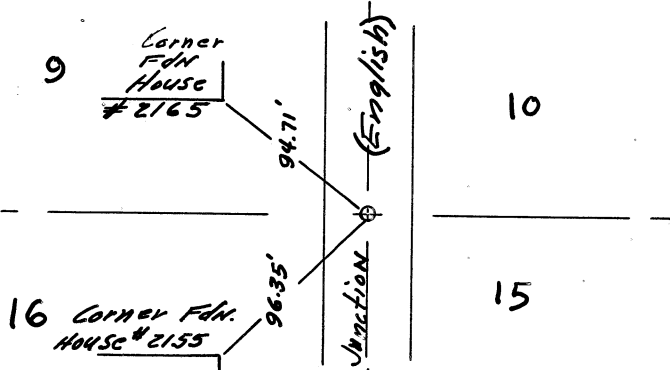
STATE OF MINNESOTA,

County of Ramsey S.S.

I hereby certify that on the 16 day of October 1962,  
 that I, Warren I. Forsberg, a Registered Land Surveyor, ~~County Surveyor,~~  
~~County Highway Engineer,~~ <sup>reset</sup> found the N.W. corner of Section 15-T29N-R22W  
 which was evidenced by ties from Maplewood tie book and iron  
pipe in place

and I further certify that to perpetuate the location of such corner I did, at the exact location thereof, place a permanent marker consisting of cast iron monument

I further certify that I established 2 references or witness monuments consisting of Corners of Conc. Block Foundations which reference or witness monuments are located in the manner following.



N.W. 94.71' to Corner of Foundation  
 S.W. 96.35' to Corner of Foundation  
 Cast iron monument set flush with surface road.

Dated at St. Paul, Minnesota, this 27 day of December, 1962.

Warren I. Forsberg  
~~County Surveyor, County Highway Engineer,~~  
 Registered Land Surveyor No. 4840

OFFICE OF THE REGISTER OF DEEDS

County of \_\_\_\_\_

I hereby certify that the within instrument was filed in this office for record on the \_\_\_\_\_ day of \_\_\_\_\_ A.D., 19\_\_\_\_.

Register of Deeds \_\_\_\_\_

By \_\_\_\_\_, Deputy