

CERTIFICATE OF LOCATION OF GOVERNMENT CORNER

N $\frac{1}{4}$ Corner to Section 14 Township 29 N. Range 23 W. No. _____

STATE OF MINNESOTA,

County of Ramsey S.S.

I hereby certify that on the 27th day of September 1962,
that I, Charles O. Georgi, a Registered Land Surveyor, ~~County Surveyor,~~

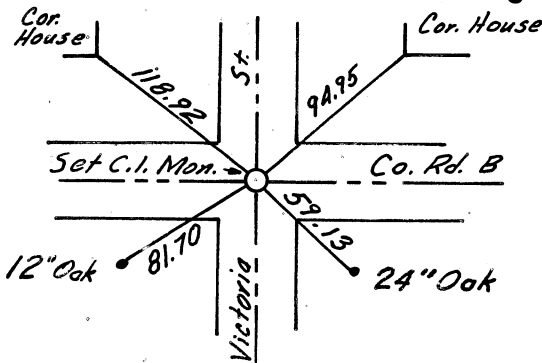
~~County Highway Engineer,~~ ^{reset} found the N $\frac{1}{4}$ corner of Section 14, T29N, R23W.

which was evidenced by old ties to monument in 1959

and I further certify that to perpetuate the location of such corner I did, at the exact location thereof, place a permanent marker consisting of cast iron monument.

I further certify that I established 4 references or witness monuments consisting of ties to 2 Houses and 2 trees which reference or witness monuments are

located in the manner following.



- NW 118.92 SE Cor. House
 - NE 94.95 SW Cor. House
 - SW 81.70 12" Oak Tree
 - SE 59.13 24" Oak Tree
- (C.I. M. flush with blacktop pave in center of intersecon.

Dated at St. Paul, Minnesota, this 3 day of October, 1962.

~~County Surveyor, County Highway Engineer,~~

Registered Land Surveyor No. 3960

OFFICE OF THE REGISTER OF DEEDS

County of _____

I hereby certify that the within instrument was filed in this office for record on the _____ day of _____ A.D., 19____.

Register of Deeds

By _____, Deputy