

CERTIFICATE OF LOCATION OF GOVERNMENT CORNER

S. 1/4 Corner to Section 8 Township 29 N. Range 23 W. No. _____

STATE OF MINNESOTA,

County of Ramsey S.S.

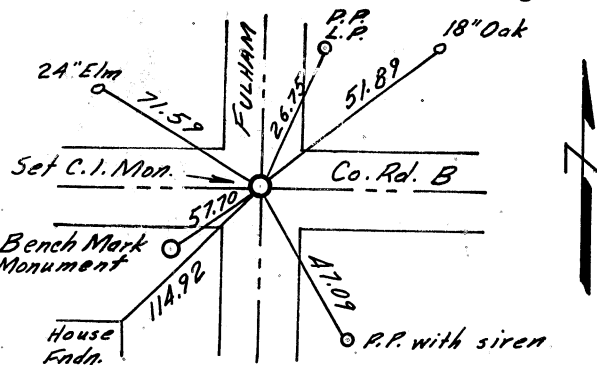
I hereby certify that on the 7th day of June 1962,
 that I, Charles O. Georgi, a Registered Land Surveyor, ~~County Surveyor,~~
~~County Highway Engineer,~~ ^{reset} found the S 1/4 corner of Section 8, T29N, R23W.
 which was evidenced by old ties

and I further certify that to perpetuate the location of such corner I did, at the exact location thereof, place a permanent marker consisting of cast iron monument

I further certify that I established 6 references or witness monuments consisting of ties to 2 trees, 2 power poles, House Foundation ^{and a B.M. mon.} which reference or witness monuments are

located in the manner following.

- NW 71.59 24" Elm Tree
 - WSW 57.70 Bench Mark Monument in lawn
 - SW 114.92 N.E. Corner of House Foundation
 - SE 47.09 Power Pole with siren
 - NE 51.89 18" Oak Tree
 - NNE 26.75 Power Pole, Light Pole
- (C.I.M. flush with blacktop pave in center of intersection)



Dated at St. Paul, Minnesota, this 2nd day of August, 1962.

Charles O. Georgi
~~County Surveyor, County Highway Engineer,~~
 Registered Land Surveyor No. 3960

OFFICE OF THE REGISTER OF DEEDS

County of _____

I hereby certify that the within instrument was filed in this office for record on the _____ day of _____ A.D., 19____.

Register of Deeds

By _____, Deputy