

CERTIFICATE OF LOCATION OF GOVERNMENT CORNER

N.E. Corner to Section 10 Township 29N Range 22W No. _____

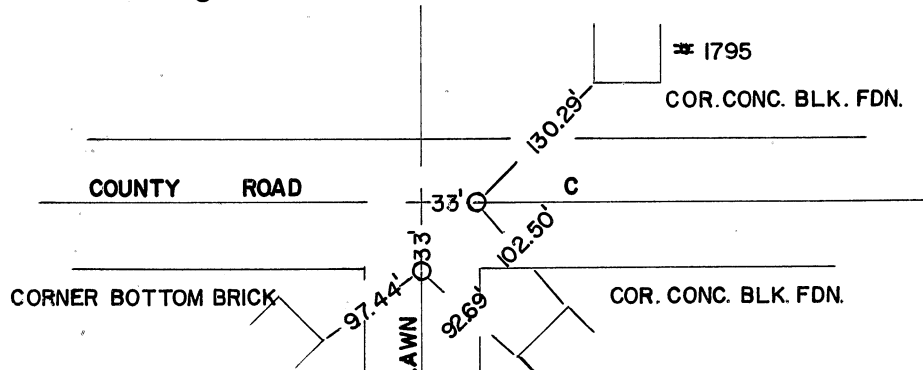
STATE OF MINNESOTA,

County of RAMSEY S.S.

I hereby certify that on the 16 day of OCTOBER 1962,
that I, WARREN I. FORSBERG, a Registered Land Surveyor, ~~County Surveyor,~~
~~County Highway Engineer,~~ RESET found the N.E. corner of SECTION 10, T29N, 22W
which was evidenced by TIES FROM MAPLEWOOD TIE BOOK

and I further certify that to perpetuate the
location of such corner I did, at the exact location thereof, place a permanent marker
consisting of NO MONUMENT SET AT THE CORNER.

I further certify that I established 2 references or witness monuments consist-
ing of CAST IRON MONUMENTS 33.0'S & E which reference or witness monuments are
located in the manner following.



Dated at ST. PAUL, Minnesota, this 27 day of DECEMBER, 1962.

SOUTH

Warren I. Forsberg
~~County Surveyor, County Highway Engineer,~~
Registered Land Surveyor No. 4840

OFFICE OF THE REGISTER OF DEEDS

County of _____

I hereby certify that the within instrument was filed in this office for record on the
_____ day of _____ A.D., 19____.

Register of Deeds

By _____, Deputy