

**Hennepin County Public Land Survey Ties**

Northeast Corner of Section 07,  
Township 029, Range 23

PLS Name:

**0292307NE**

**Comments:**

Found Cast Iron Monument even with surface of concrete road in good condition. Existing ties fit reasonably well. Retied.

GPS No. 6872

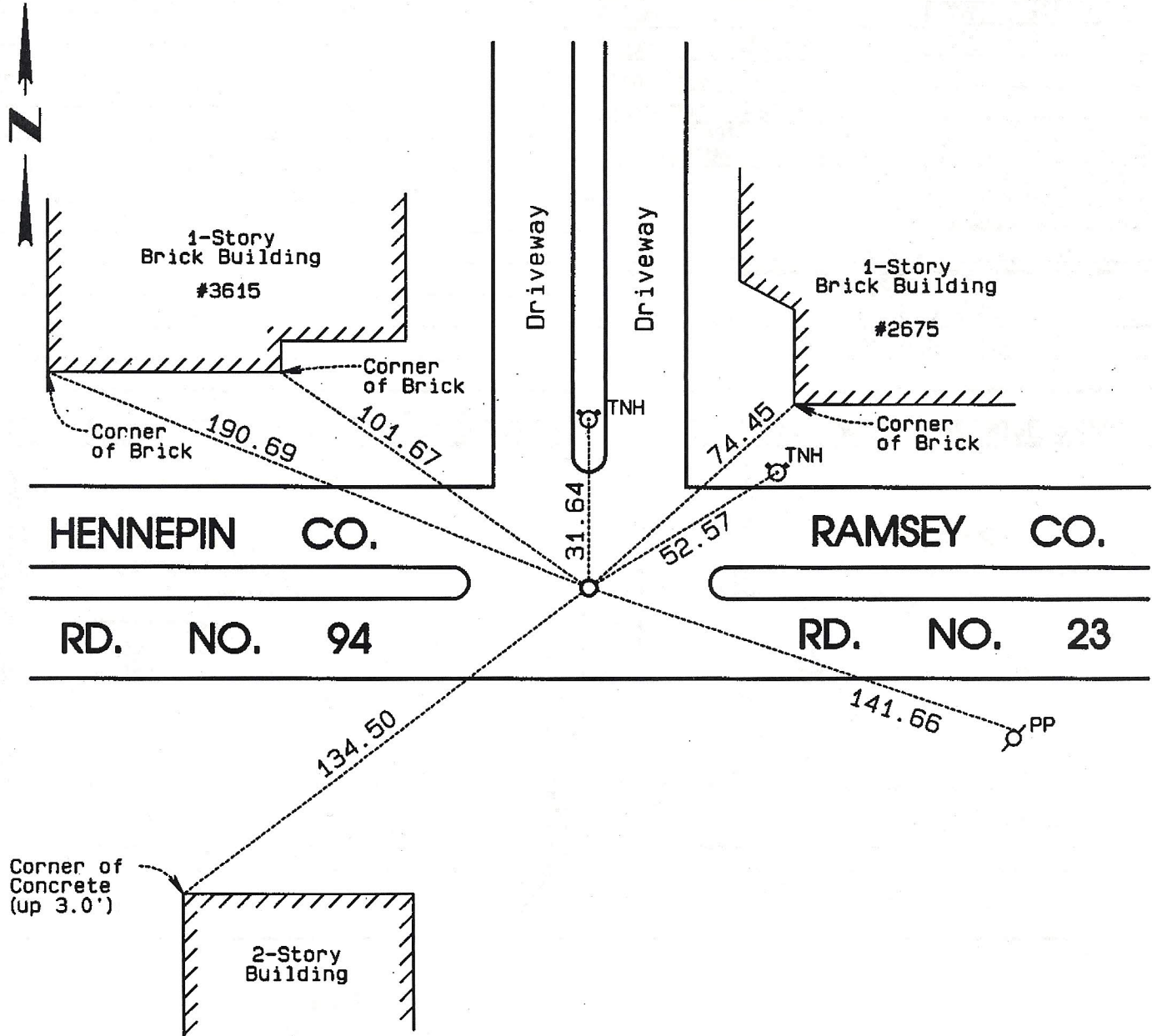
Page 7

Date: 4-03-2002

Temperature: 36°  
Monument Type: CIM  
Equipment: GEO 620

NOTE: All side ties are nail and disk unless otherwise shown.

Crew: Clarke / Paulsen



Checked by: P.A.N.

NOTE: If the condition of this monument is questionable, please call the Hennepin County Surveyor's Office at 612-348-3131.