

CERTIFICATE OF LOCATION OF GOVERNMENT CORNER

County of Anoka

State of Minnesota

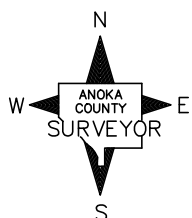
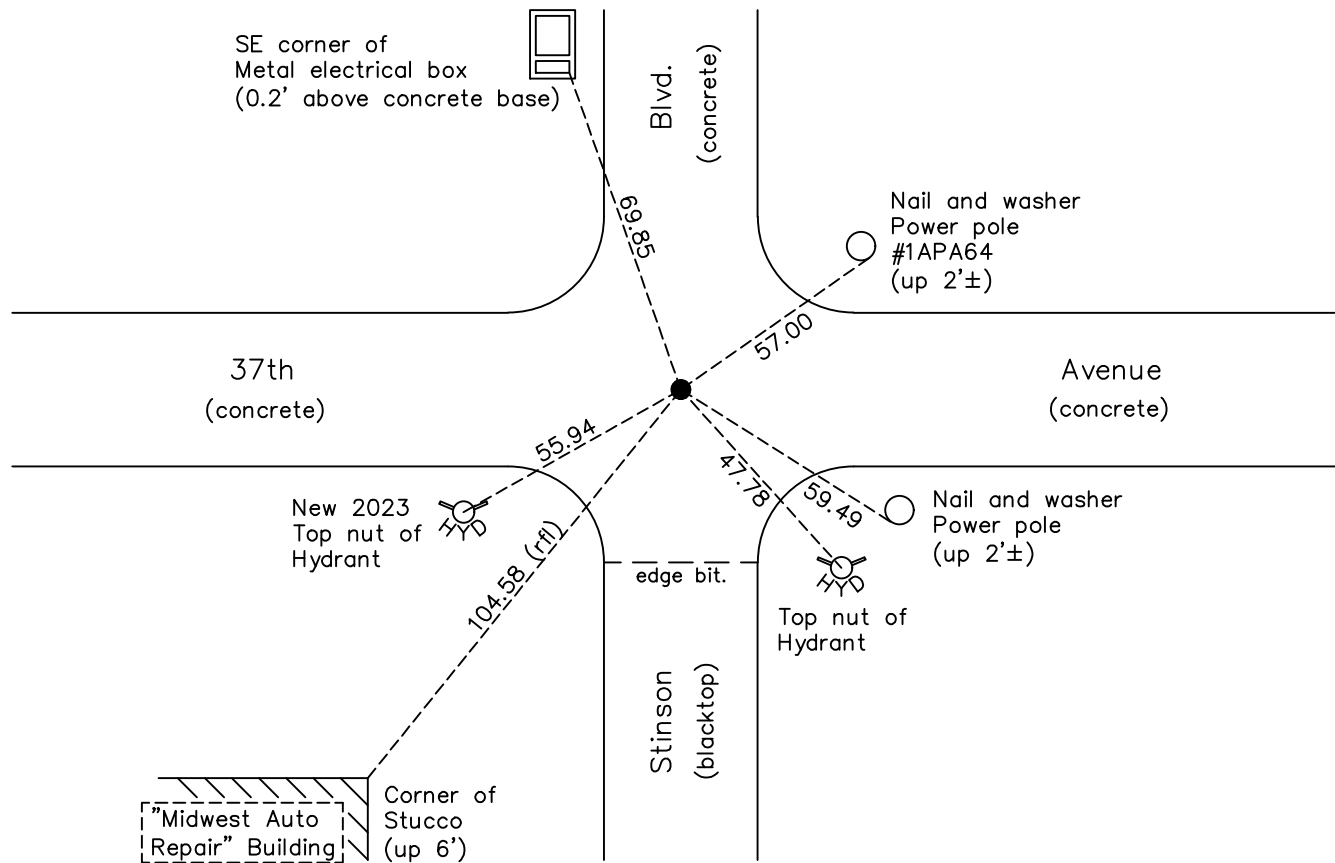
Southeast Corner of Sec. 36 Township 30 Range 24

On the 30th day of September, 2024, the described corner was evidenced by a 8" cast iron monument reset in concrete after road construction

and to perpetuate the location of said corner, at the exact location thereof, a permanent marker was placed consisting of a new cast iron monument

AND on the 30th day of September, 2024, said permanent marker was reset down 0.1'± using historical ties. Verified position by RTK GPS method. Updated ties.

Updated reference ties are as shown below.



Revision Date

12/27/22

N.A.D. 1983 Coordinates
(1996 Adjustment)

County Project Coordinates	
Northing	100146.6700
Easting	510272.0496
Date	7/13/04

I hereby certify that this United States public land survey monument record is correct and complete to the best of my knowledge and belief.

David Zieglmeier Date 11/7/24

David Zieglmeier Anoka County Surveyor

Minnesota License Number 46179

HISTORY OF GOVERNMENT CORNER

Page No. 76

County of Anoka

State of Minnesota

Southeast Corner of Sec. 36 Township 30 Range 24

CORNER HISTORY:

October 1847 - This corner was established by James M. Marsh, Deputy Surveyor. Marsh marked this position by "set post for corner to Townships 29 and 30 N. Ranges 23 and 24 W" with four bearing trees marked as accessories.

April 8, 1943 - Harvey Cartwright found a brass plug down 8" in a concrete road. Updated ties.

9/14/60, 5/15/64 - Found brass plug in concrete with an 'X' mark on top. Updated ties.

6/28/66, 8/12/70, 6/19/74, 8/8/77, 7/21/80, 8/3/89, 7/25/94 - Found brass plug down in covered tube at intersection of roads. Updated ties.

July 13, 2004 - Established NAD 1983 (1996 adj.) Anoka County project coordinates by static GPS methods.
N = 100146.6700 E = 510272.0496

September 30, 2008 - Found brass plug in concrete down 1'±. Updated ties.

11/3/14, 9/19/22 - Found brass plug in concrete down 1'±. Verified position by VRS GPS method. Updated ties.

September 30, 2024 - Set 8" cast iron monument in concrete down 0.1'± after road construction using historical ties. Verified position by RTK GPS method. Updated ties.