

CERTIFICATE OF LOCATION OF GOVERNMENT CORNER

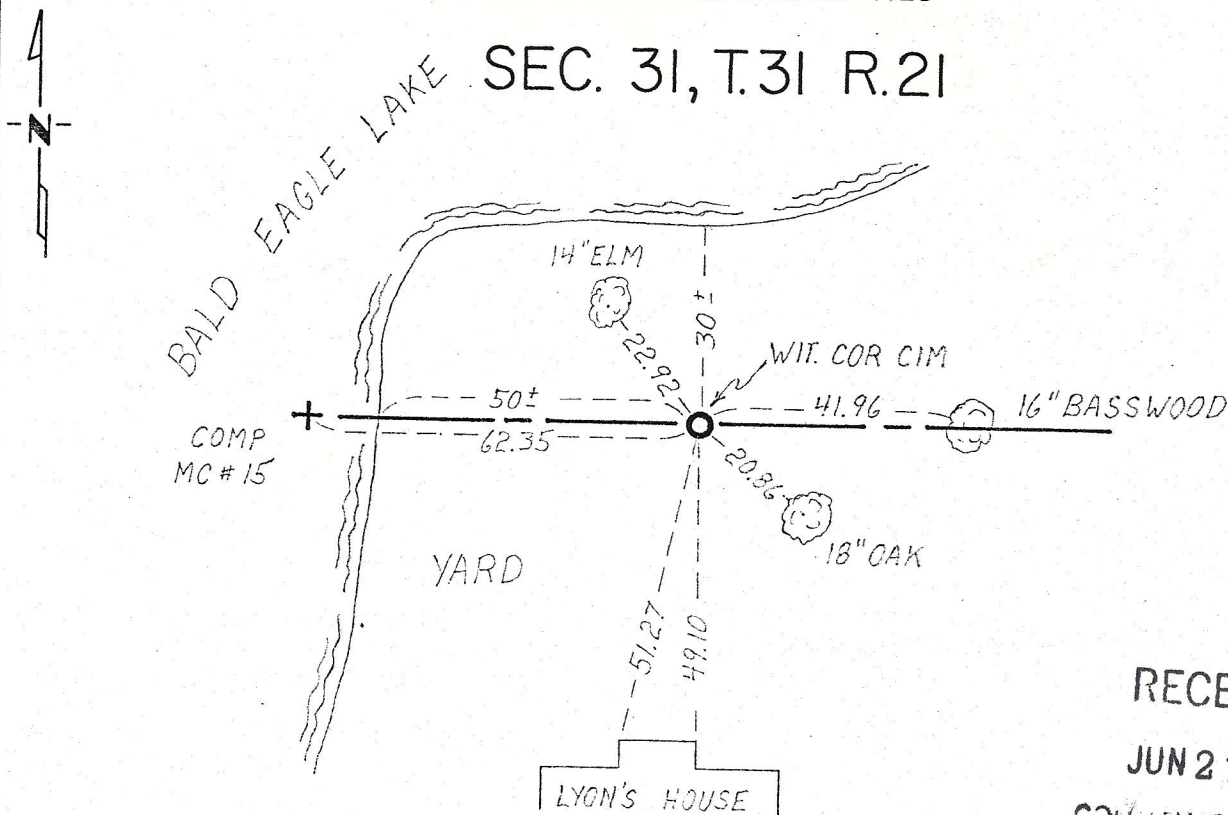
Meander Corner No. 15 ~~Corner of~~ Section 31, Township 31, Range 21, 4th P.M.

STATE OF MINNESOTA, County of Washington

At the corner location shown on the sketch:

- On Oct. 4, 1973 found an iron pipe set as a witness corner to Meander Corner No. 15.
DATE
 left monument as found, lowered monument, removed monument (explain)
- On Apr. 18, 1984 found ~~placed~~ a Ramsey County cast iron monument set as a witness corner to Meander Corner No. 15.
DATE

SKETCH OF REFERENCE TIES



SEC. 2, T.30 R.22

RECEIVED
 JUN 21 1984
 COUNTY OF RAMSEY
 SURVEYORS OFFICE

Statement of evidence relative to this corner location is on back of page.

I hereby certify that this document and the data contained herein was prepared by me or under my direct supervision.

Lawrence A. Nybeck 5-31-84
SIGNATURE DATE

Registration No. 12279

- Land Surveyor, Professional Engineer
- County Surveyor, County Engineer

OFFICE OF THE REGISTER OF DEEDS
 County of _____

I hereby certify that this document was filed in the Reg. of Deeds office at _____ .M. on the _____ day of _____ A.D., 19 _____

Register of Deeds _____
 By _____, Deputy

DOCUMENT NO. _____

Statement of Evidence: Meander corner No. 15, Section 31, T31 R21.

- 1847 August 10-16, H.A. Wiltze, Deputy Surveyor, original U.S. Public Land Survey ran the Third Correction Line. Noted a lake 56.5 chains west of the southeast corner, Section 31, and set a post at meander corner. Two bearing trees:
White Ash 8" S 80° E 35 links
Linden 18" N 75° E 63 links
- 1886 September 23, Plat of Shadyside No. 4 Bald Eagle, surveyed by Brinkenhoff & Phillips, was filed for record. Plat covers Govt. Lot 4, but the meander corner is not shown.
- 1901 January, Ramsey County Surveyor's Office records note one government tree found by Fitz.
- 1901 June, Ramsey County Surveyor's Office records note "set monument."
- 1906 December 20, Washington County Surveyor J.M. Oldham in Survey No. 279, Book 1, page 163, and fieldbook 5, pages 71 & 72, states: "M.C. No. 15 - find Govt. Linden NEly standing and plainly marked. Ramsey County Granite Mont. at corner."
- 1910 Ramsey County Surveyor's Office records note, "Mont moved East 12.35."
- 1940 February 13, Ramsey County Surveyor's Office records note "M.C. #7" (Washington County No. 15) "Placed iron 2-13-40 using ties. See Sec. in back of book."
- 1946 January, Ramsey County Surveyor's Office records as from section in back of book mentioned above "M.C. #7" (Washington County No. 15) "Reset & moved 50.00' East of witness cor. 1/46 H.A.W. & K.A. set nail." Total distance is 62.35 feet east from the meander corner.
- 1954 November, F. Kvidera made ties to granite monument as witness corner to Meander Corner No. 7 as located 62.35 feet east of meander corner (per telephone conversation March 1984).
- 1973 October 4, Washington County survey crew traversing for Correction Line survey found an iron pipe at the witness corner.
- 1974 May 6, Ramsey County Surveyor's Office records note "Found 1" solid 3' iron down 0.3' placed by Frank Kvidera. Replaced with C.I. May 6, 1974 flush with surface and tied. Monu. at top of hill."
- 1976 (approx) Don C. Hult-RLS 6617 on his section subdivision worksheet for Section 31 shows witness corner per Ramsey County records.
- 1982 June 21, Don W. Schmidt-RLS 10459 in Certificate of Survey for part of Govt. Lot 4, Section 31 shows irons in place along the south line (Washington County Surveys Record No. 02316 & 02317).
- 1984 April 18, Washington County survey crew using ties established by Ramsey County searched for a witness corner 12.35 feet east of the original stone. Nothing was found. This position falls right at the shoreline of lake. At 62.35 east of the original stone, the cast iron monument as set by Ramsey County in 1974 was found and in place of the iron pipe found in 1973 by Washington County survey crew.
- 1984 May, Following an analysis of the record data compared to field measurements the location of the cast iron monument as set by Ramsey County as a witness corner distant 62.35 feet east of Meander Corner No. 15 is accepted as being correct.
The position of Meander Corner No. 15 can be determined by the Ramsey County witness corner. Recorded information and field evidence provide a direct chain of events back to the original P.L.S. corner.