

# CERTIFICATE OF LOCATION OF GOVERNMENT CORNER

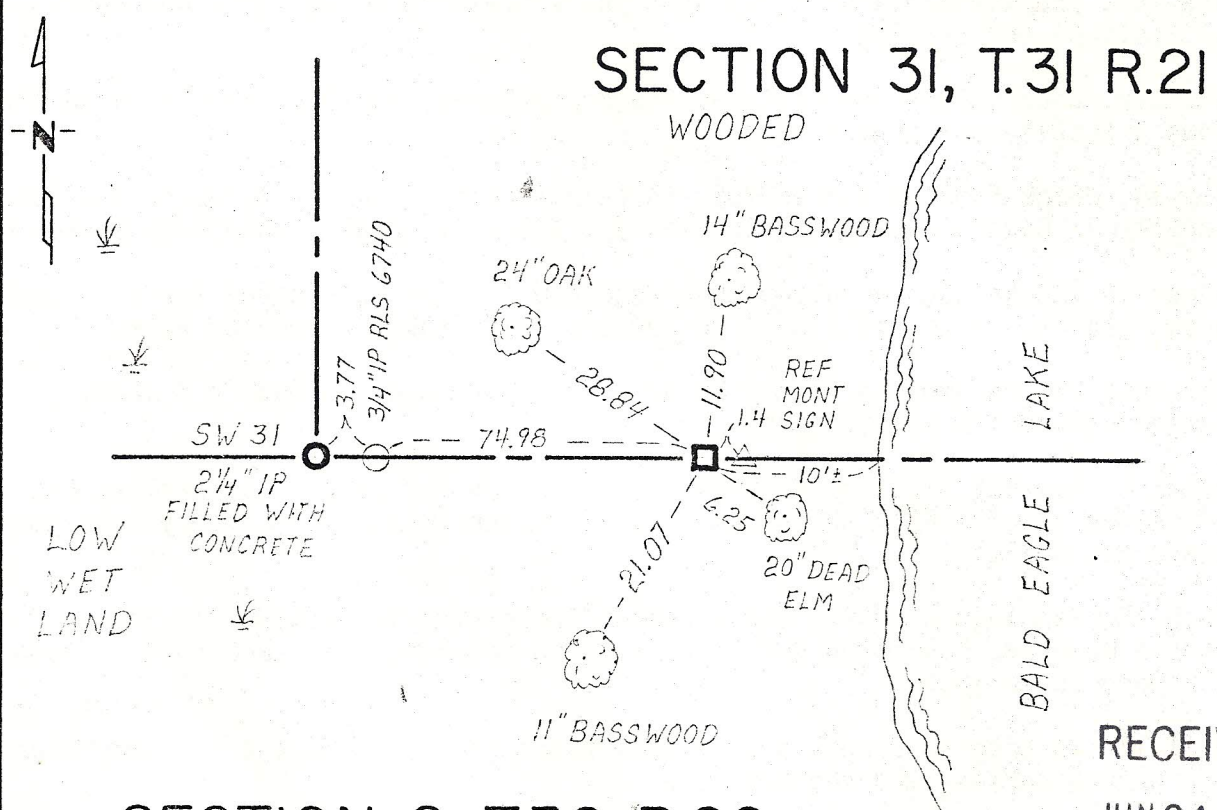
Meander Corner No. 13 on the south line of ~~Corner~~ Section 31, Township 31, Range 21, 4th P.M.

STATE OF MINNESOTA, County of Washington

At the corner location shown on the sketch:

- On Sept. 25, 1973 found a 8 inch by 8 inch granite stone (with drill hole) flush.  
DATE
- left monument as found,  lowered monument,  removed monument (explain)
- On April 17, 1984 ~~placed~~ reset 8 inch by 8 inch granite monument upright,  
DATE flush with ground surface.

## SKETCH OF REFERENCE TIES



### SECTION 2, T.30 R.22

RECEIVED  
JUN 21 1984

COUNTY OF RAMSEY  
SURVEYORS OFFICE

FACE TIES HAVE NAIL AND DISC STAMPED WASH. CO. SURVEYOR

Statement of evidence relative to this corner location is on back of page.

I hereby certify that this document and the data contained herein was prepared by me or under my direct supervision.

Lawrence A. Nybeck 5-31-84  
SIGNATURE DATE

Registration No. 12279

Land Surveyor,  Professional Engineer  
 County Surveyor,  County Engineer

OFFICE OF THE REGISTER OF DEEDS  
County of \_\_\_\_\_

I hereby certify that this document was filed in the Reg. of Deeds office at \_\_\_\_\_ .M. on the \_\_\_\_\_ day of \_\_\_\_\_ A.D., 19 \_\_\_\_\_

Register of Deeds \_\_\_\_\_  
By \_\_\_\_\_, Deputy

DOCUMENT NO. \_\_\_\_\_

Statement of Evidence: Meander Corner No. 13, Section 31, T31 R21.

- 1847 August 10-16, H.A. Wiltze, Deputy Surveyor, original U.S. Public Land Survey, ran the Third Correction Line. Set a post at Meander Corner on west side of lake, distance of 81.80 chains west of the southeast corner of Section 31 and recorded two bearing trees:  
W. Ash 6" N 30° E .8  
Lind 6" S 25° W .7
- 1902 February 4, Ramsey County survey records note: "In establishing Meander Corner No. 14" (No. 13, Washington County), "Ran a straight line from Meander Corner No. 7" (No. 15, Washington County) "to the NW Corner Section 2" (T30, R.22) "and fixed Meander Corner No. 14" (No. 13, Washington County) "Government distance E. from N.W. Corner Section 2. No Government trees, set Mont. Dec. 13, 1902."
- 1906 December 20, Washington County Surveyor J.M. Oldham in Survey No. 279, Book 1 page 163, and fieldbook 5, pages 71 & 72, states: "M.C. No. 13 - one Govt. B.T. (stump) and Granite Mont."
- 1917 December, County Surveyor Lewis W. Clarke in Survey No. 311, Book 1, page 186 shows a granite monument inplace.
- 1960 July 15, James F. Simonet-RLS 705, in Certificate of Survey for Lorraine Silk property in Government Lot 5, Section 31, T31 R21, shows monument in place.
- 1964 August 13, Anoka County survey crew recorded finding Washington County 6 inch square granite, with drill hole in center. Made three reference ties.
- 1973 September 25, Washington County survey crew found stone 8 inch x 8 inch, granite with drill hole, flush.
- 1977 Ernest G. Rud-RLS 9808, in Certificate of Survey for part of Government Lot 5, Section 31, T31 R21, shows symbol  $\square$  in place (Washington County Surveyors Record No. 00752).
- 1984 March 15, Washington County survey crew, traversing in Section 31, found granite monument has moved 0.7 feet north in checking ties, and note, "stone is tipped to north."
- 1984 April 17, Washington County survey crew reset granite monument upright, flush with ground surface and checked ties.