

CERTIFICATE OF LOCATION OF GOVERNMENT CORNER

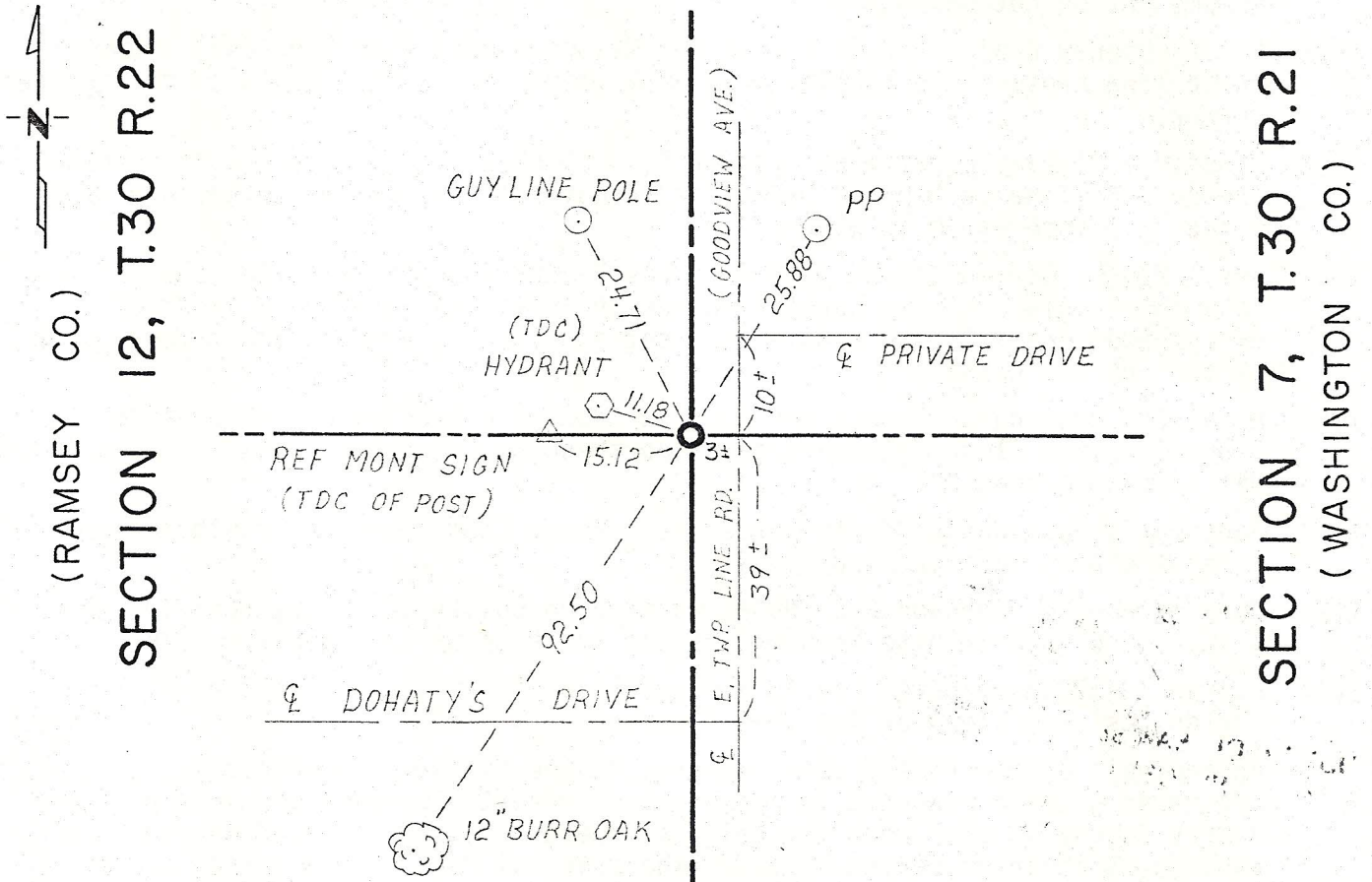
West Quarter _____ Corner of Section 7, Township 30, Range 21, 4th P.M.

STATE OF MINNESOTA, County of Washington

At the corner location shown on the sketch:

- On July 8, 1981 found the reference ties but not the stone monument removed by construction.
 left monument as found, lowered monument, removed monument (explain)
- On June 3, 1982 placed a Washington County cast iron monument from the reference ties of the stone monument. Top of CIM is 0.2 foot below the surface.

SKETCH OF REFERENCE TIES



FACE TIES ARE NAIL AND DISC STAMPED WASH. CO. SURVEYOR

Statement of evidence relative to this corner location is on back of page.

I hereby certify that this document and the data contained herein was prepared by me or under my direct supervision.

Lawrence S. Nybeck 6-18-82
SIGNATURE DATE

Registration No. 12279

- Land Surveyor, Professional Engineer
- County Surveyor, County Engineer

OFFICE OF THE REGISTER OF DEEDS
County of _____

I hereby certify that this document was filed in the Reg. of Deeds office at _____ .M. on the _____ day of _____ A.D., 19 _____

Register of Deeds _____

By _____, Deputy

DOCUMENT NO. _____

Statement of Evidence: Quarter corner common to Sections 7, T30 R21 and Section 12
T30 R22.

- 1847 Original U.S. Public Land Survey set post and recorded two bearing trees:
Wht. Oak 24" N 42° W 47 (31.02 feet)
Wht. Oak 14" S 58° E 26 (17.16 feet)
- 1900 Mpls, St. Paul & Saulte Ste. Marie Railway Co. right of way map shows railroad centerline crosses section line at a point 749 feet north of the quarter corner. No monumentation shown.
- 1905 August, Ramsey County Records Book N, page 21, record: "At $\frac{1}{4}$ corner on E Side of Section 12 found Govt. Witness tree W.O. 39" marked $\frac{1}{4}$ S B.T. At a point for corner found Iron Spike and directly below about one foot of old $\frac{1}{4}$ stake". Sketch shows symbol \square and notes: Granite.
- 1916 Northern Pacific Railway Co. right of way map shows railroad centerline crosses section line at a point 1507.8 feet south of the quarter corner. Type of monumentation not shown.
- 1925 Ramsey County Project 25-51 survey for Wildwood Road (now T.H. 244) shows centerline crosses the section line at a point 1393.1 feet south of the quarter corner.
- 1936 Minnesota Highway Department map for T.H. 96 shows highway centerline crosses the section line at a point 1204.4 feet south of the quarter corner and notes 6 inch x 6 inch stone in place.
- 1948 April 21, L. Norton Clarke in Surveyor's Record Book 3, page 118, shows Stone Monument in place at the quarter corner and notes the southerly right-of-way of the Soo Line Railroad crosses the section line at a point 693.7 feet north of the quarter corner.
- 1969 April 25, Washington County survey crew found a 6 inch by 6 inch Granite Stone in place flush with surface of north-south County Line Road. Established six reference ties.
- 1972 January 7, Washington County survey crew found Stone monument flush and checked reference ties made previously.
- 1974 June 3, Paul A. Johnson-RLS 10938, Washington County Surveyor, verified the 6 inch by 6 inch Granite Monument as the position of this quarter corner.
- 1979 August 13-17, Washington County Surveyor's Office traversed Section 7. Fieldnotes show stone at the West $\frac{1}{4}$ corner.
- An analysis of the record data compared to the field measurements indicates the found granite monument is in agreement with the granite monument set by Ramsey County in 1905 when the original quarter stake was found providing a continuous chain of perpetuation of the original Public Land Survey corner.
- 1981 June 30, Washington County Surveyor's Office was notified by adjacent property owner that the stone monument had possibly been removed by road construction. On July 8, Washington County survey crew found the reference ties inplace but the stone monument removed.
- 1982 June 3, Washington County Surveyor's Office set a Washington County cast iron monument in the same location as the 6 inch by 6 inch granite monument from the 1974 reference ties. The top of the cast iron monument is 0.2 feet below the road surface. Placed new reference ties.