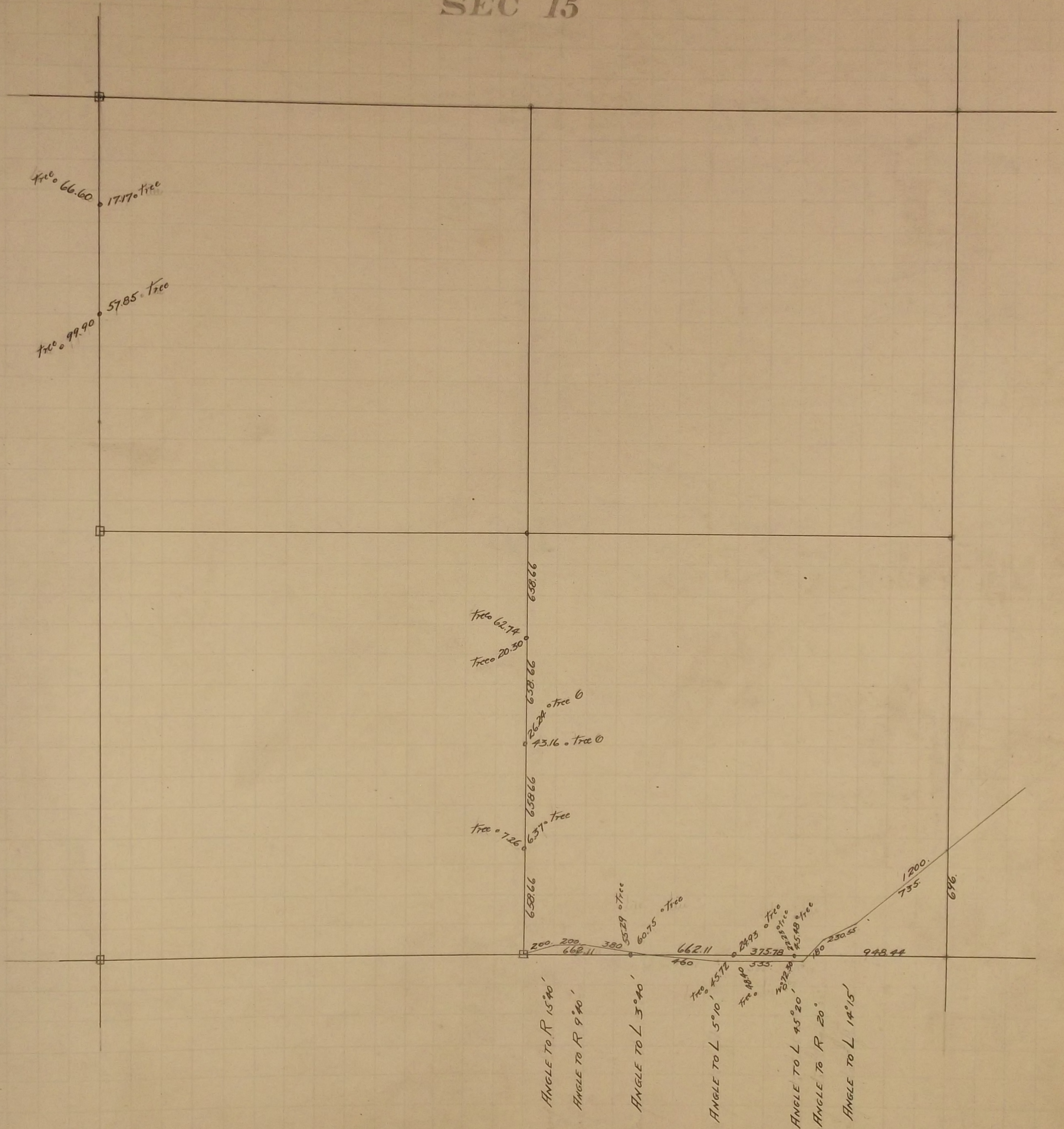


See page 63

SEC 15



In Establishing the North West Corner of Section 15
Fixed Corner and tied it. May 17-1896 Found our old Government witness stump
Set Mont. Oct. 28. 1897

In Establishing the $\frac{1}{4}$ Corner between 15 and 16 Found our old Gov. witness stump
Fixed Corner and set Mont. Sept. 30-1895

In Establishing the South West Corner of Section 15 see Sec 16 Sept 30 1895

In Establishing the $\frac{1}{4}$ corner between Sections 15 and 22 Found our Gov. witness tree
and our Gov. stump Fixed corner tied it and set Mont. Sept 30-1895

In Establishing the South East Corner of Section 15 Found our Gov. witness stump
and also found old stake at Section Corner Fixed Corner and tied it May 1896
Set Mont. May 28-1897

In Establishing the North East Corner of Section 15 Found our Gov. witness tree and
our stump Fixed Corner and tied it Feb. 3-1897 Set Mont. May 28-1897

In Establishing the $\frac{1}{4}$ Corner between Sections 10 and 15 Ran straight line and fixed
 $\frac{1}{4}$ corner at 2644.90 Gov. witness tree gone Feb. 4-1897
Set Mont. Aug 1900

Made Survey of Manomin Road Feb. 1-1897 Page 65

Fixed the center of Sec 15 by Intersection March 3 1897 Set Mont. Aug 1900

In Establishing the $\frac{1}{4}$ Corner between Sections 14 and 15 Found our Gov. witness stump
Fixed Corner and set Mont. May-1897