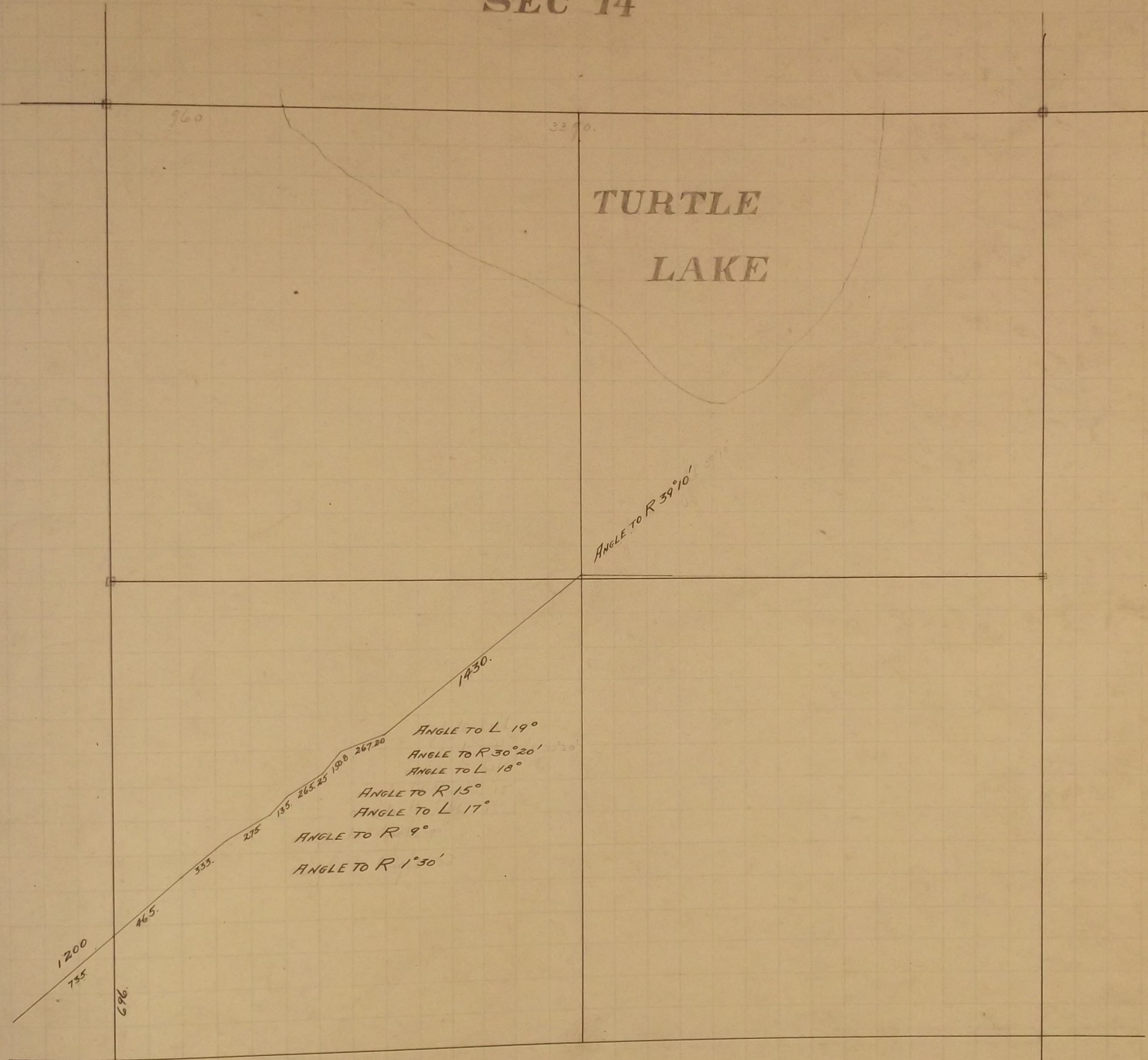


SEC 14



TURTLE
LAKE

ANGLE TO R 39°10'

1430.

ANGLE TO L 19°

ANGLE TO R 30°20'

ANGLE TO L 18°

ANGLE TO R 15°

ANGLE TO L 17°

ANGLE TO R 9°

ANGLE TO R 1°30'

960

3290.

1200

735

696

465.

333.

275

135.

265.25

130.0

267.20

In Establishing the North East Corner of Section 14 Measured North from $\frac{1}{4}$ Corner found between Sections 13 & 14 2640 which checked the line of fence running West. Government witness trees gone Fixed corner tied it and set Mount July 17-1896.

In Establishing the $\frac{1}{4}$ Corner between Sections 13 and 14 Found old stake at $\frac{1}{4}$ Corner Government witness trees gone Re tied it and set Mount July 17-1896

In Establishing the South West Corner of Section 14 Found one old Government witness stump and also found old stake at Section corner Fixed corner and tied it May 1896 Set Mount May 28-1897

In Establishing the $\frac{1}{4}$ Corner between Sections 14 and 15 Set Mount May 28-1897

Made Survey of Manomin Road Feb 1-1897 Page 59

In Establishing the North West Corner of Section 14 Found both Government witness trees fixed corner and tied it Feb 3-1897 Set Mount May 28-1897

Meadow Corner No 12 was fixed May 7-1897 found one Government witness stump Set Mount May 28-1897

The South East Corner of Section 14 was fixed by using Government distance from Meadow Corner No 9 Set Mount Oct 28-1897

The $\frac{1}{4}$ Corner between Sections 14 and 23 was fixed at half way between Section Corner Government witness trees gone Set Mount Oct 28-1897

Fixed the Center of Section 14 by Intersection and set Mount Aug-1900

Meadow Corner No 11 was fixed in Jan. 1900 Set Mount Sept. 1900