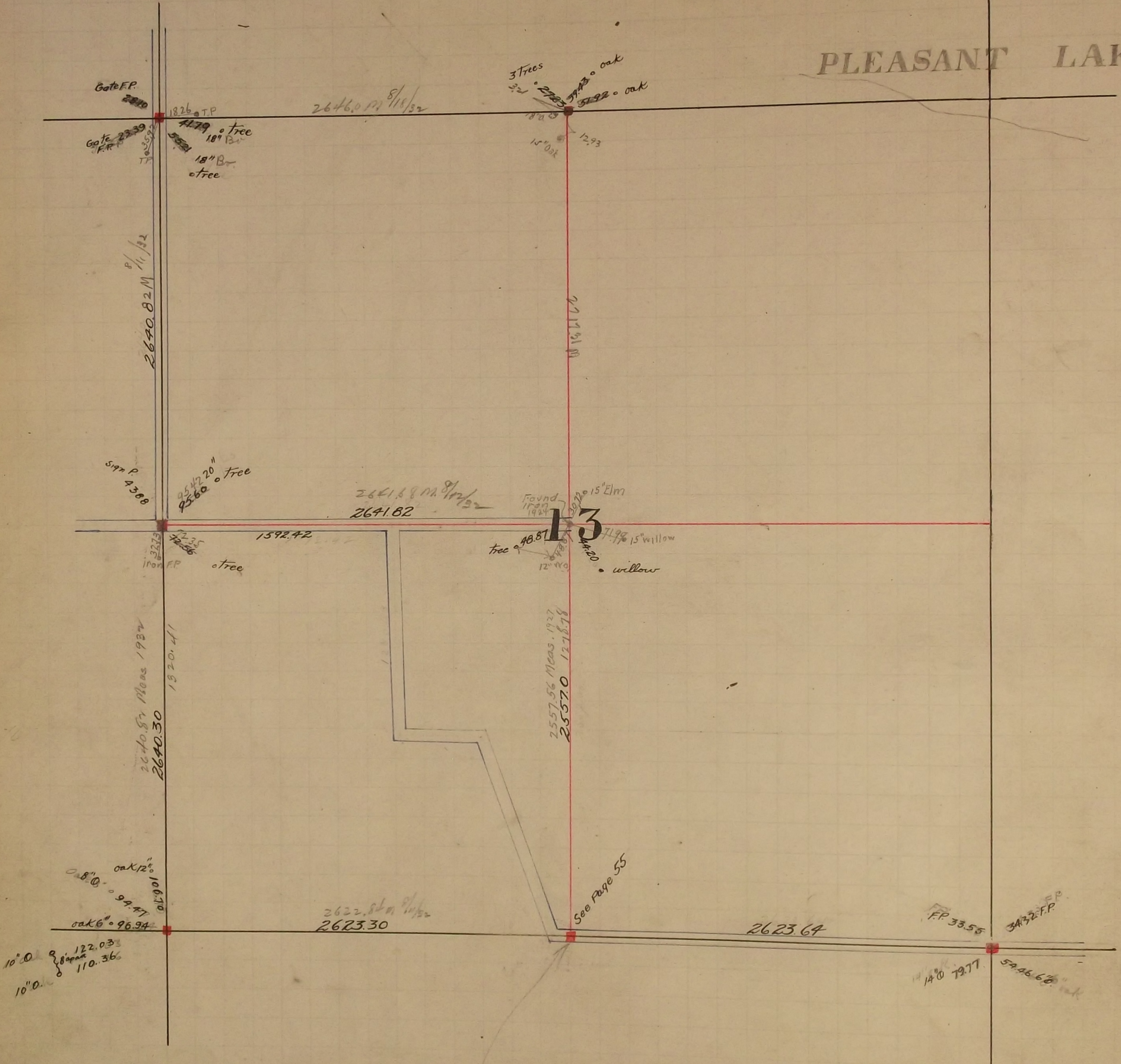


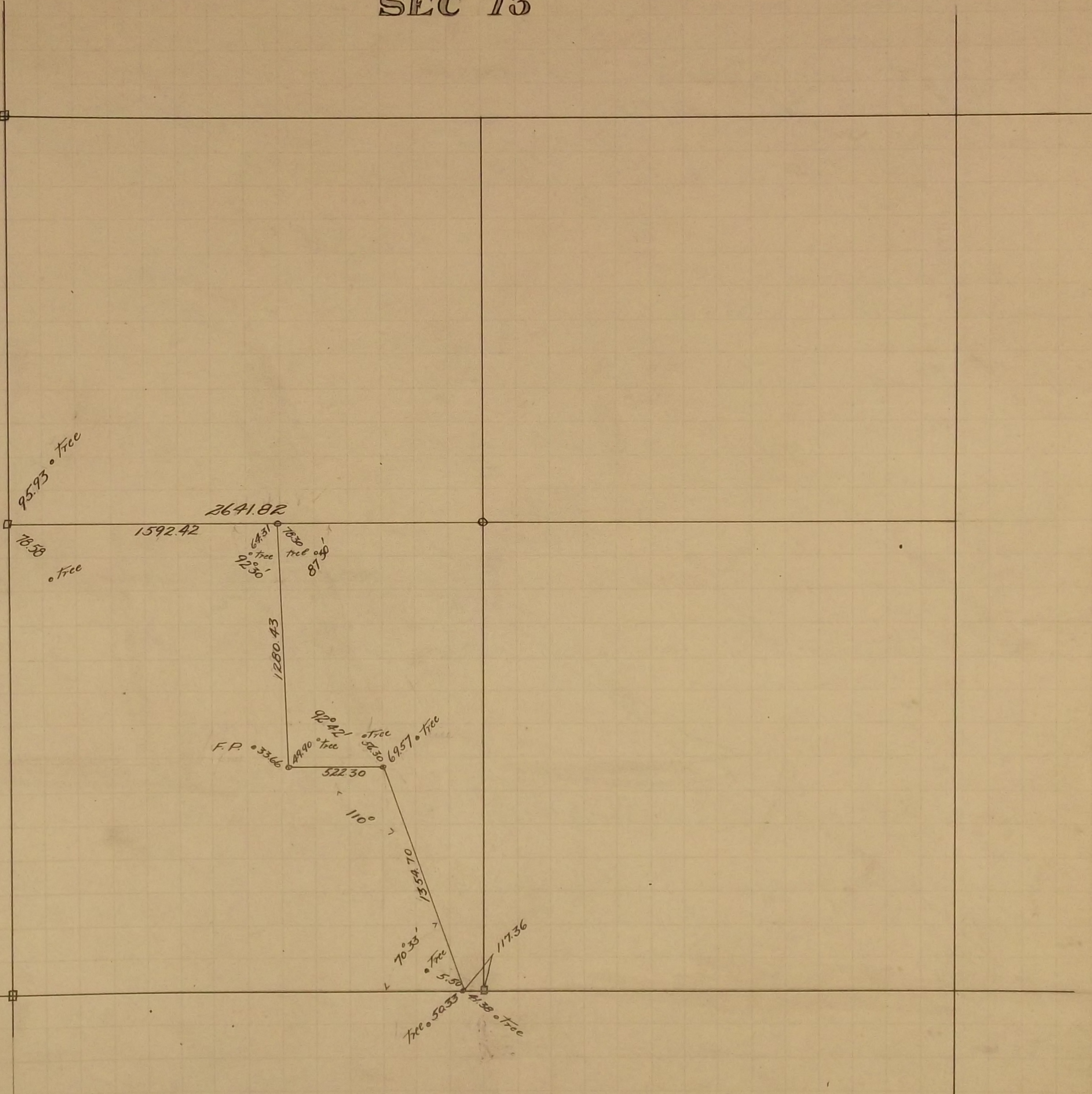
PLEASANT LAKE



tree • 5.50 Ties to $\frac{1}{4}$ Cor. Between Sec. 13 & 24
Mont.

44.33
• tree

SEC 13



In Establishing the South East Corner of Section 13 Found Old stake at Section Cor.
Government witness trees gone Retired it and set Mont. Apr. 26-1895

In Establishing the $\frac{1}{4}$ Corner between Sections 13 and 24 Found our Government witness
tree and our stump Fixed corner Retired it and set Mont. July 1896

Made survey of Road through Sec. 13 July 18 1896 See page 55

In Establishing the $\frac{1}{4}$ Corner between Sections 13 & 14 Found old stake at $\frac{1}{4}$ Corner
Government witness trees gone Retired it and set Mont. July 17-1896

For North West Corner of Section 13 see Section 11 page 44 July 17-1896
Set Mont.

The $\frac{1}{4}$ Corner between Sections 12 and 13 was fixed from two old Government witness stumps
also found old stake at corner May 11-1897 Set Mont. Aug. 9-1897

The South West Corner of Section 13 was fixed by using Meander Course No. 9
measured Government distance North Set Mont. Oct. 28-1897