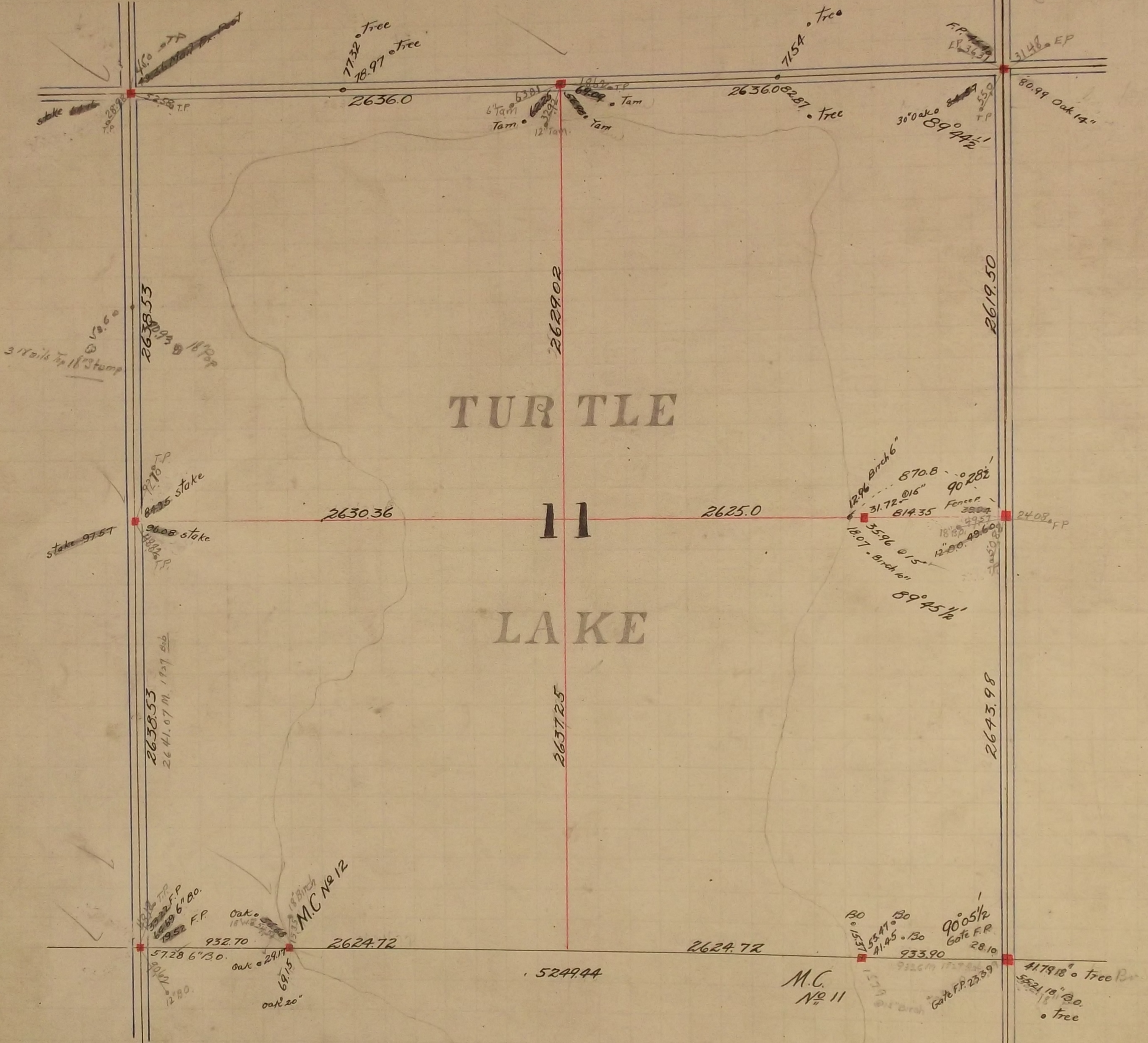


TUR TLE

LAKE



In Establishing the North East Corner of Section 11 our Government witness tree standing Fixed Corner and tied it July 20 - 1896 Set Mount Aug 9 - 1897

In Establishing the $\frac{1}{4}$ Corner between Sections 11 and 12 found old stake no Government witness trees Fixed Corner tied it and Set Mount July 20 - 1896

In Establishing the South East Corner of Section 11 Measured North from $\frac{1}{4}$ corner found between sections 13 & 14 2640 which checked the line of fence running West. Government witness trees gone Fixed Corner tied it and Set Mount July 17 - 1896

In Establishing the South West Corner of Section 11 Found both Government witness trees fixed corner and tied it Feb 3 - 1897 Set Mount May 28 - 1897

Meander Corner No 12 was fixed May 7 1897 found our Government witness stump Set Mount May 28 - 1897

In Establishing the $\frac{1}{4}$ Corner between Sections 2 and 11 Run straight line from corner to corner and fixed $\frac{1}{4}$ corner half way. Government witness trees gone March 15 - '98 Set Mount July 11 - 1898

In Establishing the North West Corner of Section 11 prorated North South East & West and fixed Section Corner Government witness trees gone fixed corner and tied it Set Mount July 11 - 1898 March 16 - 1898

In Establishing the $\frac{1}{4}$ Corner between Section 10 and 11 Run straight line from corner to corner and fixed $\frac{1}{4}$ corner $\frac{1}{2}$ way Government witness trees gone March 14 - 1898 Set Mount Aug 1900

Meander Corner No 11 was fixed Jan 1900

Set Mount Sept. 1900