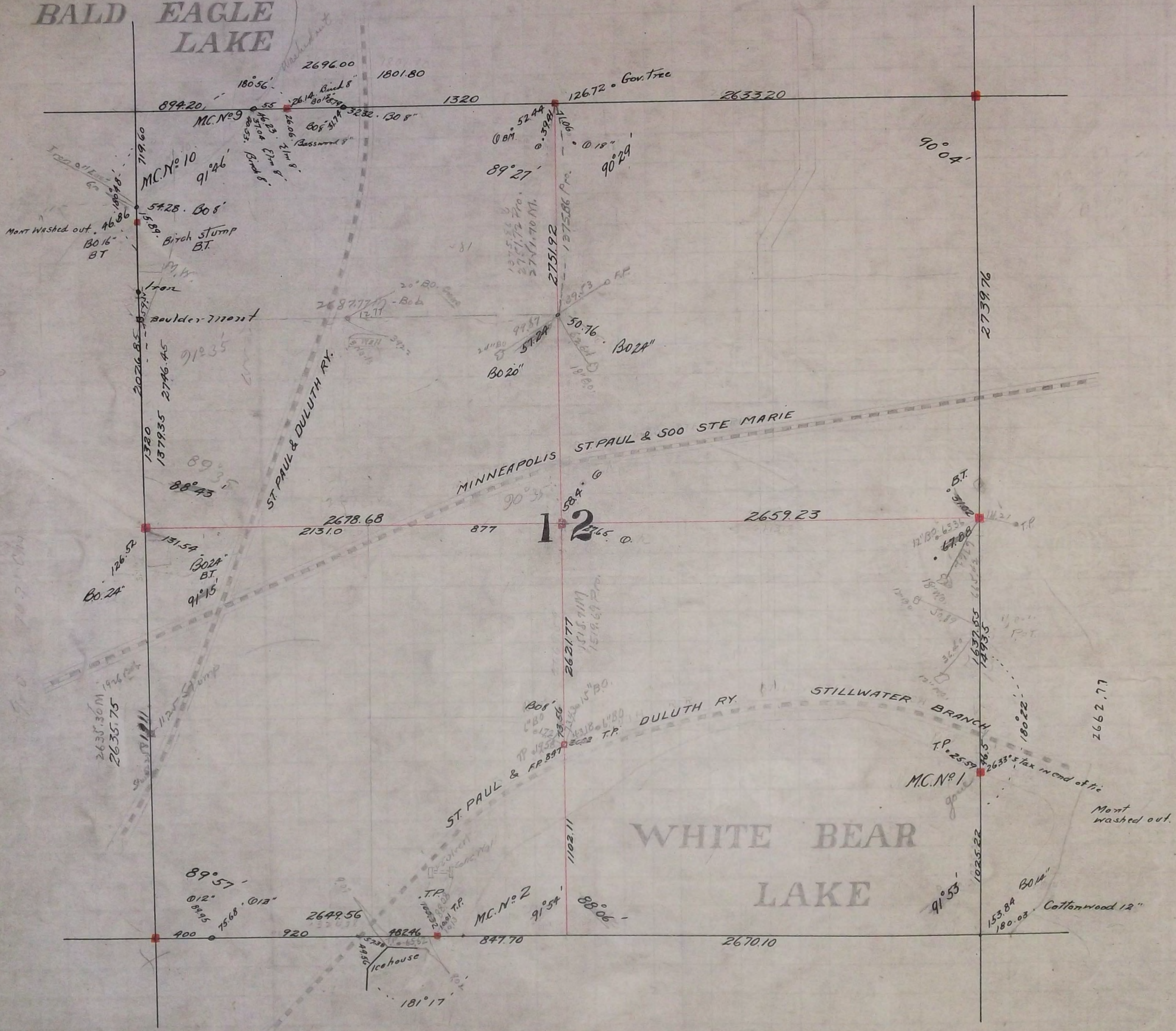


BALD EAGLE LAKE



Note: Center of section and E 1/4 corner were moved in Aug. 1905, See Survey Book "N," page 21 from original location as staked on page 49 of this book.

In Establishing Meander Corner No. 9 Ran a line N. from $\frac{1}{4}$ corner between Sections 1 and 12 using stakes found in Shady Side Add. Government distance and fixed Meander Corner No. 9 no Government trees Set Mont. 55' E of Meander Corner Feb. 23 - 1902

The $\frac{1}{4}$ corner between Sections 1 and 12 Found one Government tree standing and stake set by Fitz tied it Oct 5 - 1897 Set Mont. Nov. 15 - 1901

The N.E. corner of Section 12 was fixed from one Government stump nothing to tie to Oct. 8 - 1897 Set Monument Oct. 1897

The $\frac{1}{4}$ corner on East side of Section 12 Could not find any trees or stakes probed and fixed corner and tied it Oct. 7 - 1897 Set Monument Oct. 1897

Meander Corner No. 1 was fixed from one Government stump Oct. 7 - 1897 Set Monument Oct. 1897

The South West Corner of Section 12 was fixed from stakes found in White Bear Old Government trees were standing when White Bear was surveyed April 14 1899 Set Mont. Nov. 28 - 1901

Meander Corner No. 2 was fixed from stakes found in White Bear April 14 1899 Set Mont. Nov. 28 - 1901

In Establishing the $\frac{1}{4}$ corner between Sections 11 and 12 Found one Government witness tree and also found old stake at $\frac{1}{4}$ corner and set Monument Nov. 8 - 1901

In Establishing Meander Corner No. 10 Found one Government witness tree and one Government witness stump Nov. 1 - 1901 Set Mont 12' South of Meander Corner Nov. 16 - 1901

Fixed the center of Section 12 by Intersection Jan 16 - 1903 Set Mont. Dec. 22 - 03.