



SNEED

2648.72

34 F. Post

TP. 6174
59.33
TP

119.42 TP

85° 57'
4294
2843
TP

post
4899 db1, R2
62.03 Box Elder 6"
post

2635.78

2638.60
6.69
1319.30
17.21

6" oak
16" oak

2644.90

1321.17
2642.35
WHITE BEAR ROAD

2633.01

2641.07

FP 35.04

3

5

2638.5

5531

4307 TP
37.61 T.P.
25.15 Tree

3827 FP
45.31 Tree
71.82 Tree
45.28 Tree
34.79 Tree

51.47
64.25.88
Tree

27.06 Gov witness tree

2638.60
1319.37

21.49 1906"
862 scrub

LAKE
263479

TP# 713

40.58
40.43 T.P# 714

Gov. stump
130 North 83° W

5379 Tree
5135 Tree
TP

2633.42

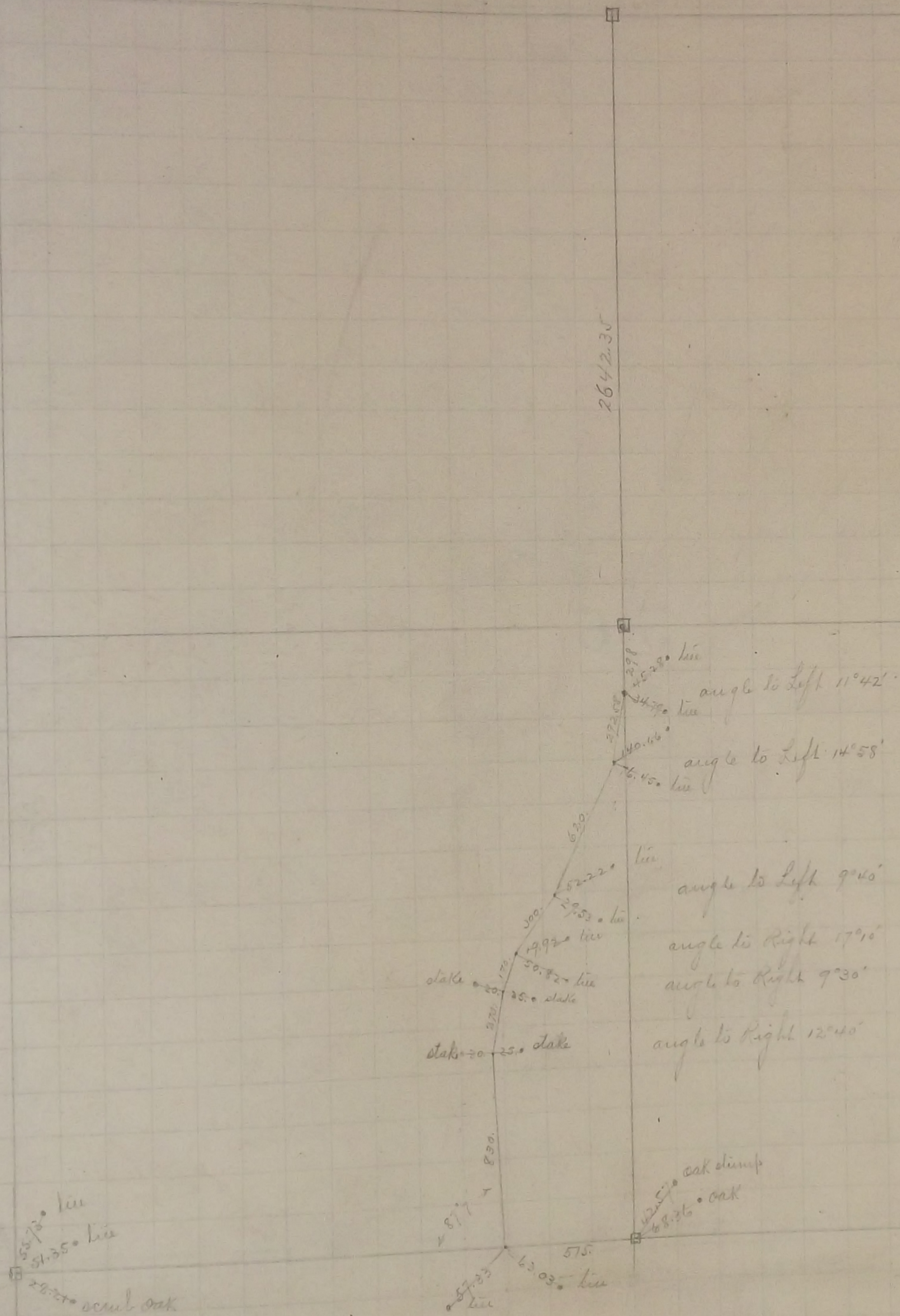
1280
575
Gov. stump
80. N 12° E

117.78
34.54 T.P.
TP

2636.35

65.95
66.96
TP

SEC 35



In Establishing the North West Corner of Section 35 Found old Boulder Monument on North side of Road 33 ft. North from Section Corner and also found old stake at Section Corner Government witness trees gone Tied it and set Monument Aug. 1896

In Establishing the $\frac{1}{4}$ Corner between Section 26 and 35 found two Boulder Monuments one at the North West Corner and one at the North East Corner of White Bear Road and Wildwood Road and also found old stake at $\frac{1}{4}$ Corner which checked the two Monuments Government witness trees gone Set Monument at $\frac{1}{4}$ Corner and tied it Aug. 1896

In Establishing the South West Corner of Section 35 found one Government witness stump fixed corner and set Monument Aug. 1896

In Establishing the $\frac{1}{4}$ Corner between Sections 35 Town 30 Range 22 and Section 2 Town 29 Range 22, found one Government witness stump fixed corner and set Monument Aug. 1896

In Establishing the $\frac{1}{4}$ Corner between Sections 35 and 36 found one Government witness tree, fixed corner tied it and set Monument Sept. 1896

In Establishing the $\frac{1}{4}$ Corner between Sections 34 and 35. Measured the distance between the North West Corner and the South West Corner of Section 35 5277.20 and fixed $\frac{1}{4}$ corner at 2638.60 Government witness trees gone Sept. 1896

Fixed the Center of Section 35 tied it and set Monument Sept. 1896

In Establishing the South East Corner of Section 36

Set Monument July 20. 1898

In Establishing the North East Corner of Section 36 Found old stake 33 ft. N. of fence Set Monument July 20. 1898