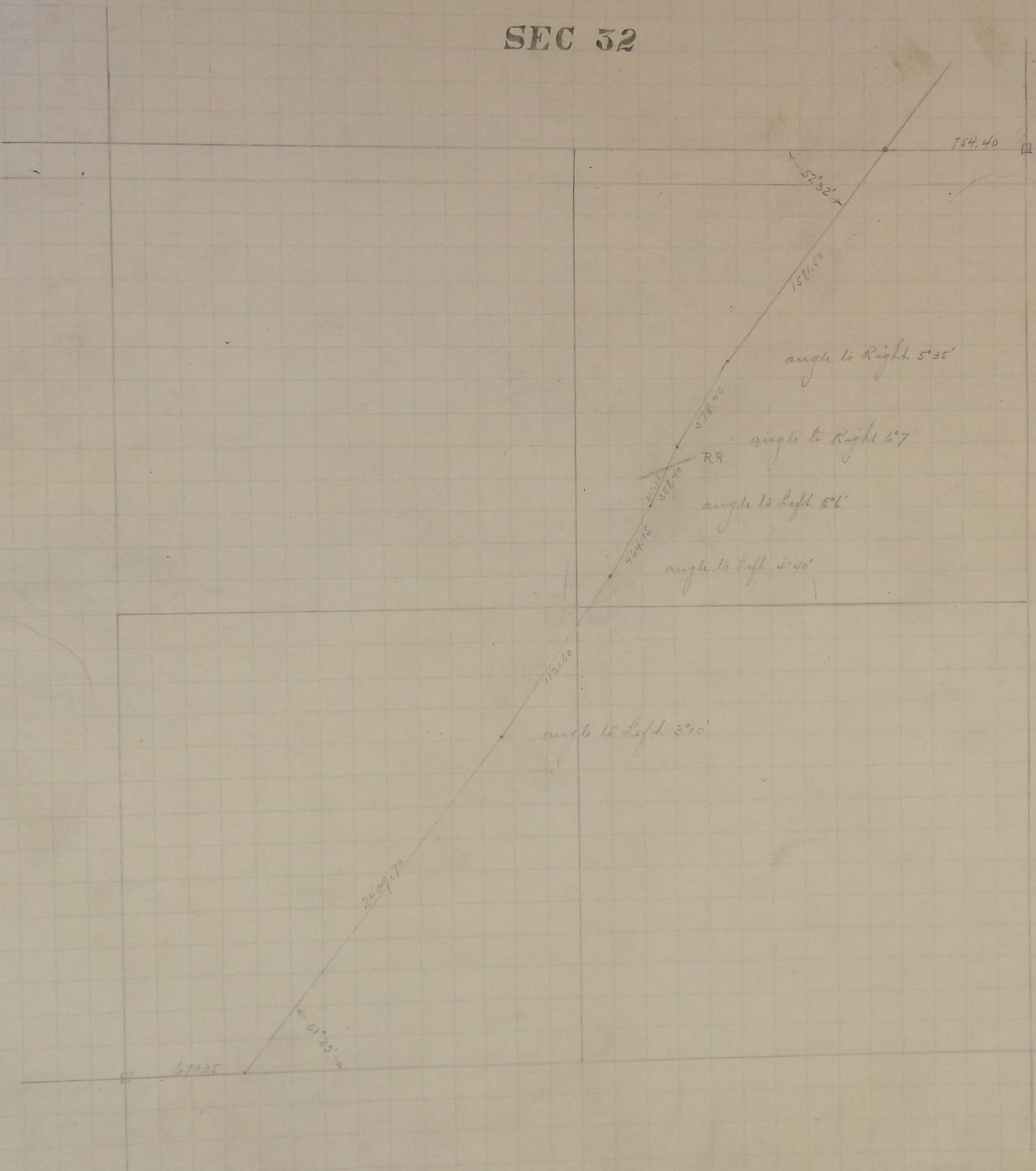


SEC 32



In Establishing the $\frac{1}{4}$ corner between Sections 29 and 32. found old original stake
Government witness gone Retied it and set Monument

1895

In Establishing the North East Corner of Section 32. Measured East from $\frac{1}{4}$ corner between
Sections 29 and 32 - 2619.80 which checked the line of fence running South, fixed corner
Tied it and set Monument

1895

In Establishing the South West Corner of Section 32 found old stake at Section Corner
which checked the line of fence running West. Retied it and set Monument
Government witness trees gone.

1895

In Establishing the South East corner of Section 32 found one Government witness
stump and also found old stake at Section corner. Retied it and set Monument

1895

In Establishing the $\frac{1}{4}$ corner between Section 32 T 30 R. 22 and Section 5 T 29 R 22
Set Monument 1895

Made Survey of Little Canada Road through Sec. 32 Feb. 27 1896 see Page 131

The North West corner of Section 31 Found Iron stake at Section corner
Government witness trees gone. tied it and set Monument Aug. 1895

In Establishing the $\frac{1}{4}$ corner between Sections 32 and 33, found one Government tree
standing and the old stump hole of other Government tree Nov. 5 - 1900
Set Mont. Nov. 21 - 1900

In Establishing the $\frac{1}{4}$ corner between Sections 31 and 32, ran straight line N and S
and fixed $\frac{1}{4}$ corner $\frac{1}{2}$ way

Fixed the center of Sec. 32. by Intersection and set Mont.
Dec. 31 - 1900