

Nail in 10" Oak

4570 - 05'

2615.57

1533 85  
Dartz  
Nail in 16" Oak

1308'  
68.96

2617.65

28.87  
scrub 0

53.69  
B.O. 12"

W.H.C.  
Jan. 1924

48.85  
35.5  
06'  
Nail in 24" Oak  
89° 42 1/2'

Nail in T.P. C

60.25  
60.02  
0 Nail in 16" Oak  
0 61

Note:  
Morr. about 8" below  
ground surface  
W.H.C. Jan. 1924.

2637.30  
2657.30

2613.32

2647.50

W.H.C.  
Jan. 1924

89° 49'

90° 13 1/2'

2613.10

89° 49 1/2'

2 2

no ties 90° 10 1/2'

2613.30

30.14  
tam

30.48 - tam.

51.8  
41.78  
0 10'  
Nail in 10" Oak

47.59  
29.8  
0 10'  
Nail in Oak

RICE  
LAKE

2614.68

2622.98

MINNEAPOLIS BRANCH

ST. PAUL & DULUTH RY

ST. PAUL & DULUTH RY

GOOSE  
LAKE

89° 58'

732.80

2631.20

Office  
1029

Office  
46.07

43.13  
no.

2629.44 1608.86

Office  
84.50  
587.30

Office  
9.65 FP

2629.44  
50.27

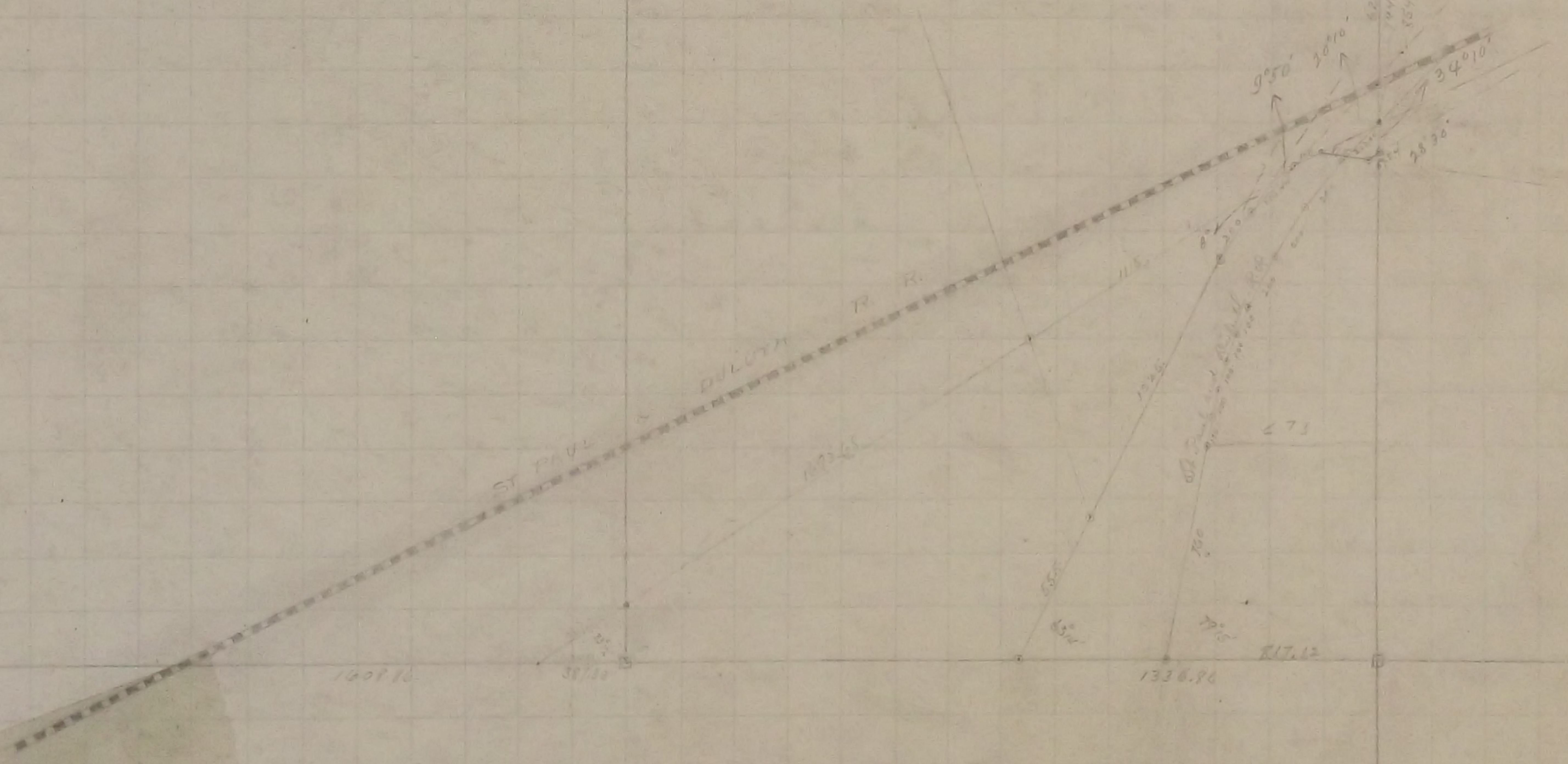
57.29 62.35

Office  
73.92

Office  
54.43

# SEC 22

Handwritten calculation:  
 $\begin{array}{r} 2.612 \\ 1.717 \\ 2.359 \\ \hline 6.688 \end{array}$



Handwritten notes at the bottom: "163 1-53"

Made Survey of Road in Section 22 Oct. 1896 see Page 91

Found Oak stake at  $\frac{1}{4}$  corner between Sections 21 and 22 No Government witness trees.  
Retied it and Set Monument Oct. 1896

Found old stake at the North West corner of Section 22 No Government witness trees  
Retied it and Set monument Oct. 7-1896

In Establishing the  $\frac{1}{4}$  corner between Sections 15 and 22 found one Government witness  
tree and also found stake at  $\frac{1}{4}$  corner and Set Monument Retied it Oct 7-1896

In Establishing the  $\frac{1}{4}$  corner between Sections 22 and 23 found old Tamarack stake and  
two witness stumps Retied it and Set Monument Oct. 3. - 1896

In Establishing the  $\frac{1}{4}$  corner between Sections 22 and 27 Ran East on straight line  
Government distance and fixed  $\frac{1}{4}$  corner Government witness trees gone Feb-1900  
Set Mont.

In Establishing the South East corner of Section 22 Ran East on straight line  
Government distance and fixed Section corner Government trees gone Feb. 1900  
Set Mont.

In Establishing the South West corner of Section 22 Ran East on straight line  
Government distance and fixed Section corner found remains of old God Stump. Oct. 1900  
Set Mont. June 1900

Fixed the Centre of Section 22 by Intersection and set Monument June. 1900

In Establishing the N.E. corner of Section 22 found old stake at Section corner  
which was fixed when Government trees were standing tied it and  
Set Monument June. 1900