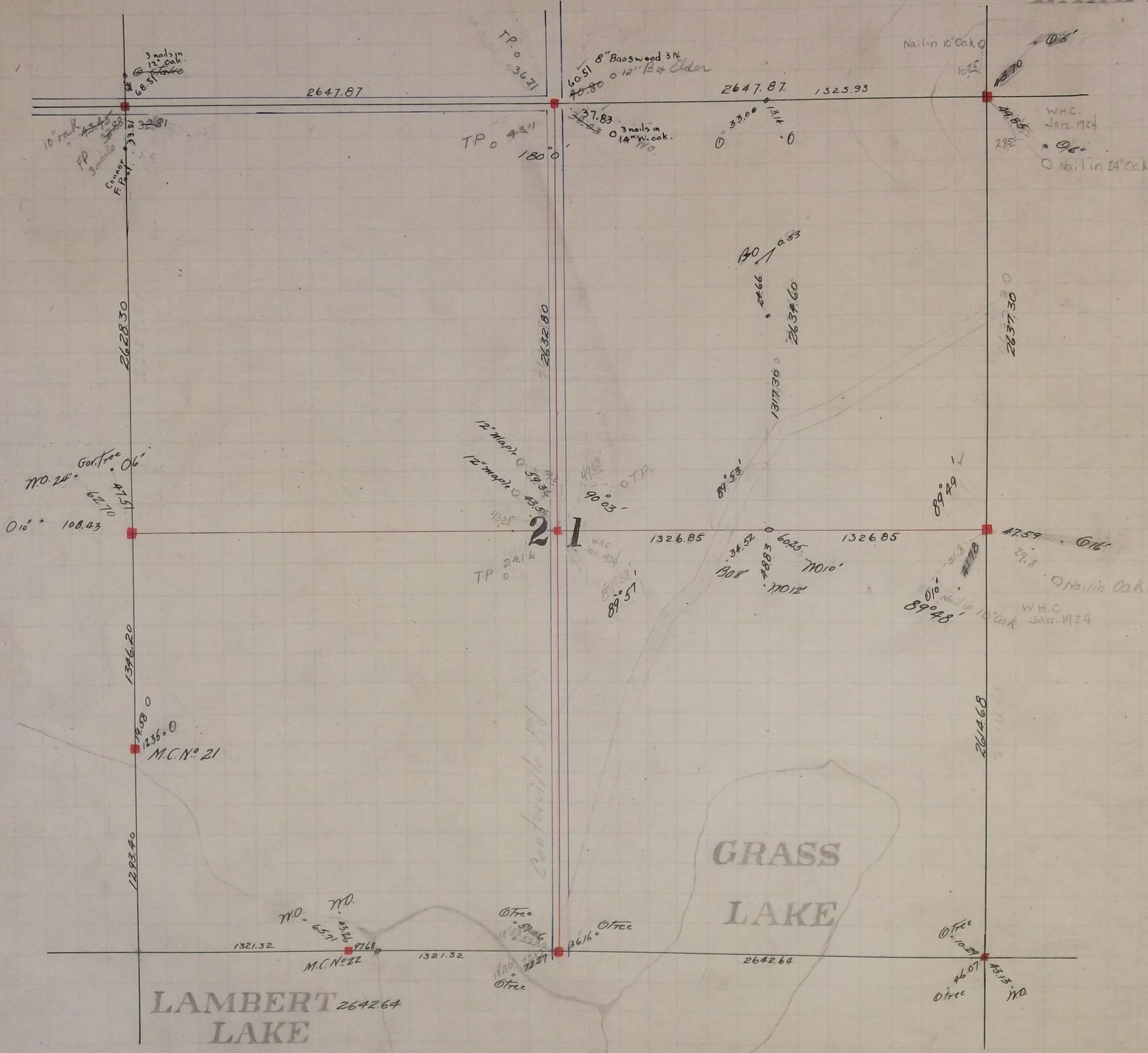


BIRCH LAKE



LAMBERT LAKE

GRASS LAKE

10" oak
3 nails in
12" oak
68.51
33.51
32.81
10" oak
FP
3 nails
Conner
F.P.

60.51 8" Basswood 3N.
48.80 12" Box Elder
37.83 3 nails in
14" W. oak.
110
TP 0 3671
TP 0 4511
180° 0'

Nail in 10" Oak
1055'
285'
24.85
Nail in 24" Oak
W.H.C.
Jan. 1924

Gov. tree
770.24
62.70
151.14
108.43
010°

12" Maple
59.34
12" Maple
43.54
49.25
90° 03'
TP 0 2416
W.H.C.
Jan. 1924
89° 57'

130° 05'
24.66
2634.60
1317.30

1326.85
34.52
6025
1326.85
89° 53'
308
4883
71010'
21011'
71012'

89° 49'
51.8
4118
47.59
29.8
Nail in 10" Oak
W.H.C.
Jan. 1924

1346.20
19.58
235.0
M.C. No. 21

1321.32
770.
65.71
91.68
M.C. No. 22
1321.32

0 tree
59.26
16.55
1180.
72.27
0 tree
3616°
0 tree

2642.64
0 tree
46.07
43.13
110.

2614.68

In Establishing the North East Corner of Section 21 found old stake at Section Corner
Government witness trees gone Retied it and set Monument Oct. 1896

Found old stake at $\frac{1}{4}$ corner between Sections 21 and 22 Government witness trees gone
Retied it and set Monument Oct. 1896

In Establishing the North West corner of Section 21 found old stake 33 ft North of
Section corner on line of old fence Government witness trees gone
Fixed corner and tied it November 19, 1897 Set Mont. May 11 - 1898

The $\frac{1}{4}$ corner between Sections 16 and 21 was fixed by running a straight line from corner to corner
and fixing $\frac{1}{4}$ corner at halfway Government witness trees gone Dec. 14 - 1897 Set Mont. May 19 - 98

Fixed the Centre.

In Establishing the $\frac{1}{4}$ Cor between Sections 21 and 20 Found Government witness tree
and old stake at $\frac{1}{4}$ corner Set Monument Aug. 15 - 1898

In Establishing the South West corner of Section 21 Ran straight line from Government corner N and S
Prorated and fixed Section corner in Lambert Lake Jan. 1900

In Establishing Meander corner No. 21 Ran straight line prorated and fixed Meander corner
Government trees gone Jan. 1900 Set Mont. May 3 - 1900

In Establishing Meander corner No. 22 Ran East on straight line to Government corner
Government distance 1 Government tree Jan. 1900

In Establishing the $\frac{1}{4}$ corner between Sections 21 and 28 Ran East on straight line
Government distance and fixed $\frac{1}{4}$ corner Government trees gone Jan. 1900 Set Mont. May 3 - 1900

In Establishing the S. E. corner of Section 21 Ran East on straight line Government
distance and fixed Section corner found remains of old Gov. slump Feb. 1900 Set Mont. June 1900

Fixed the Centre of Sec. 21 by Intersection and set Mont. Nov. 22 - 1900