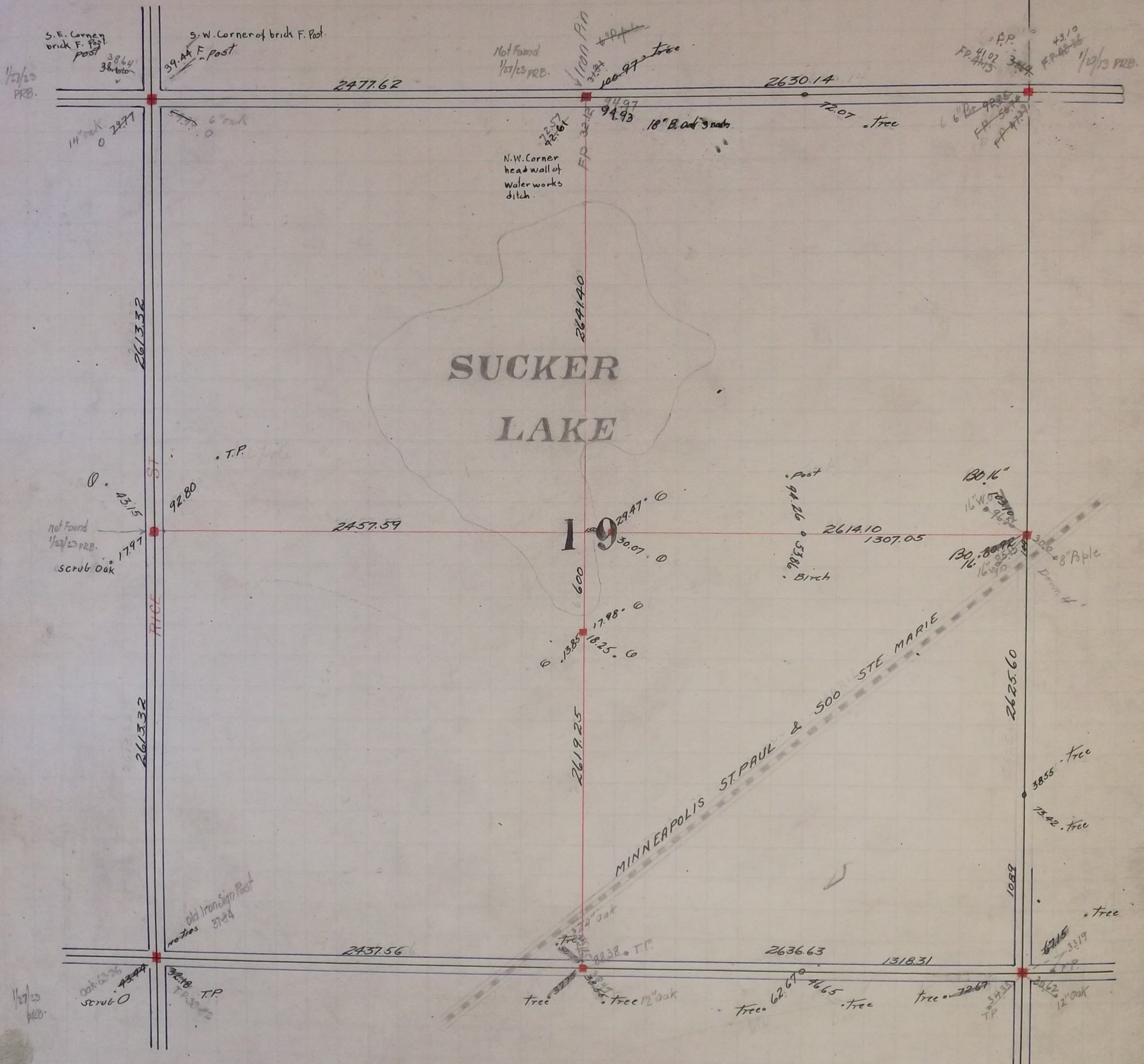


Newties taken 9/26/21



S.E. Corner
brick F. Post
post 3864
36.60
1/27/23 PRB.

S.W. Corner of brick F. Post.
39.44 F. Post

Not Found
1/27/23 PRB.

1100 PIN

F.P. 43.10
FP 41.07
FP 41.13
1/27/23 PRB.

2477.62

2630.14

14" oak 22.77

2613.32

N.W. Corner
head wall of
water works
ditch.

22.57
22.66
FP 32.12

18" B. oak 9 nats

72.07 tree

6" B. oak 9 nats
FP 47.29
FP 47.39

SUCKER
LAKE

T.P.

92.80

Not Found
1/27/23 PRB.
scrub Oak
17.97

2457.59

19

29.47
30.07

Post
94.26
53.86
Birch

2614.10
1307.05

130.16"

16" W. 96.50
96.50

130.80
16" W. 85.50
85.50

8" Poplar
Down H

RICE

2613.32

600

13.85
17.98
18.25

2619.25

MINNEAPOLIS ST. PAUL & 500 STE MARIE

2625.60

38.55 tree

73.42 tree

old Iron Sign Post
nails 37.84

2437.56

22.38 T.P.

2636.63

1318.31

tree

67.15
33.19
FP

1/27/23 PRB.

oak 63.76
scrub O

30.18 T.P.
FP 30.18

tree 37.75
38.18 tree 12" oak

tree 62.67
46.65 tree

tree 72.67
34.35 T.P.

30.62
12" oak

For North West Corner of Section 19 - see Section 18.

Apr - 1895

In Establishing the South West Corner of Section 19 in Vadnais Park Add. and fixed Section corner
Apr. - 1895 found old stake found Iron stakes at Block corners
Set Monument Government witness trees gone

In Establishing the $\frac{1}{4}$ corner between Section 19 T30 R22 and Section 24 T30 R23 Measured North from South West Corner of Section 19. to North West corner of said Section 5226.64 and fixed said $\frac{1}{4}$ corner half way Government witness trees gone June 1896 Set Monument.

In Establishing the $\frac{1}{4}$ corner between Sections 19 and 30 Prorated and fixed $\frac{1}{4}$ corner Government witness trees gone Set Mont. May 1898 March - 1898

In Establishing the South East corner of Section 19. Measured North from $\frac{1}{4}$ corner found between Sections 29 and 30 2636.50 which checked the line of fence running East Government witness trees gone fixed corner tied it and set Monument May-11-1896

In Establishing the $\frac{1}{4}$ corner between Sections 19 and 20 found both Government trees standing fixed corner May 11 - 1896 Set Monument Dec. 11 - 1899

In Establishing the $\frac{1}{4}$ corner between Sections 18 and 19 Found Government witness stump Fixed corner and tied it March. 1898 Set Mont. May 11 - 1898

In Establishing the North East corner of Section 19 Prorated and fixed Section corner half way Government witness trees gone March - 1898 Set Mont. May 11 - 1898

Fixed the center of Section 19 by Intersection