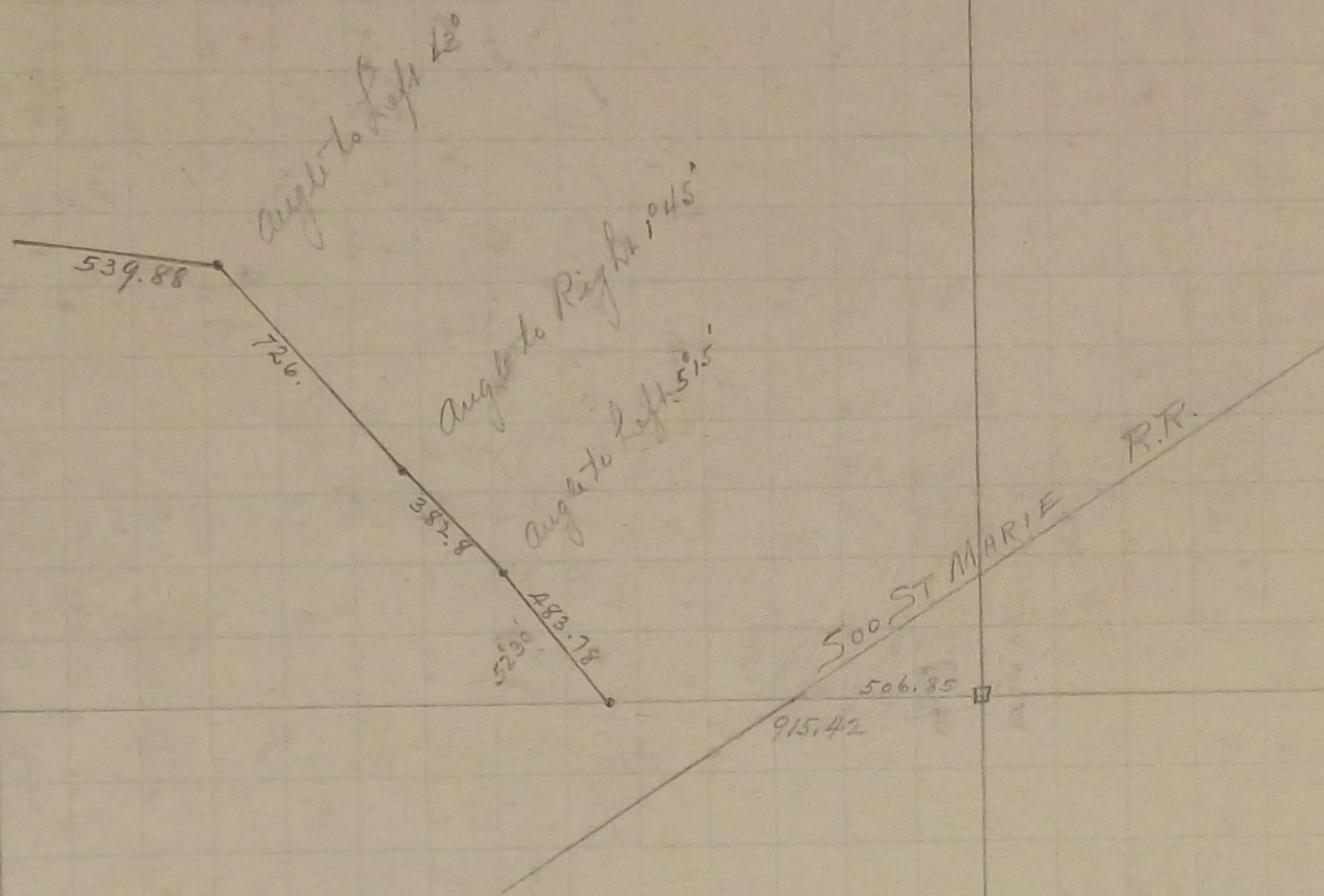




# SEC 16



For South East corner of Section. See Section 15 Oct. - 1896

In Establishing the  $\frac{1}{4}$  corner between Sections 16 and 17 found one old Government witness stump  
Fixed corner and tied it November 19 - 1897 Set Mont. June 30. - 1898

In Establishing the South West corner of Section 16 found old stake 33 ft North of  
Section corner on line of old fence Government witness trees gone  
Fixed corner and tied it Nov 19 - 1897 Set Mont. May 11 - 1898

The North East corner of Section 16 was fixed from two Government trees  
also found Iron stake at Section corner Retied it November 23 - 1897  
Set Mont. June 30 - 1898

The  $\frac{1}{4}$  corner between Sections 9 and 16 was fixed from old Government witness stump  
also found old stake at  $\frac{1}{4}$  corner Retied it Nov. 22 - 1897  
Set Mont. June 30 - 1898

The North West corner of Section 16 was fixed by measuring West from  $\frac{1}{4}$  corner between  
Sections 9 and 16 the Government distance. No Government trees  
Fixed corner and tied it December 8. - 1897 Set Mont. June 30. 1898

The  $\frac{1}{4}$  corner between Sections 15 and 16 was fixed by running a straight line from corner to corner  
and fixing  $\frac{1}{4}$  corner half way Government witness trees gone Dec 15 - 1897  
Set Mont. June 30. 1898

The  $\frac{1}{4}$  corner between Sections 16 and R1 was fixed by running straight line from corner to corner  
and fixed  $\frac{1}{4}$  corner half way Government witness trees gone Dec. 14 - 1897 Set Mont. May 11 - '98

Fixed the centre of Section 16 by Intersection Dec. 16 - 1897 Set Mont. June 30. 1898