

Gov. tree
 710.55.45
 52.98
 2830 Gov. tree

W.H.C.
 Jan. 1924

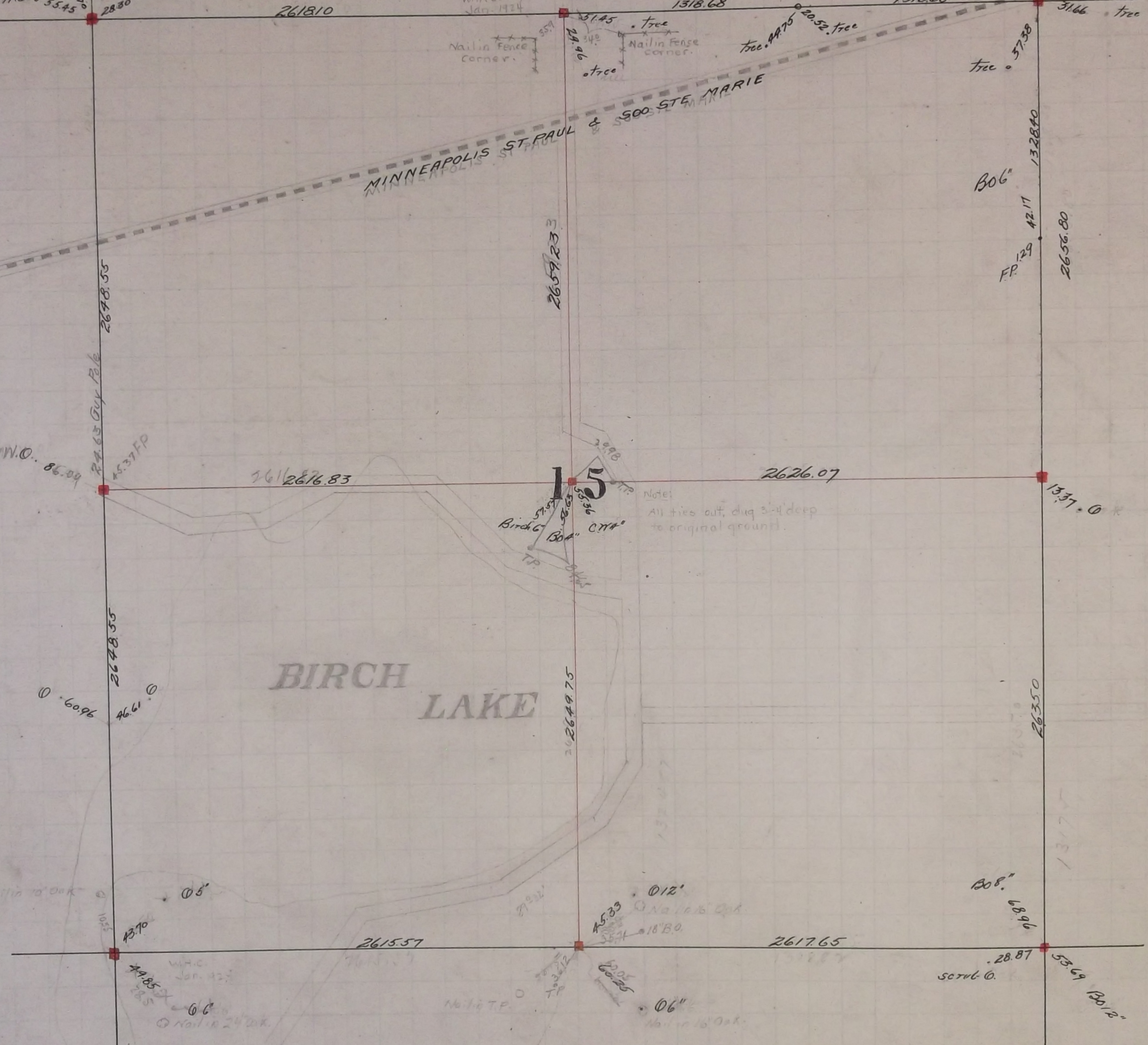
Nail in Fence
 corner.

Nail in Fence
 corner.

MINNEAPOLIS ST PAUL &
 500 STE MARIE

BIRCH
 LAKE

Note:
 All ties out, dug 3-4 deep
 to original ground.



In Establishing the South West Corner of Section 15 found old stake at Section Corner
Government witness trees gone Retied Corner and set Monument Oct. 1896

In Establishing the $\frac{1}{4}$ Corner between Section 15 and RR found old stake at $\frac{1}{4}$ Corner
and one Government witness stump Retied Corner and set Monument Oct. 1896

In Establishing the $\frac{1}{4}$ Corner between Sections 10 and 15 found old Boulder Monument at
 $\frac{1}{4}$ Corner and one Government witness tree and one stump Retied and set Monument Oct. 13, 1896

In Establishing the North East Corner of Section 15 Measured East from $\frac{1}{4}$ Corner between Sections
10 and 15 - 2637.50 to Section Corner and found old stake Government witness trees gone
Oct. 1896

For $\frac{1}{4}$ Corner between Sections 14 and 15 - see Section 14

The North West Corner of Section 15 was fixed from two old Government witness trees
also found Iron stake at Section Corner Retied it November 23, 1897
Set Monument June 30, - 1898

The $\frac{1}{4}$ Corner between Sections 15 and 16 was fixed by running a straight line from Corner to Corner
and fixing $\frac{1}{4}$ Corner at half way. No Government witness trees Dec. 15 - 1896
Set Monument June 30, - 1898

In Establishing the S.E. Corner of Section 15 found old stake at Section Corner
which was fixed when Government trees were standing fixed corner and tied it
Set Monument June, 1900

Fixed the Center of Section 15 by Intersection Mar. 6 - 1902
Set Mont. Dec. 16, - 1902