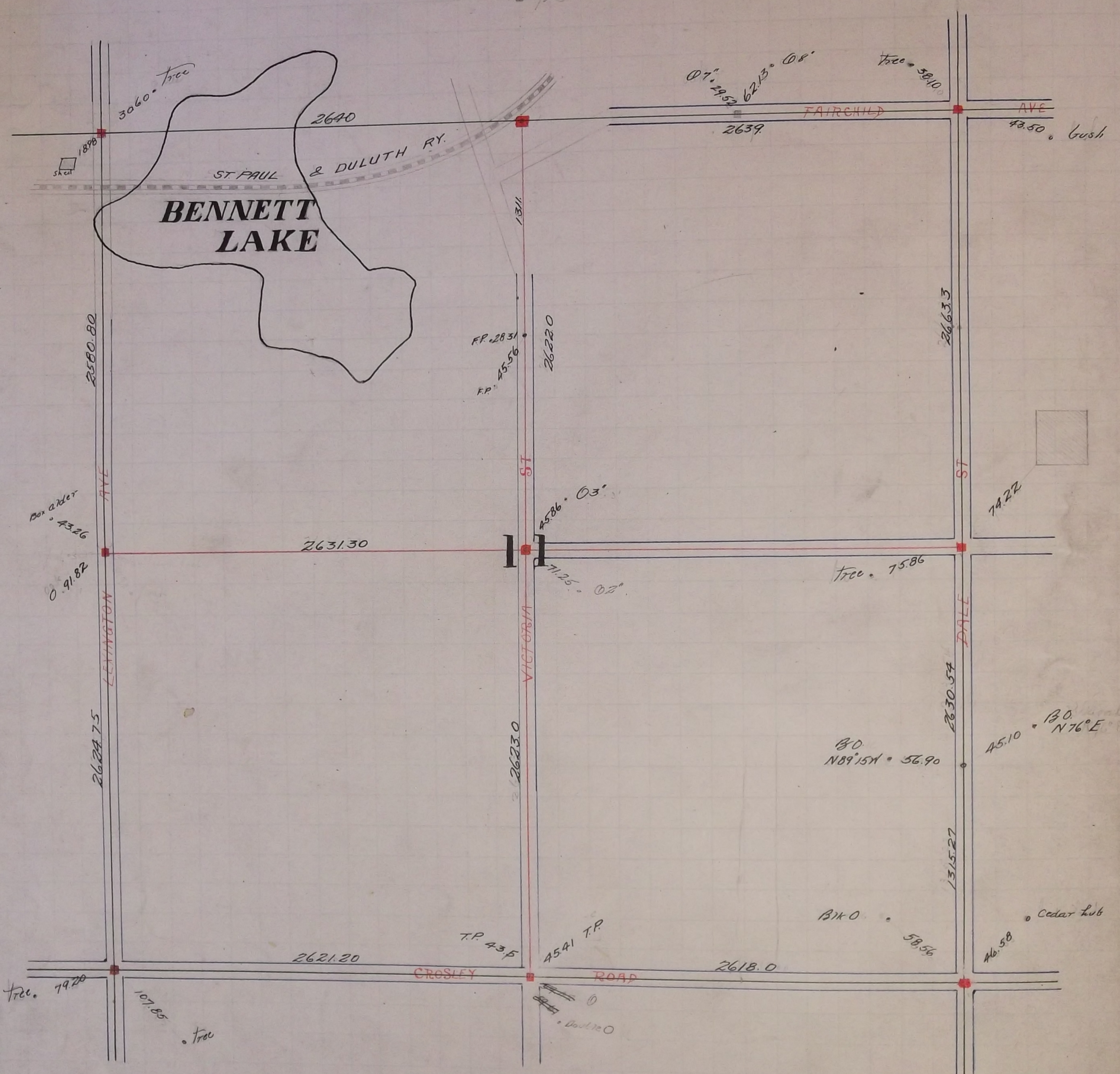


FP 116.15
FP 39.60
FP 11.11
1/4 bud



For South West corner of Section 11 - see page 33

The South East corner of Section 11 was Retied by Gates A. Johnson Jr County Surveyor 1895
This corner was fixed by Gates A. Johnson Sr while the old Government witness trees stood May 1895
Set Monument.

Replaced $\frac{1}{4}$ Section corner between Sections 11 and 12 this corner was fixed when witness trees were standing and Retied by Gates A. Johnson Jr County Surveyor in May 1895
Set Monument.

Set Monument at the North West corner of Section 11 in May 1896 (see Sec 10)

Found Monument at $\frac{1}{4}$ corner between Sections 11 and 14 Reset and tied it
in May 1897

The $\frac{1}{4}$ corner between Sections 2 and 11 was fixed by J. N. Armstrong Dec. 1896

The centre of Section 11 was fixed Oct 30 - 1897 Set Monument No. 10 - 1897

For North East corner of Section 11 (see Section 2)

The $\frac{1}{4}$ corner between Sections 10 and 11 was fixed in May 1897
Found old iron stake Government witness trees gone Set Monument