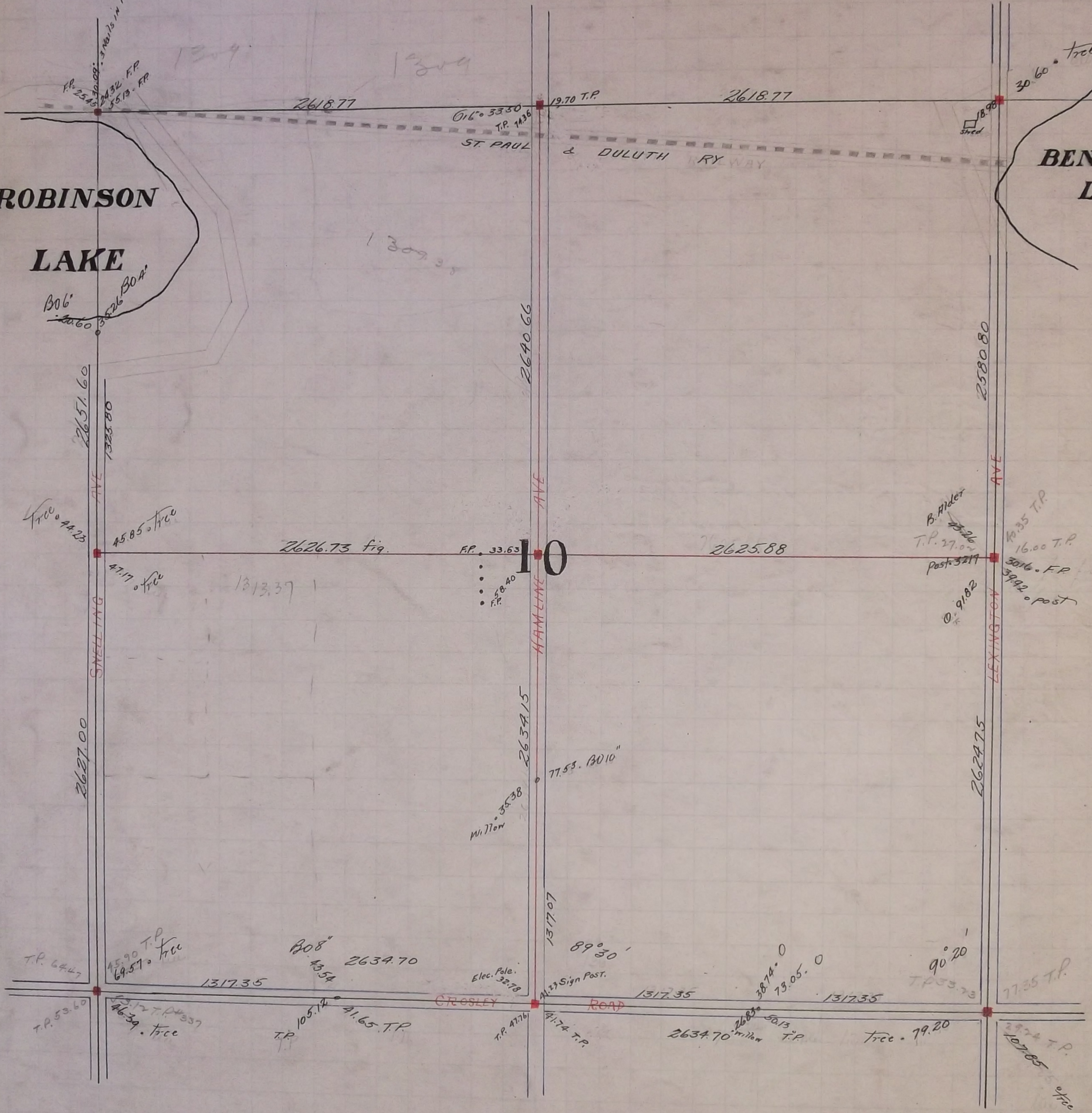


ROBINSON
LAKE

BENNETT
LAKE



FR 25.45
30.09
24.32 F.P.
35.13 F.P.

1309

2618.77

016° 33' 30"
T.P. 1436

19.70 T.P.

2618.77

Shed

30° 60' tree

ST. PAUL
& DULUTH RY WAY

1309.35

B06
30.60
35.26 B04

2651.60

1323.80

2640.66

2580.80

Tree 44.23

45.85 tree

2626.73 fig.

F.P. 33.63

10

2625.88

B. Alder
T.P. 27.07
Post 3217

10.35 T.P.
16.00 T.P.
30.16 F.P.
39.92 post

47.17 tree

1313.37

58.40
F.P.

0° 91.82

2627.00

SNELLING AVE

HAMLIN AVE

2634.15

77.53 B010"

2624.75

LEXINGTON AVE

35.38
M. Willow

1317.07

89° 30'

Sign Post

1317.35

3874.0
13.05.0

1317.35

90° 20'

T.P. 33.73

77.35 T.P.

T.P. 64.47

15.90 T.P.
69.57 tree

1317.35

B08
43.54
2634.70

Elec. Pole
32.78

CROSLY ROAD

T.P. 47.76

41.74 T.P.

2634.70
3874.0
50.13
T.P.

tree 79.20

29.24 T.P.
107.85 tree

T.P. 53.60

53.12 T.P.
46.39 tree

T.P. 105.12
41.65 T.P.

T.P. 47.76

41.74 T.P.

2634.70
3874.0
50.13
T.P.

tree 79.20

29.24 T.P.
107.85 tree

In Establishing the South East Corner of Sec 10 one Government witness tree standing and also found Iron stake at Section Corner and set Monument June 17 1896

The North West Corner of Section 10 was fixed Jan 7 - 1897 prolated
Government witness trees gone

The North East Corner of Section 10 Found Iron stake which had been there about 10 years
set Monument May 1896 no witness trees

The South West Corner of Section 10 was fixed Jan 5 1897 set Monument May - 1897
Fixed from old fence Government witness trees gone

The $\frac{1}{4}$ Corner between Sections 9 and 10 was fixed Jan 6 - 1897 set Monument May - 1897
Fixed from line of old fences Government witness trees gone.

The $\frac{1}{4}$ Corner between Sections 10 and 15 was fixed in May 1897
Found old Iron stake at $\frac{1}{4}$ Corner Government witness trees gone set Monument

The $\frac{1}{4}$ Corner between Sections 10 and 11 was fixed in May 1897
Found old Iron stake Government witness trees gone Set Monument

The $\frac{1}{4}$ Corner between Sections 3 and 10 was fixed from some of Gates A Johnson's
old notes when witness tree was standing Fixed Corner Jan 5 - 1898
Set Mont. May 9 - '98

Fixed the Centre of Section 10 by Intersection Jan 7 - 1898 Set Mont May 9 1898