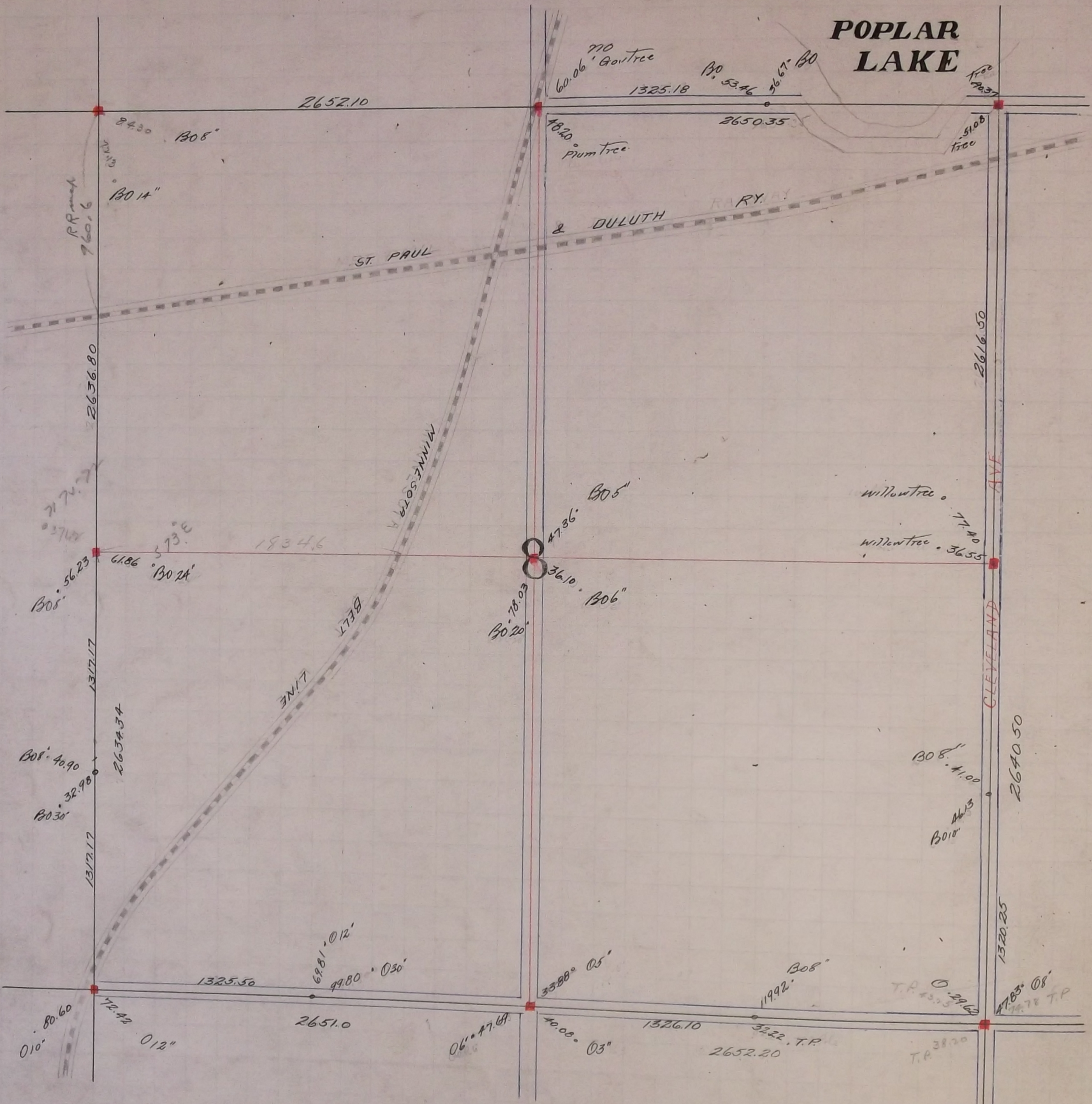


POPLAR LAKE



For North East corner of Section 8 found one old Government tree standing
fixed corner tied it and set Monument Aug 14 - 1896

Fixed $\frac{1}{4}$ corner between Sections 8 and 9 from line of old fence running West
Government witness trees gone Aug - 1896 Set Mont. May 9 - 1898

In Establishing the S.E. corner of Section 8 found old stake at Section corner
Government witness trees gone tied it and set monument Aug 17 - 1899

In Establishing the $\frac{1}{4}$ corner between Sections 8 and 17 found Government stump
fixed corner and tied it Dec 9 - 1898 Set Mont. Aug 1899

In Establishing the S.W. corner of Sec 8 found Iron stake at Section corner
Government trees gone tied it and set monument Aug 1899

In Establishing the $\frac{1}{4}$ corner between Sections 7 and 8 found both Government trees
and also monument set by Hennepin County tied it Sept 1899

Found Monument at N.W. corner of Section 8 set by Hennepin County Dec 21 - 1899

In Establishing the $\frac{1}{4}$ corner between Sections 5 and 8 found one Government tree
fixed corner and tied it Dec 20 - 1899 Set Mont. Apr 1900

Fixed the center of Section 8 by Intersection Jan 1900 Set mont. Apr 1900