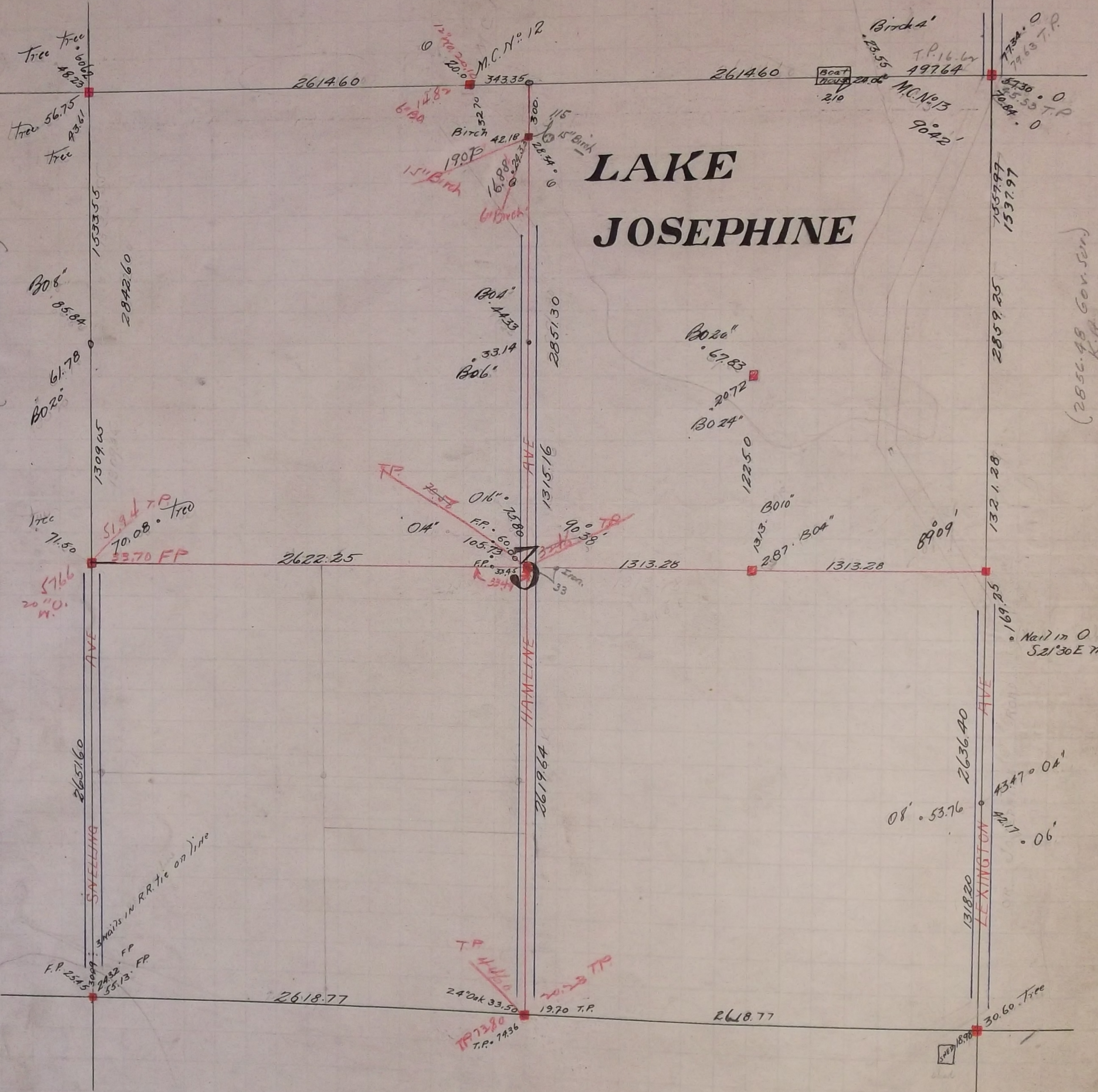


# LAKE JOSEPHINE

(286638 Gov. Sur.)

(285648 Gov. Sur.)  
K.A.



✓ In Establishing the North East Corner of Sec 3 see page 9

✓ In Establishing the South East Corner of Sec 3 see page 9

✓ In Establishing the North West Corner of Sec 3 found old stake no witness trees.  
set Monument in May 1896

✓ In Establishing the  $\frac{1}{4}$  Corner between sections 3 and 4 found old stake and two Government witness trees  
standing. tied corner and set Monument May 25 - 1896

✓ The South West corner of Section 3 was fixed Jan 7 - 1897

✓ The  $\frac{1}{4}$  corner between Sections 2 and 3 was fixed in Dec. 1896 Set Monument May 1897  
Fixed by J. H. Armstrong

✓ The  $\frac{1}{4}$  corner between Sections 3 and 10 was fixed from some old notes of Gates A Johnson  
when witness tree was standing Fixed corner and tied it Jan 5 - 1898 Set mont. May 9 - '98

✓ Fixed the centre of Section 3 by Intersection Jan 6 - 1898 Set Mont. May 9 - '98