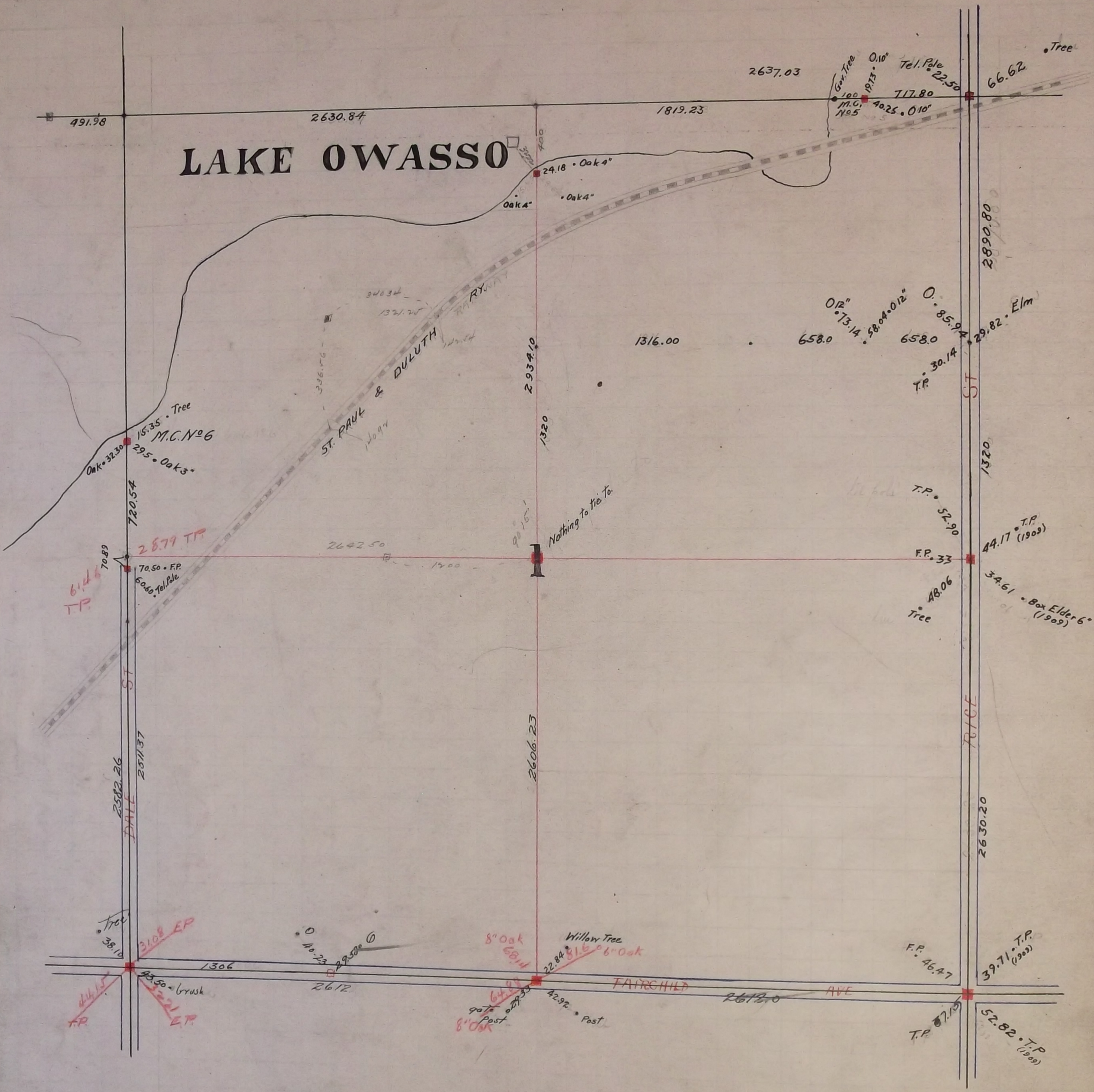


LAKE OWASSO



In Establishing the South East corner of Section 1 I found old Lot and Block corners on
Fauchier Ave and Rice St. from said stakes I fixed Section corner and set
Monument in May 1895 Government witness trees gone.

In Establishing the $\frac{1}{4}$ corner between Sections T29 R23 and Section 6 T29 R22
Measured North 2630.20 which checked the line of old fences running East and West
Government witness trees gone. Fixed corner, tied it and set Monument in June 1896

The $\frac{1}{4}$ corner between Sections 1 and 12 was fixed halfway between Rice and Dale St
and Monument set in May 1895 no Government trees

The South West corner of Section 1 in Section 2

The North East corner of Section 1 was fixed in June 1896 Set Monument.

Meander Corner No. 6 was fixed by J. H. Armstrong in December 1896 set Monument Aug 9 - 1897

Meander Corner No. 5 was fixed Jan 12 1898 Found Government witness tree
Set Mont. 100 ft E. Nov. 28 - 1900

The North West corner of Section was fixed Jan 11 - 1898 in Lake Owasso.

The $\frac{1}{4}$ corner on the North of Section 1 was fixed Jan 11 - 1898 in Lake Owasso
Set Mont. on shore 400 ft South Nov 28 - 1900

Fixed the centre of Section 1 by Intersection Jan 13 - 1898 nothing to tie to.
Set Monument June 22 - 1898.